

Datasheet for ABIN453634

## anti-EHHADH antibody (C-Term)



[Go to Product page](#)

### 1 Image

#### Overview

Quantity:	0.4 mL
Target:	EHHADH
Binding Specificity:	C-Term
Reactivity:	Human, Mouse
Host:	Rabbit
Clonality:	Polyclonal
Conjugate:	This EHHADH antibody is un-conjugated
Application:	Western Blotting (WB), Enzyme Immunoassay (EIA)

#### Product Details

Immunogen:	KLH conjugated synthetic peptide selected from the C-term region of human EHHADH
Specificity:	This antibody reacts to EHHADH.
Purification:	Affinity chromatography on Protein A

#### Target Details

Target:	EHHADH
Alternative Name:	EHHADH / PBE ( <a href="#">EHHADH Products</a> )
Background:	EHHADH is a bifunctional enzyme and is one of the four enzymes of the peroxisomal beta-oxidation pathway. The N-terminal region of the encoded protein contains enoyl-CoA hydratase activity while the C-terminal region contains 3-hydroxyacyl-CoA dehydrogenase activity. Synonyms: 2-trans-enoyl-CoA isomerase, 3-hydroxyacyl-CoA dehydrogenase, ECHD,

## Target Details

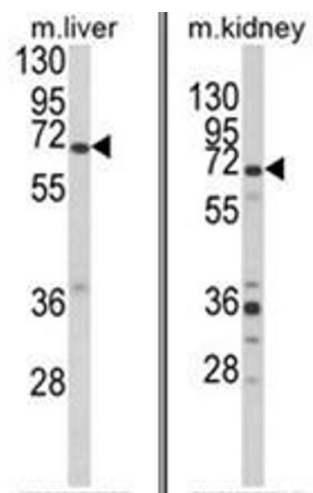
	Enoyl-CoA hydratase/3, PBFE, Peroxisomal bifunctional enzyme
Gene ID:	1962
NCBI Accession:	<a href="#">NP_001957</a>
UniProt:	<a href="#">Q08426</a>
Pathways:	<a href="#">Monocarboxylic Acid Catabolic Process</a>

## Application Details

Application Notes:	ELISA: 1/1,000. Western blotting: 1/100 - 1/500. Other applications not tested. Optimal dilutions are dependent on conditions and should be determined by the user.
Restrictions:	For Research Use only

## Handling

Format:	Liquid
Concentration:	0.25 mg/mL
Buffer:	PBS with 0.09 % (W/V) sodium azide
Preservative:	Sodium azide
Precaution of Use:	This product contains sodium azide: a POISONOUS AND HAZARDOUS SUBSTANCE which should be handled by trained staff only.
Handling Advice:	Avoid repeated freezing and thawing.
Storage:	4 °C/-20 °C
Storage Comment:	Store the antibody undiluted at 2-8 °C for one month or (in aliquots) at -20 °C for longer.



Western Blotting

**Image 1.** (LEFT) Western blot analysis of EHHADH Antibody (C-term) in mouse liver tissue lysates (35ug/lane). EHHADH (arrow) was detected using the purified Pab. (RIGHT) Western blot analysis of EHHADH Antibody (C-term) in mouse kidney tissue lysates (35ug/lane). EHHADH (arrow) was detected using the purified Pab.