

Datasheet for ABIN453671

anti-Gasdermin B antibody (Middle Region)[Go to Product page](#)**1** Image

Overview

Quantity:	0.4 mL
Target:	Gasdermin B (GSDMB)
Binding Specificity:	Middle Region
Reactivity:	Human
Host:	Rabbit
Clonality:	Polyclonal
Conjugate:	This Gasdermin B antibody is un-conjugated
Application:	Western Blotting (WB), Enzyme Immunoassay (EIA)

Product Details

Immunogen:	KLH conjugated synthetic peptide selected from the Center region of human GSDMB
Specificity:	This antibody reacts to GSDMB.
Purification:	Affinity chromatography on Protein A

Target Details

Target:	Gasdermin B (GSDMB)
Alternative Name:	Gasdermin-B (GSDMB Products)
Background:	GSDMB is a protein with 3' exonuclease activity. Enzymes with this activity are involved in DNA replication, repair, and recombination. Similarity to an E. coli protein suggests that this enzyme may be a subunit of DNA polymerase III, which does not have intrinsic exonuclease activity. Synonyms: GSDMB, GSDML, Gasdermin-like protein, PP4052, PRO2521

Target Details

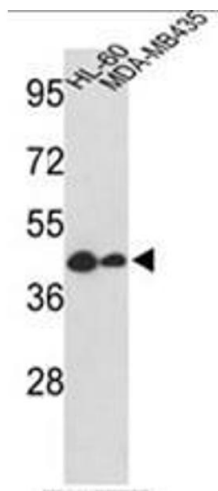
Gene ID:	55876
NCBI Accession:	NP_001035936
UniProt:	Q8TAX9

Application Details

Application Notes:	ELISA: 1/1,000. Western blotting: 1/100 - 1/500. Other applications not tested. Optimal dilutions are dependent on conditions and should be determined by the user.
Restrictions:	For Research Use only

Handling

Format:	Liquid
Concentration:	0.25 mg/mL
Buffer:	PBS with 0.09 % (W/V) sodium azide
Preservative:	Sodium azide
Precaution of Use:	This product contains sodium azide: a POISONOUS AND HAZARDOUS SUBSTANCE which should be handled by trained staff only.
Handling Advice:	Avoid repeated freezing and thawing.
Storage:	4 °C/-20 °C
Storage Comment:	Store the antibody undiluted at 2-8 °C for one month or (in aliquots) at -20 °C for longer.



Western Blotting

Image 1. Western blot analysis of GSDMB Antibody (Center) in HL-60, MDA-MB435 cell line lysates (35ug/lane). GSDMB (arrow) was detected using the purified Pab.