

Datasheet for ABIN453679
anti-HLA B7 antibody (N-Term)[Go to Product page](#)

1 Image

Overview

Quantity:	0.4 mL
Target:	HLA B7
Binding Specificity:	N-Term
Reactivity:	Human
Host:	Rabbit
Clonality:	Polyclonal
Conjugate:	This HLA B7 antibody is un-conjugated
Application:	Western Blotting (WB), Enzyme Immunoassay (EIA)

Product Details

Immunogen:	KLH conjugated synthetic peptide selected from the N-terminal region of human HLA-B
Specificity:	This antibody reacts to HLA-B.
Purification:	Affinity chromatography on Protein A

Target Details

Target:	HLA B7
Abstract:	HLA B7 Products
Background:	HLA-B is involved in the presentation of foreign antigens to the immune system.Synonyms: B-7 alpha chain, HLA class I histocompatibility antigen, HLAB, MHC class I antigen B7
Gene ID:	3106

Target Details

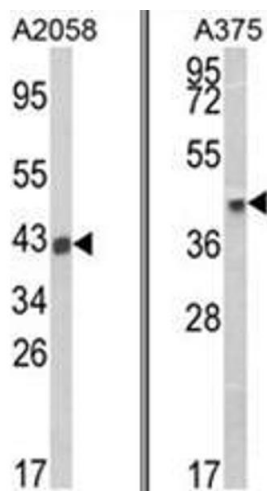
NCBI Accession:	NP_005505
UniProt:	P01889
Pathways:	Human Leukocyte Antigen (HLA) in Adaptive Immune Response

Application Details

Application Notes:	ELISA: 1/1,000. Western blotting: 1/100 - 1/500. Other applications not tested. Optimal dilutions are dependent on conditions and should be determined by the user.
Restrictions:	For Research Use only

Handling

Format:	Liquid
Concentration:	0.25 mg/mL
Buffer:	PBS with 0.09 % (W/V) sodium azide
Preservative:	Sodium azide
Precaution of Use:	This product contains sodium azide: a POISONOUS AND HAZARDOUS SUBSTANCE which should be handled by trained staff only.
Handling Advice:	Avoid repeated freezing and thawing.
Storage:	4 °C/-20 °C
Storage Comment:	Store the antibody undiluted at 2-8 °C for one month or (in aliquots) at -20 °C for longer.



Western Blotting

Image 1. (LEFT) Western blot analysis of HLA-B Antibody (N-term) in A2058 cell line lysates (35ug/lane). HLA-B (arrow) was detected using the purified Pab. (RIGHT) Western blot analysis of HLA-B Antibody (N-term) in A375 cell line lysates (35ug/lane). HLA-B (arrow) was detected using the purified Pab.