

Datasheet for ABIN453698
anti-IgH antibody (C-Term)[Go to Product page](#)

1 Image

Overview

Quantity:	0.4 mL
Target:	IgH
Binding Specificity:	C-Term
Reactivity:	Human
Host:	Rabbit
Clonality:	Polyclonal
Application:	Western Blotting (WB), Enzyme Immunoassay (EIA)

Product Details

Immunogen:	KLH conjugated synthetic peptide selected from the C-term region of human IGH
Purification:	Affinity chromatography on Protein A

Target Details

Target:	IgH
Alternative Name:	IGH (IgH Products)
Gene ID:	9606
UniProt:	Q6GMX6

Application Details

Application Notes:	ELISA: 1/1,000. Western blotting: 1/100 - 1/500.
--------------------	--

Application Details

Other applications not tested.

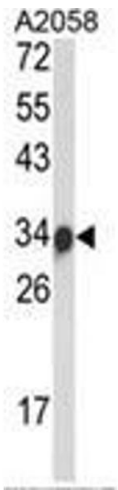
Optimal dilutions are dependent on conditions and should be determined by the user.

Restrictions: For Research Use only

Handling

Format:	Liquid
Concentration:	0.25 mg/mL
Buffer:	PBS with 0.09 % (W/V) sodium azide
Preservative:	Sodium azide
Precaution of Use:	This product contains sodium azide: a POISONOUS AND HAZARDOUS SUBSTANCE which should be handled by trained staff only.
Handling Advice:	Avoid repeated freezing and thawing.
Storage:	4 °C/-20 °C
Storage Comment:	Store the antibody undiluted at 2-8 °C for one month or (in aliquots) at -20 °C for longer.

Images



Western Blotting

Image 1. Western blot analysis of IGH Antibody (C-Term) in A2058 cell line lysates (35ug/lane). IGH (arrow) was detected using the purified Pab.