

Datasheet for ABIN453703

anti-IL1RAPL2 antibody (Middle Region)[Go to Product page](#)**1** Image

Overview

Quantity:	0.4 mL
Target:	IL1RAPL2
Binding Specificity:	Middle Region
Reactivity:	Human
Host:	Rabbit
Clonality:	Polyclonal
Conjugate:	This IL1RAPL2 antibody is un-conjugated
Application:	Western Blotting (WB), Enzyme Immunoassay (EIA)

Product Details

Immunogen:	KLH conjugated synthetic peptide selected from the Center region of human IL1RAPL2
Specificity:	This antibody reacts to IL1RAPL2.
Purification:	Affinity chromatography on Protein A

Target Details

Target:	IL1RAPL2
Alternative Name:	IL1RAPL2 / IL1R9 (IL1RAPL2 Products)
Background:	IL1RAPL2 is a member of the interleukin 1 receptor family. This protein is similar to the interleukin 1 accessory proteins, and is most closely related to interleukin 1 receptor accessory protein-like 1 (IL1RAPL1).Synonyms: IL-1 receptor accessory protein-like 2, IL-1R9, IL-1RAPL2, IL1RAPL-2-related protein, Interleukin-1 receptor 9, Three immunoglobulin domain-containing

Target Details

IL-1 receptor-related 1, X-linked interleukin-1 receptor accessory protein-like 2

Gene ID: 26280

NCBI Accession: [NP_059112](#)

UniProt: [Q9NP60](#)

Application Details

Application Notes: ELISA: 1/1,000. Western blotting: 1/100 - 1/500.
Other applications not tested.
Optimal dilutions are dependent on conditions and should be determined by the user.

Restrictions: For Research Use only

Handling

Format: Liquid

Concentration: 0.25 mg/mL

Buffer: PBS with 0.09 % (W/V) sodium azide

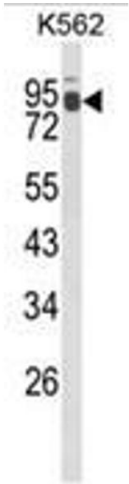
Preservative: Sodium azide

Precaution of Use: This product contains sodium azide: a POISONOUS AND HAZARDOUS SUBSTANCE which should be handled by trained staff only.

Handling Advice: Avoid repeated freezing and thawing.

Storage: 4 °C/-20 °C

Storage Comment: Store the antibody undiluted at 2-8 °C for one month or (in aliquots) at -20 °C for longer.



Western Blotting

Image 1. Western blot analysis of IL1RAPL2 Antibody (Center) in K562 cell line lysates (35ug/lane). IL1RAPL2 (arrow) was detected using the purified Pab.