



[Go to Product page](#)

Datasheet for ABIN453711

anti-ITGBL1 antibody (Middle Region)

1 Image

Overview

Quantity:	0.4 mL
Target:	ITGBL1
Binding Specificity:	Middle Region
Reactivity:	Human
Host:	Rabbit
Clonality:	Polyclonal
Application:	Western Blotting (WB), Enzyme Immunoassay (EIA)

Product Details

Immunogen:	KLH conjugated synthetic peptide selected from the Center region of human ITGBL1
Specificity:	This antibody reacts to ITGBL1.
Purification:	Affinity chromatography on Protein A

Target Details

Target:	ITGBL1
Alternative Name:	ITGBL1 (ITGBL1 Products)
Background:	Osteoblast specific cysteine-rich protein (OSCP) is integrin, β -like 1 (with EGF-like repeat domains). Synonyms: Integrin beta-like protein 1, OSCP, Osteoblast-specific cysteine-rich protein, TIED, Ten integrin EGF-like repeat domain-containing protein
Gene ID:	9358

Target Details

NCBI Accession: [NP_004782](#)

UniProt: [O95965](#)

Application Details

Application Notes: ELISA: 1/1,000. Western blotting: 1/100 - 1/500.
Other applications not tested.
Optimal dilutions are dependent on conditions and should be determined by the user.

Restrictions: For Research Use only

Handling

Format: Liquid

Concentration: 0.25 mg/mL

Buffer: PBS with 0.09 % (W/V) sodium azide

Preservative: Sodium azide

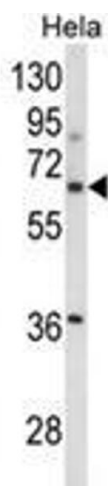
Precaution of Use: This product contains sodium azide: a POISONOUS AND HAZARDOUS SUBSTANCE which should be handled by trained staff only.

Handling Advice: Avoid repeated freezing and thawing.

Storage: 4 °C/-20 °C

Storage Comment: Store the antibody undiluted at 2-8 °C for one month or (in aliquots) at -20 °C for longer.

Images



Western Blotting

Image 1. Western blot analysis of ITGBL1 Antibody (Center) in HeLa cell line lysates (35ug/lane). ITGBL1 (arrow) was detected using the purified Pab.