

Datasheet for ABIN453719
anti-KLRC2 antibody (N-Term)



[Go to Product page](#)

1 Image

Overview

Quantity:	0.4 mL
Target:	KLRC2
Binding Specificity:	N-Term
Reactivity:	Human
Host:	Rabbit
Clonality:	Polyclonal
Conjugate:	This KLRC2 antibody is un-conjugated
Application:	Western Blotting (WB), Enzyme Immunoassay (EIA)

Product Details

Immunogen:	KLH conjugated synthetic peptide selected from the N-term region of human KLRC2
Specificity:	This antibody reacts to KLRC2 / CD159c.
Purification:	Affinity chromatography on Protein A

Target Details

Target:	KLRC2
Alternative Name:	KLRC2 / CD159c (KLRC2 Products)
Background:	KLRC2 plays a role as a receptor for the recognition of MHC class I HLA-E molecules by NK cells and some cytotoxic T-cells. Synonyms: CD159 antigen-like family member C, CD159c, KLRC2, NK cell receptor C, NKG2-C type II integral membrane protein, NKG2-C-activating NK receptor, NKG2C

Target Details

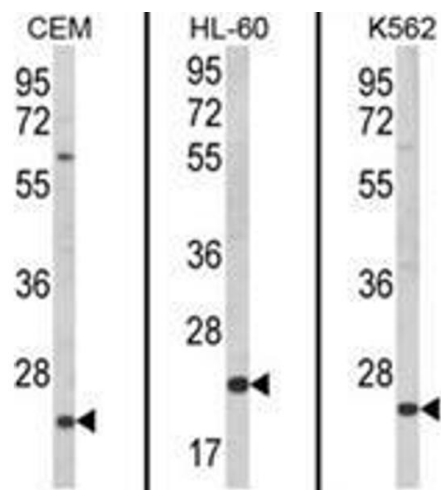
Gene ID:	3822
NCBI Accession:	NP_002251
UniProt:	P26717

Application Details

Application Notes:	ELISA: 1/1,000. Western blotting: 1/100 - 1/500. Other applications not tested. Optimal dilutions are dependent on conditions and should be determined by the user.
Restrictions:	For Research Use only

Handling

Format:	Liquid
Concentration:	0.25 mg/mL
Buffer:	PBS with 0.09 % (W/V) sodium azide
Preservative:	Sodium azide
Precaution of Use:	This product contains sodium azide: a POISONOUS AND HAZARDOUS SUBSTANCE which should be handled by trained staff only.
Handling Advice:	Avoid repeated freezing and thawing.
Storage:	4 °C/-20 °C
Storage Comment:	Store the antibody undiluted at 2-8 °C for one month or (in aliquots) at -20 °C for longer.



Western Blotting

Image 1. Western blot analysis of KLRC2 Antibody (N-term) from left to right in CEM, HL-60, K562 cell line lysates (35ug/lane). KLRC2 (arrow) was detected using the purified Pab.