

Datasheet for ABIN453755

anti-NCF1C antibody (C-Term)[Go to Product page](#)**1** Image

Overview

Quantity:	0.4 mL
Target:	NCF1C
Binding Specificity:	C-Term
Reactivity:	Human
Host:	Rabbit
Clonality:	Polyclonal
Conjugate:	This NCF1C antibody is un-conjugated
Application:	Western Blotting (WB), Enzyme Immunoassay (EIA)

Product Details

Immunogen:	KLH conjugated synthetic peptide selected from the C-terminal region of human NCF1C
Purification:	Affinity chromatography on Protein A

Target Details

Target:	NCF1C
Alternative Name:	NCF1C (NCF1C Products)
Background:	NCF1C may be required for activation of the latent NADPH oxidase. Synonyms: NCF-1C, Putative neutrophil cytosol factor 1C, SH3 and PX domain-containing protein 1C, SH3PXD1C
Gene ID:	9606
UniProt:	A8MVU1

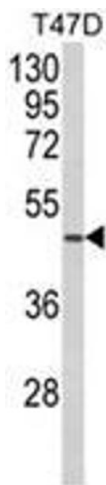
Application Details

Application Notes:	ELISA: 1/1,000. Western blotting: 1/100 - 1/500. Other applications not tested. Optimal dilutions are dependent on conditions and should be determined by the user.
Restrictions:	For Research Use only

Handling

Format:	Liquid
Concentration:	0.25 mg/mL
Buffer:	PBS with 0.09 % (W/V) sodium azide
Preservative:	Sodium azide
Precaution of Use:	This product contains sodium azide: a POISONOUS AND HAZARDOUS SUBSTANCE which should be handled by trained staff only.
Handling Advice:	Avoid repeated freezing and thawing.
Storage:	4 °C/-20 °C
Storage Comment:	Store the antibody undiluted at 2-8 °C for one month or (in aliquots) at -20 °C for longer.

Images



Western Blotting

Image 1. Western blot analysis of NCF1C Antibody (C-term) in T47D cell line lysates (35ug/lane). NCF1C (arrow) was detected using the purified Pab.