

Datasheet for ABIN453785
anti-PON3 antibody (N-Term)



[Go to Product page](#)

1 Image

Overview

Quantity:	0.4 mL
Target:	PON3
Binding Specificity:	N-Term
Reactivity:	Human
Host:	Rabbit
Clonality:	Polyclonal
Conjugate:	This PON3 antibody is un-conjugated
Application:	Western Blotting (WB), Enzyme Immunoassay (EIA)

Product Details

Immunogen:	KLH conjugated synthetic peptide selected from the N-terminal region of human PON3
Specificity:	This antibody reacts to PON3.
Purification:	Affinity chromatography on Protein A

Target Details

Target:	PON3
Alternative Name:	PON3 (PON3 Products)
Background:	PON3 is secreted into the bloodstream and associates with high-density lipoprotein (HDL). The protein also rapidly hydrolyzes lactones and can inhibit the oxidation of low-density lipoprotein (LDL), a function that is believed to slow the initiation and progression of atherosclerosis. Synonyms: PON 3, PON-3, Serum paraoxonase/lactonase 3

Target Details

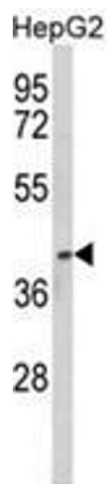
Gene ID:	5446
NCBI Accession:	NP_000931
UniProt:	Q15166
Pathways:	Monocarboxylic Acid Catabolic Process

Application Details

Application Notes:	ELISA: 1/1,000. Western blotting: 1/100 - 1/500. Other applications not tested. Optimal dilutions are dependent on conditions and should be determined by the user.
Restrictions:	For Research Use only

Handling

Format:	Liquid
Concentration:	0.50 mg/mL
Buffer:	PBS with 0.09 % (W/V) sodium azide
Preservative:	Sodium azide
Precaution of Use:	This product contains sodium azide: a POISONOUS AND HAZARDOUS SUBSTANCE which should be handled by trained staff only.
Handling Advice:	Avoid repeated freezing and thawing.
Storage:	4 °C/-20 °C
Storage Comment:	Store the antibody undiluted at 2-8 °C for one month or (in aliquots) at -20 °C for longer.



Western Blotting

Image 1. Western blot analysis of PON3 Antibody (N-term) in HepG2 cell line lysates (35ug/lane). PON3 (arrow) was detected using the purified Pab.