



Datasheet for ABIN453788
anti-PPP2R2B antibody (AA 110-139)



[Go to Product page](#)

4 Images

Overview

Quantity:	0.4 mL
Target:	PPP2R2B
Binding Specificity:	AA 110-139
Reactivity:	Human
Host:	Rabbit
Clonality:	Polyclonal
Application:	Western Blotting (WB), Immunohistochemistry (Paraffin-embedded Sections) (IHC (p)), Flow Cytometry (FACS), Immunofluorescence (IF), Enzyme Immunoassay (EIA)

Product Details

Immunogen:	KLH conjugated synthetic peptide between 110~139 amino acids from the Center region of Human PPP2R2B. Genename: PPP2R2B
Specificity:	This antibody recognizes PPP2R2B.
Cross-Reactivity (Details):	Species reactivity (tested):Human.
Purification:	Protein A Chromatography followed by peptide Affinity purification.

Target Details

Target:	PPP2R2B
Alternative Name:	PPP2R2B (PPP2R2B Products)
Background:	PPP2R2B belongs to the phosphatase 2 regulatory subunit B family. Protein phosphatase 2 is one of the four major Ser/Thr phosphatases, and it is implicated in the negative control of cell

Target Details

growth and division. It consists of a common heteromeric core enzyme, which is composed of a catalytic subunit and a constant regulatory subunit, that associates with a variety of regulatory subunits. The B regulatory subunit might modulate substrate selectivity and catalytic activity. This protein is a beta isoform of the regulatory subunit B55 subfamily. Synonyms: B55-beta isoform, PP2A subunit B B-beta isoform, PR55-beta isoform, R2-beta isoform, Serine/threonine-protein phosphatase 2A 55 kDa regulatory subunit B beta isoform, protein phosphatase 2A 55 kDa regulatory subunit B beta

Molecular Weight: 51710 Da

Gene ID: 5521

NCBI Accession: [NP_001120853](#)

UniProt: [Q00005](#)

Pathways: [PI3K-Akt Signaling](#), [Mitotic G1-G1/S Phases](#), [Hepatitis C](#)

Application Details

Application Notes: ELISA: 1/1,000. Western blotting: 1/100-1/500. Immunohistochemistry: 1/50-1/100.
Immunofluorescence: 1/10-1/50. Flow Cytometry: 1/10-1/50.
Other applications not tested.
Optimal dilutions are dependent on conditions and should be determined by the user.

Restrictions: For Research Use only

Handling

Format: Liquid

Concentration: 0.25 mg/mL

Buffer: PBS with 0.09 % (W/V) Sodium Azide as preservative.

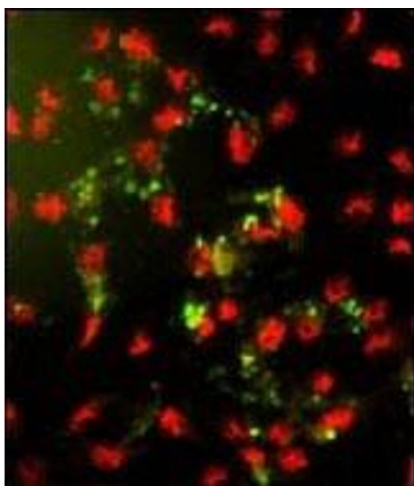
Preservative: Sodium azide

Precaution of Use: This product contains sodium azide: a POISONOUS AND HAZARDOUS SUBSTANCE which should be handled by trained staff only.

Handling Advice: Avoid repeated freezing and thawing.

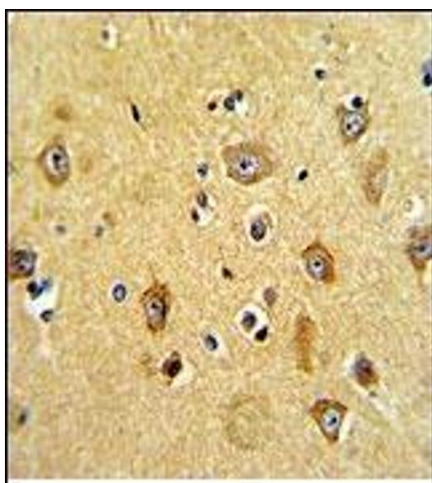
Storage: 4 °C/-20 °C

Storage Comment: Store the antibody undiluted at 2-8 °C for one month or (in aliquots) at -20 °C for longer.



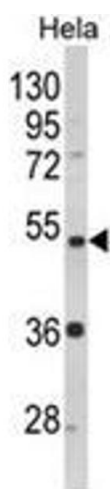
Immunofluorescence

Image 1. Immunofluorescence analysis of AP18157PU-N PPP2R2B Antibody (Center) with hela cells. 0.025 mg/ml primary antibody was followed by FITC-conjugated Goat anti-Rabbit IgG (whole molecule). FITC emits green fluorescence. Red counterstaining is PI.



Immunohistochemistry (Paraffin-embedded Sections)

Image 2. AP18157PU-N PPP2R2B Antibody staining of Formalin-fixed and paraffin-embedded human brain tissue using peroxidase-conjugated secondary antibody, followed by DAB staining.



Western Blotting

Image 3. Western blot analysis of PPP2R2B Antibody (Center) in HeLa cell line lysates (35ug/lane). PPP2R2B (arrow) was detected using the purified Pab.

Please check the [product details page](#) for more images. Overall 4 images are available for ABIN453788.