

Datasheet for ABIN453796

anti-PTAR1 antibody (Middle Region)



[Go to Product page](#)

1 Image

Overview

Quantity:	0.4 mL
Target:	PTAR1
Binding Specificity:	Middle Region
Reactivity:	Human
Host:	Rabbit
Clonality:	Polyclonal
Application:	Western Blotting (WB), Enzyme Immunoassay (EIA)

Product Details

Immunogen:	KLH conjugated synthetic peptide selected from the Center region of human PTAR1
Specificity:	This antibody reacts to PTAR1.
Purification:	Affinity chromatography on Protein A

Target Details

Target:	PTAR1
Alternative Name:	PTAR1 (PTAR1 Products)
Background:	Synonyms: Protein prenyltransferase alpha subunit repeat-containing protein 1
Gene ID:	375743
NCBI Accession:	NP_001093136
UniProt:	Q7Z6K3

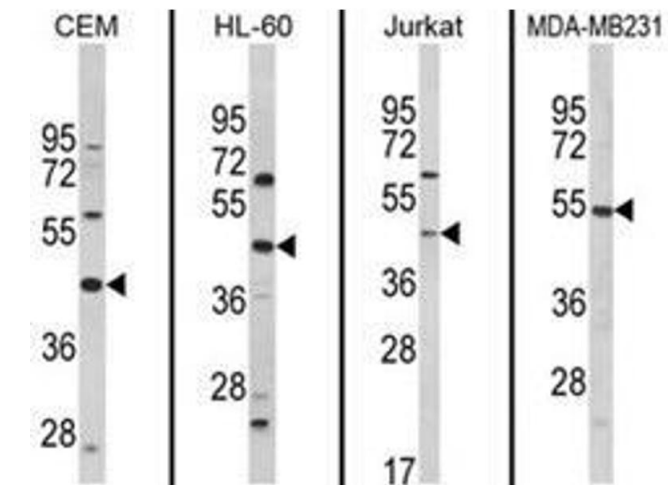
Application Details

Application Notes:	ELISA: 1/1,000. Western blotting: 1/100 - 1/500. Other applications not tested. Optimal dilutions are dependent on conditions and should be determined by the user.
Restrictions:	For Research Use only

Handling

Format:	Liquid
Concentration:	0.25 mg/mL
Buffer:	PBS with 0.09 % (W/V) sodium azide
Preservative:	Sodium azide
Precaution of Use:	This product contains sodium azide: a POISONOUS AND HAZARDOUS SUBSTANCE which should be handled by trained staff only.
Handling Advice:	Avoid repeated freezing and thawing.
Storage:	4 °C/-20 °C
Storage Comment:	Store the antibody undiluted at 2-8 °C for one month or (in aliquots) at -20 °C for longer.

Images



Western Blotting

Image 1. Western blot analysis of PTAR1 Antibody (Center) from left to right in CEM, HL-60, Jurkat, MDA-MB231 cell line lysates (35ug/lane). PTAR1 (arrow) was detected using the purified Pab.