

Datasheet for ABIN453811  
**anti-RGS1 antibody (N-Term)**



[Go to Product page](#)

1 Image

## Overview

Quantity:	0.4 mL
Target:	RGS1
Binding Specificity:	N-Term
Reactivity:	Human
Host:	Rabbit
Clonality:	Polyclonal
Conjugate:	This RGS1 antibody is un-conjugated
Application:	Western Blotting (WB), Enzyme Immunoassay (EIA)

## Product Details

Immunogen:	KLH conjugated synthetic peptide selected from the N-term region of human RGS1
Specificity:	This antibody reacts to RGS1.
Purification:	Affinity chromatography on Protein A

## Target Details

Target:	RGS1
Alternative Name:	RGS1 ( <a href="#">RGS1 Products</a> )
Background:	RGS1 is a member of the regulator of G-protein signalling family. This protein is located on the cytosolic side of the plasma membrane and contains a conserved, 120 amino acid motif called the RGS domain. The protein attenuates the signalling activity of G-proteins by binding to activated, GTP-bound G alpha subunits and acting as a GTPase activating protein (GAP),

## Target Details

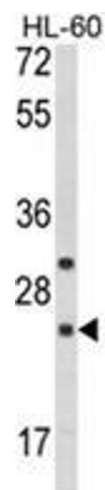
	increasing the rate of conversion of the GTP to GDP. This hydrolysis allows the G alpha subunits to bind G beta/gamma subunit heterodimers, forming inactive G-protein heterotrimers, thereby terminating the signal.Synonyms: 1R20, B-cell activation protein BL34, BL34, Early response protein 1R20, IER1, Regulator of G-protein signaling 1
Gene ID:	5996
NCBI Accession:	<a href="#">NP_002913</a>
UniProt:	<a href="#">Q08116</a>
Pathways:	<a href="#">MAPK Signaling</a> , <a href="#">Myometrial Relaxation and Contraction</a> , <a href="#">Regulation of G-Protein Coupled Receptor Protein Signaling</a> , <a href="#">CXCR4-mediated Signaling Events</a>

## Application Details

Application Notes:	ELISA: 1/1,000. Western blotting: 1/100 - 1/500. Other applications not tested. Optimal dilutions are dependent on conditions and should be determined by the user.
Restrictions:	For Research Use only

## Handling

Format:	Liquid
Concentration:	0.25 mg/mL
Buffer:	PBS with 0.09 % (W/V) sodium azide
Preservative:	Sodium azide
Precaution of Use:	This product contains sodium azide: a POISONOUS AND HAZARDOUS SUBSTANCE which should be handled by trained staff only.
Handling Advice:	Avoid repeated freezing and thawing.
Storage:	4 °C/-20 °C
Storage Comment:	Store the antibody undiluted at 2-8 °C for one month or (in aliquots) at -20 °C for longer.



Western Blotting

**Image 1.** Western blot analysis of RGS1 Antibody (N-term) in HL-60 cell line lysates (35ug/lane). RGS1 (arrow) was detected using the purified Pab.