



Datasheet for ABIN453825
anti-SRSF2 antibody (Middle Region)



[Go to Product page](#)

1 Image

Overview

Quantity:	0.4 mL
Target:	SRSF2
Binding Specificity:	AA 83-113, Middle Region
Reactivity:	Human
Host:	Rabbit
Clonality:	Polyclonal
Conjugate:	This SRSF2 antibody is un-conjugated
Application:	Western Blotting (WB), Enzyme Immunoassay (EIA)

Product Details

Immunogen:	KLH conjugated synthetic peptide selected from aa 83-113 from the Center region of human SFRS2
Specificity:	This antibody reacts to SFRS2.
Purification:	Saturated Ammonium Sulfate (SAS) precipitation

Target Details

Target:	SRSF2
Alternative Name:	SFRS2 / SC-35 (SRSF2 Products)
Background:	SFRS2 is necessary for the splicing of pre-mRNA. The protein is required for formation of the earliest ATP-dependent splicing complex and interacts with spliceosomal components bound to both the 5'- and 3'-splice sites during spliceosome assembly. It also is required for ATP-

Target Details

dependent interactions of both U1 and U2 snRNPs with pre-mRNA. And it interacts with other spliceosomal components, via the RS domains, to form a bridge between the 5'- and 3'-splice site binding components, U1 snRNP and U2AF. It binds to purine-rich RNA sequences, either 5'-AGSAGAGTA-3' (S=C or G) or 5'-GTTTCGAGTA-3' and can bind to beta-globin mRNA and commit it to the splicing pathway. Synonyms: Nuclear Speckle Marker, PR264, Splicing component 35 kDa, Splicing factor SC35, Splicing factor arginine/serine-rich 2

Gene ID: 6427

NCBI Accession: [NP_003007](#)

UniProt: [Q01130](#)

Application Details

Application Notes: ELISA: 1/1,000. Western blotting: 1/50 - 1/100.
Other applications not tested.
Optimal dilutions are dependent on conditions and should be determined by the user.

Restrictions: For Research Use only

Handling

Format: Liquid

Concentration: 0.25 mg/mL

Buffer: PBS with 0.09 % (W/V) sodium azide

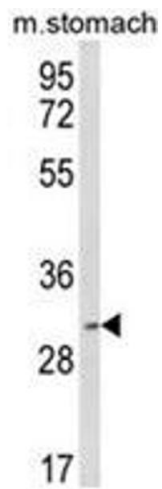
Preservative: Sodium azide

Precaution of Use: This product contains sodium azide: a POISONOUS AND HAZARDOUS SUBSTANCE which should be handled by trained staff only.

Handling Advice: Avoid repeated freezing and thawing.

Storage: 4 °C/-20 °C

Storage Comment: Store the antibody undiluted at 2-8 °C for one month or (in aliquots) at -20 °C for longer.



Western Blotting

Image 1. Western blot analysis of SFRS2 Antibody (Center) in mouse stomach tissue lysates (35ug/lane). SFRS2 (arrow) was detected using the purified Pab.