

Datasheet for ABIN453837

anti-SORCS1 antibody (N-Term)[Go to Product page](#)**1** Image

Overview

Quantity:	0.4 mL
Target:	SORCS1
Binding Specificity:	N-Term
Reactivity:	Human
Host:	Rabbit
Clonality:	Polyclonal
Conjugate:	This SORCS1 antibody is un-conjugated
Application:	Enzyme Immunoassay (EIA), Flow Cytometry (FACS), Western Blotting (WB)

Product Details

Immunogen:	KLH conjugated synthetic peptide selected from the N-term region of human SORCS1
Specificity:	This antibody reacts to SORCS1.
Purification:	Affinity chromatography on Protein A

Target Details

Target:	SORCS1
Alternative Name:	SORCS / SORCS1
Background:	SORCS1 is one family member of vacuolar protein sorting 10 (VPS10) domain-containing receptor proteins. The VPS10 domain name comes from the yeast carboxypeptidase Y sorting receptor Vps10 protein. Synonyms: VPS10 domain-containing receptor SorCS1

Target Details

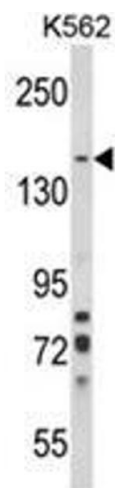
Gene ID:	114815
NCBI Accession:	NP_001013049
UniProt:	Q8WY21

Application Details

Application Notes:	ELISA: 1/1,000. Western blotting: 1/100 - 1/500. Other applications not tested. Optimal dilutions are dependent on conditions and should be determined by the user.
Restrictions:	For Research Use only

Handling

Format:	Liquid
Concentration:	0.25 mg/mL
Buffer:	PBS with 0.09 % (W/V) sodium azide
Preservative:	Sodium azide
Precaution of Use:	This product contains sodium azide: a POISONOUS AND HAZARDOUS SUBSTANCE which should be handled by trained staff only.
Handling Advice:	Avoid repeated freezing and thawing.
Storage:	4 °C/-20 °C
Storage Comment:	Store the antibody undiluted at 2-8 °C for one month or (in aliquots) at -20 °C for longer.



Western Blotting

Image 1. Western blot analysis of SORCS1 Antibody (N-term) in K562 cell line lysates (35ug/lane). SORCS1 (arrow) was detected using the purified Pab.