

Datasheet for ABIN453856

**anti-Protein Tob1 (TOB1) (AA 61-91), (N-Term) antibody**[Go to Product page](#)**3** Images

## Overview

Quantity:	0.4 mL
Target:	Protein Tob1 (TOB1)
Binding Specificity:	AA 61-91, N-Term
Reactivity:	Human, Mouse
Host:	Rabbit
Clonality:	Polyclonal
Application:	Western Blotting (WB), Immunohistochemistry (Paraffin-embedded Sections) (IHC (p)), Flow Cytometry (FACS), Enzyme Immunoassay (EIA)

## Product Details

Immunogen:	KLH conjugated synthetic peptide between 61~91 amino acids from the N-terminal region of Human TOB1 Gene name: TOB1
Isotype:	Ig Fraction
Specificity:	This antibody recognizes TOB1 (N-term).
Purification:	Affinity Chromatography on Protein A

## Target Details

Target:	Protein Tob1 (TOB1)
Alternative Name:	TOB1 ( <a href="#">TOB1 Products</a> )
Background:	TOB1 is a member of the tob/btg1 family of anti-proliferative proteins that have the potential to regulate cell growth. When exogenously expressed, this protein suppresses cell growth in tissue

## Target Details

culture. The protein undergoes phosphorylation by a serine/threonine kinase, 90 kDa ribosomal S6 kinase. Interactions of this protein with the v-erb-b2 erythroblastic leukemia viral oncogene homolog 2 gene product p185 interferes with growth suppression. This protein inhibits T cell proliferation and transcription of cytokines and cyclins. The protein interacts with both mothers against decapentaplegic Drosophila homolog 2 and 4 to enhance their DNA binding activity. This interaction inhibits interleukin 2 transcription in T cells. Synonyms: TOB, TROB1, Transducer of erbB-2 1

Gene ID: 10140

NCBI Accession: [NP\\_005740](#)

UniProt: [P50616](#)

## Application Details

Application Notes: ELISA: 1/1,000. Western blotting: 1/100 - 1/500.  
Other applications not tested.  
Optimal dilutions are dependent on conditions and should be determined by the user.

Restrictions: For Research Use only

## Handling

Format: Liquid

Concentration: 0.25 mg/mL

Buffer: PBS with 0.09 % (W/V) Sodium Azide as preservative

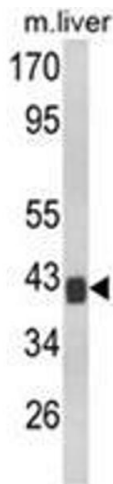
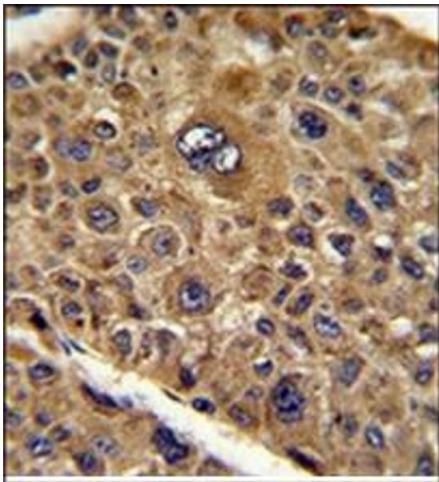
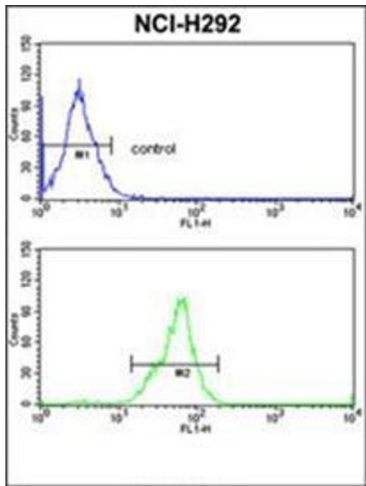
Preservative: Sodium azide

Precaution of Use: This product contains sodium azide: a POISONOUS AND HAZARDOUS SUBSTANCE which should be handled by trained staff only.

Handling Advice: Avoid repeated freezing and thawing.

Storage: 4 °C/-20 °C

Storage Comment: Store the antibody undiluted at 2-8 °C for one month or (in aliquots) at -20 °C for longer.



### Flow Cytometry

**Image 1.** Flow Cytometric analysis of NCI-H292 cells using TOB1 Antibody (N-term) Cat.-No AP18225PU-N Flow (Bottom histogram) compared to a negative control cell (top histogram). FITC-conjugated Goat-anti-Rabbit secondary antibodies were used for the analysis.

### Immunohistochemistry (Paraffin-embedded Sections)

**Image 2.** Formalin-Fixed, Paraffin-Eembedded Human hepatocarcinoma reacted with TOB1 Antibody (N-term), which was peroxidase-conjugated to the secondary antibody, followed by DAB staining. This data demonstrates the use of this antibody for immunohistochemistry; clinical relevance has not been evaluated.

### Western Blotting

**Image 3.** Western blot analysis of TOB1 Antibody (N-term) Cat.-No AP18225PU-N in Mouse liver tissue lysates (35ug/lane). TOB1 (arrow) was detected using the purified Pab.