

Datasheet for ABIN453871
anti-VTI1A antibody (C-Term)



[Go to Product page](#)

1 Image

Overview

Quantity:	0.4 mL
Target:	VTI1A
Binding Specificity:	C-Term
Reactivity:	Human, Mouse
Host:	Rabbit
Clonality:	Polyclonal
Conjugate:	This VTI1A antibody is un-conjugated
Application:	Western Blotting (WB), Enzyme Immunoassay (EIA)

Product Details

Immunogen:	KLH conjugated synthetic peptide selected from the C-terminal region of human VTI1A
Specificity:	This antibody reacts to VTI1A.
Purification:	Affinity chromatography on Protein A

Target Details

Target:	VTI1A
Alternative Name:	VTI1A (VTI1A Products)
Background:	V-SNARE that mediates vesicle transport pathways through interactions with t-SNAREs on the target membrane. These interactions are proposed to mediate aspects of the specificity of vesicle trafficking and to promote fusion of the lipid bilayers. It may be concerned with increased secretion of cytokines associated with cellular senescence.Synonyms: Vesicle

Target Details

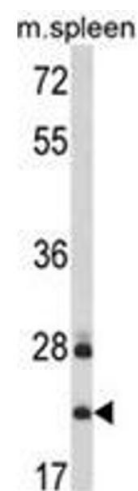
	transport through interaction with t-SNAREs homolog 1A, Vesicle transport v-SNARE protein Vti1-like 2, Vti1-rp2
Gene ID:	143187
NCBI Accession:	NP_660207
UniProt:	Q96AJ9

Application Details

Application Notes:	ELISA: 1/1,000. Western blotting: 1/100 - 1/500. Other applications not tested. Optimal dilutions are dependent on conditions and should be determined by the user.
Restrictions:	For Research Use only

Handling

Format:	Liquid
Concentration:	0.25 mg/mL
Buffer:	PBS with 0.09 % (W/V) sodium azide
Preservative:	Sodium azide
Precaution of Use:	This product contains sodium azide: a POISONOUS AND HAZARDOUS SUBSTANCE which should be handled by trained staff only.
Handling Advice:	Avoid repeated freezing and thawing.
Storage:	4 °C/-20 °C
Storage Comment:	Store the antibody undiluted at 2-8 °C for one month or (in aliquots) at -20 °C for longer.



Western Blotting

Image 1. Western blot analysis of VT11A Antibody (C-term) in mouse spleen tissue lysates (35ug/lane). VT11A (arrow) was detected using the purified Pab.