

Datasheet for ABIN453873

**anti-WDSUB1 antibody (Middle Region)**[Go to Product page](#)**1** Image

## Overview

Quantity:	0.4 mL
Target:	WDSUB1
Binding Specificity:	Middle Region
Reactivity:	Human
Host:	Rabbit
Clonality:	Polyclonal
Conjugate:	This WDSUB1 antibody is un-conjugated
Application:	Western Blotting (WB), Enzyme Immunoassay (EIA)

## Product Details

Immunogen:	AP8816c
Specificity:	This antibody reacts to WDSUB1.
Purification:	Affinity chromatography on Protein A

## Target Details

Target:	WDSUB1
Alternative Name:	WDSUB1 ( <a href="#">WDSUB1 Products</a> )
Background:	WD repeat-containing proteins are those that contain 4 or more copies of the WD-repeat (tryptophan-aspartate repeat), a sequence motif approximately 31 amino acids long, that encodes a structural repeat. There are two isoforms of WDSUB1. Synonyms: SAM and U-box domain-containing protein 1, WD repeat, WDSAM1

Target Details

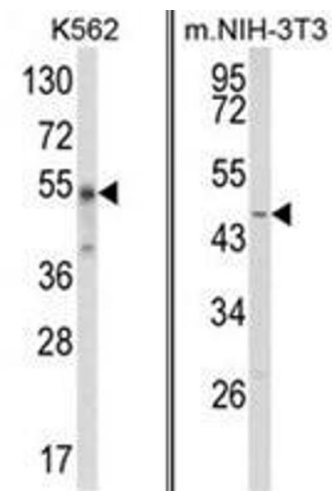
Gene ID:	151525
NCBI Accession:	<a href="#">NP_001121684</a>
UniProt:	<a href="#">Q8N9V3</a>

Application Details

Application Notes:	ELISA: 1/1,000. Western blotting: 1/100 - 1/500. Other applications not tested. Optimal dilutions are dependent on conditions and should be determined by the user.
Restrictions:	For Research Use only

Handling

Format:	Liquid
Concentration:	0.25 mg/mL
Buffer:	PBS with 0.09 % (W/V) sodium azide
Preservative:	Sodium azide
Precaution of Use:	This product contains sodium azide: a POISONOUS AND HAZARDOUS SUBSTANCE which should be handled by trained staff only.
Handling Advice:	Avoid repeated freezing and thawing.
Storage:	4 °C/-20 °C
Storage Comment:	Store the antibody undiluted at 2-8 °C for one month or (in aliquots) at -20 °C for longer.



Western Blotting

**Image 1.** (LEFT) Western blot analysis of WDSUB1 Antibody (Center) in K562 cell line lysates (35ug/lane). WDSUB1 (arrow) was detected using the purified Pab. (RIGHT) Western blot analysis of WDSUB1 Antibody (Center) in NIH-3T3 cell line lysates (35ug/lane). WDSUB1 (arrow) was detected using the purified Pab.