

Datasheet for ABIN453883
anti-ZYG11A antibody (N-Term)[Go to Product page](#)

1 Image

Overview

| | |
|----------------------|---|
| Quantity: | 0.4 mL |
| Target: | ZYG11A |
| Binding Specificity: | N-Term |
| Reactivity: | Human |
| Host: | Rabbit |
| Clonality: | Polyclonal |
| Application: | Western Blotting (WB), Enzyme Immunoassay (EIA) |

Product Details

| | |
|---------------|--|
| Immunogen: | KLH conjugated synthetic peptide selected from the N-terminal region of human ZYG11A |
| Specificity: | This antibody reacts to ZYG11A. |
| Purification: | Affinity chromatography on Protein A |

Target Details

| | |
|-------------------|--|
| Target: | ZYG11A |
| Alternative Name: | ZYG11A (ZYG11A Products) |
| Background: | ZYG11A probably acts as target recruitment subunit in an E3 ubiquitin ligase complex ZYGA-CUL2-elongin BC (By similarity). |
| Gene ID: | 440590 |
| NCBI Accession: | NP_001004339 |

Target Details

UniProt: [Q6WRX3](#)

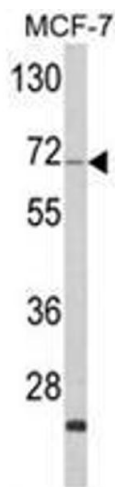
Application Details

| | |
|--------------------|---|
| Application Notes: | ELISA: 1/1,000. Western blotting: 1/100 - 1/500. Other applications not tested. Optimal dilutions are dependent on conditions and should be determined by the user. |
| Restrictions: | For Research Use only |

Handling

| | |
|--------------------|--|
| Format: | Liquid |
| Concentration: | 0.25 mg/mL |
| Buffer: | PBS with 0.09 % (W/V) sodium azide |
| Preservative: | Sodium azide |
| Precaution of Use: | This product contains sodium azide: a POISONOUS AND HAZARDOUS SUBSTANCE which should be handled by trained staff only. |
| Handling Advice: | Avoid repeated freezing and thawing. |
| Storage: | 4 °C/-20 °C |
| Storage Comment: | Store the antibody undiluted at 2-8 °C for one month or (in aliquots) at -20 °C for longer. |

Images



Western Blotting

Image 1. Western blot analysis of ZYG11A Antibody (N-term) in MCF-7 cell line lysates (35ug/lane). ZYG11A (arrow) was detected using the purified Pab.