

## Datasheet for ABIN457294

### Thaumatococcus ELISA Kit

[Go to Product page](#)

#### 1 Image

#### Overview

Quantity:	96 tests
Target:	Thaumatococcus
Method Type:	Sandwich ELISA
Minimum Detection Limit:	80 ng/mL
Application:	ELISA

#### Product Details

Sample Type:	Food
Analytical Method:	Quantitative
Detection Method:	Colorimetric
Cross-Reactivity (Details):	Cross reactivity: Acesulfame <0,1% Aspartame <0,1% Cyclamate <0,1% Saccharin <0,1% Saccharose <0,1%
Characteristics:	The determination of Thaumatococcus is carried out as direct sandwich ELISA.

#### Target Details

Target:	Thaumatococcus
Background:	The thaumatococcus is a mixture of proteins isolated from the katemfe fruit (Thaumatococcus daniellii Bennett). Some of the proteins in the thaumatococcus family are natural sweeteners roughly 2000 times more potent than sugar. Thaumatococcus has been approved as a sweetener in the European Union (E957), Israel, and Japan. In the United States, it is a Generally Recognized as Safe flavoring agent (FEMA GRAS 3732). The Thaumatococcus-ELISA is designed for the quantitative

Target Details

determination of Thaumatin in complex samples.

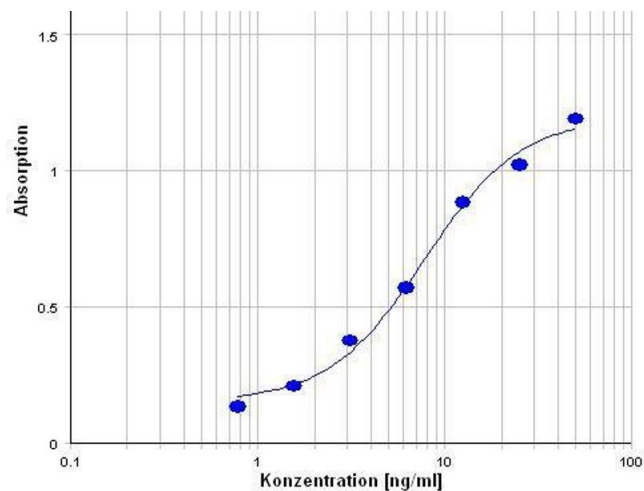
Application Details

Plate:	Pre-coated
Protocol:	An antibody specific for Thaumatin has been pre-coated onto a microplate. Standards and samples are pipetted into the wells and any Thaumatin present is bound.. After washing away any unbound substances, an enzyme-linked antibody is added. Following a wash, a substrate solution is added to the wells and color develops in proportion to the amount of antibody conjugate. The absorption at 450 nm is proportional to the Thaumatin concentration
Assay Procedure:	Incubation of samples/standards: 100 µL/well 2 h Wash Incubation of detection antibody: 100 µL/well 2 h Wash Substrate incubation: 100 µL/well 15 min Add stop solution: 100 µL/well Read at 450 nm
Assay Precision:	Intraassay precision (CV): (n=12) at 6 ng/ml: 6,2%
Restrictions:	For Research Use only

Handling

Storage:	4 °C
----------	------

Images



**ELISA**

**Image 1.** Typical standard curve (Y-axis: Absorption, X-axis: Concentration(µg/ml))