



[Go to Product page](#)

Datasheet for ABIN457306

anti-pan Keratin antibody (APC)

3 Images

4 Publications

Overview

Quantity:	0.1 mg
Target:	pan Keratin (panKRT)
Reactivity:	Mammalian
Host:	Mouse
Clonality:	Monoclonal
Conjugate:	This pan Keratin antibody is conjugated to APC
Application:	Flow Cytometry (FACS)

Product Details

Immunogen:	Keratin-enriched preparation from human epidermoid carcinoma cell line A431.
Clone:	C-11
Isotype:	IgG1
Specificity:	The antibody C-11 reacts with cytokeratin peptides 4, 5, 6, 8, 10, 13, 18. Cytokeratins are members of intermediate filaments subfamily intracellular proteins represented in epithelial tissues.
Cross-Reactivity (Details):	Mammalian
Purification:	Purified antibody is conjugated with activated allophycocyanin (APC) under optimum conditions and unconjugated antibody and free fluorochrome are removed by size-exclusion chromatography.

Target Details

Target:	pan Keratin (panKRT)
Alternative Name:	Cytokeratin (Pan-reactive) (panKRT Products)
Background:	Cytokeratins are a subfamily of intermediate filaments and are characterized by remarkable biochemical diversity. They are represented in epithelial tissues by at least 20 different polypeptides, molecular weight between 40 kDa and 68 kDa. The individual cytokeratin polypeptides are designated 1 to 20 and divided into the type I (acidic cytokeratins 9-20) and type II (basic to neutral cytokeratins 1-8) families.,cytokeratin, CYK, CK, KRT

Application Details

Application Notes:	Flow cytometry: Recommended dilution: 1 µg/mL. Intracellular staining.
Comment:	The purified antibody is conjugated with cross-linked Allophycocyanin (APC) under optimum conditions. The conjugate is purified by size-exclusion chromatography.
Restrictions:	For Research Use only

Handling

Concentration:	0.1 mg/mL
Buffer:	Stabilizing phosphate buffered saline (PBS), pH 7.4, 15 mM sodium azide
Preservative:	Sodium azide
Precaution of Use:	This product contains Sodium azide: a POISONOUS AND HAZARDOUS SUBSTANCE which should be handled by trained staff only.
Handling Advice:	Do not freeze. Avoid prolonged exposure to light.
Storage:	4 °C
Storage Comment:	Store at 2-8°C. Protect from prolonged exposure to light. Do not freeze.

Publications

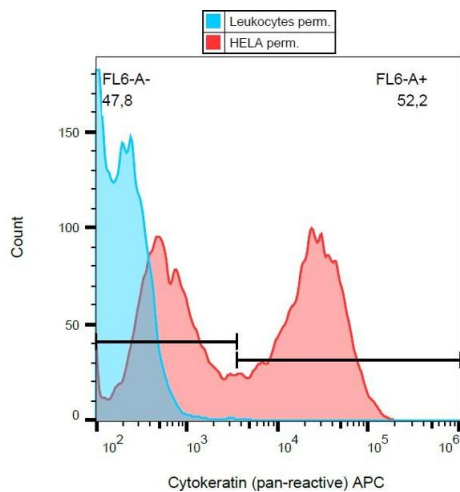
Product cited in:	Broekema, Harmsen, Koerts, Petersen, van Luyn, Navis, Popa: "Determinants of tubular bone marrow-derived cell engraftment after renal ischemia/reperfusion in rats." in: Kidney international , Vol. 68, Issue 6, pp. 2572-81, (2005) (PubMed). Hamakawa, Sumida, Tanioka, Sogawa, Yamada: "Extraction of cytokeratin from the human
-------------------	--

submandibular gland and its electrophoretic analysis." in: **Research communications in molecular pathology and pharmacology**, Vol. 101, Issue 2, pp. 115-26, (1999) ([PubMed](#)).

Bártek, Vojtšek, Stasková, Bártková, Kerekés, Rejthar, Kovarik: "A series of 14 new monoclonal antibodies to keratins: characterization and value in diagnostic histopathology." in: **The Journal of pathology**, Vol. 164, Issue 3, pp. 215-24, (1991) ([PubMed](#)).

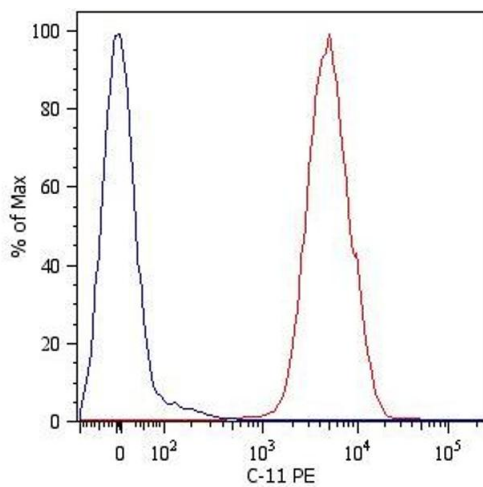
Kovarik, Rejthar, Lauerová, Vojtšek, Bártková: "Monoclonal antibodies against individual cytokeratins in the detection of metastatic spread." in: **International journal of cancer. Supplement = Journal international du cancer. Supplement**, Vol. 3, pp. 50-5, (1989) ([PubMed](#)).

Images



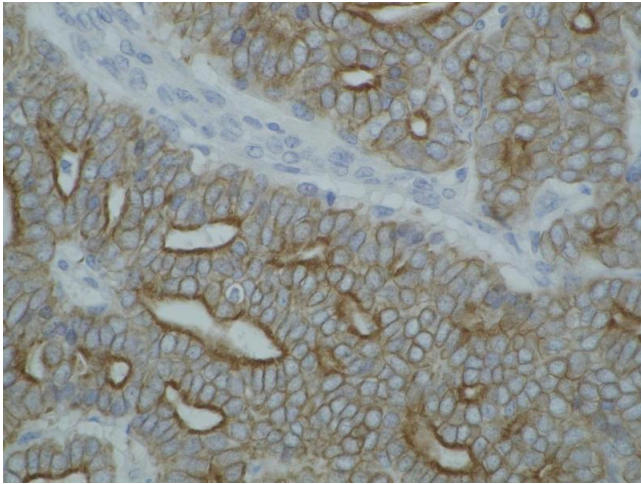
Flow Cytometry

Image 1. Flow cytometry analysis (intracellular staining) of cytokeratin expression in HeLa cells using anti-cytokeratin antibody (C-11) APC.



Flow Cytometry

Image 2. Intracellular Flow Cytometry analysis Intracellular flow cytometry analysis of cytokeratin expression in HT-29 human Caucasian colon adenocarcinoma cell line using anti-cytokeratin antibody (C-11) PE. Overlay with Isotype mouse IgG1 control (PPV-06)



Immunohistochemistry

Image 3. Detection of cytokeratin on paraffin-embedded sections of guinea pig breast carcinoma using anti-cytokeratin antibody