

Datasheet for ABIN457316
anti-Albumin antibody (Biotin)



[Go to Product page](#)

2 Images

1 Publication

Overview

Quantity:	0.1 mg
Target:	Albumin (ALB)
Reactivity:	Human
Host:	Mouse
Clonality:	Monoclonal
Conjugate:	This Albumin antibody is conjugated to Biotin
Application:	ELISA, Western Blotting (WB), Immunohistochemistry (Paraffin-embedded Sections) (IHC (p)), Radioimmunoassay (RIA)

Product Details

Immunogen:	Fraction of proteins containing albumin after ammonium sulphate precipitation and DEAE-chromatography of human serum.
Clone:	AL-01
Isotype:	IgG1
Specificity:	The mouse monoclonal antibody AL-01 reacts only with human serum albumin, a 65-67 kDa monomeric protein in human blood plasma, it is produced in liver. No cross-reactivity was observed with other serum proteins.
No Cross-Reactivity:	Cow, Mouse, Pig, Rabbit
Cross-Reactivity (Details):	Human
Purification:	Purified antibody is conjugated with biotin LC-NHS ester under optimum conditions and unconjugated antibody and free biotin are removed by size-exclusion chromatography.

Target Details

Target:	Albumin (ALB)
Alternative Name:	Albumin (ALB Products)
Background:	Albumin, Human serum albumin (65-67 kDa) is the most abundant protein in human blood plasma (produced in the liver). It has a serum half-life of approximately 20 days., HSA, SA
Gene ID:	213
UniProt:	P02768
Pathways:	Lipid Metabolism

Application Details

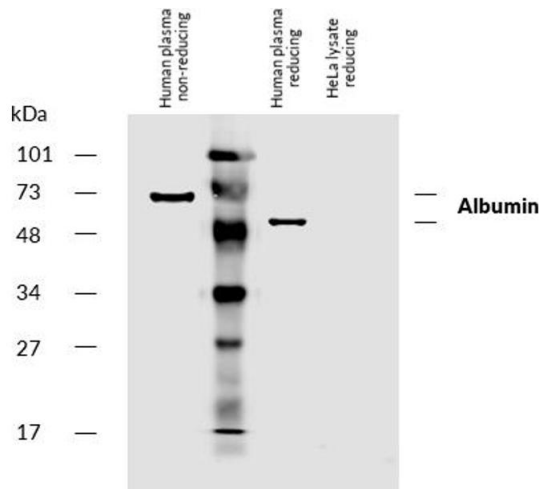
Application Notes:	Western blotting: Positive control: human plasma, recommended antibody dilution: 2-5 µg/mL.
Comment:	The purified antibody is conjugated with Biotin-LC-NHS under optimum conditions. The reagent is free of unconjugated biotin.
Restrictions:	For Research Use only

Handling

Concentration:	1 mg/mL
Buffer:	Phosphate buffered saline (PBS), pH 7.4, 15 mM sodium azide
Preservative:	Sodium azide
Precaution of Use:	This product contains Sodium azide: a POISONOUS AND HAZARDOUS SUBSTANCE which should be handled by trained staff only.
Handling Advice:	Do not freeze. Avoid prolonged exposure to light.
Storage:	4 °C
Storage Comment:	Store at 2-8°C. Do not freeze.

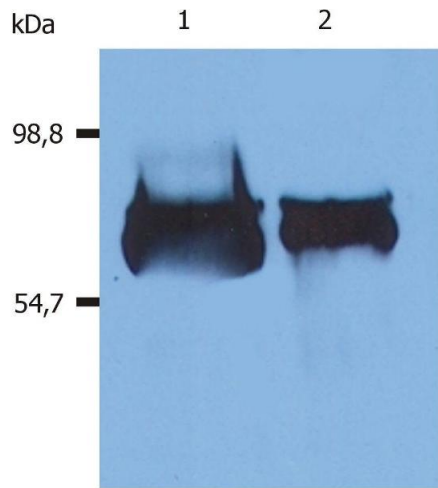
Publications

Product cited in:	Angelisová, Mack?, Mancał, Bártek, Viklický: "The characteristics of monoclonal antibodies against human albumin." in: Folia biologica , Vol. 32, Issue 5, pp. 289-94, (1989) (PubMed).
-------------------	--



Western Blotting

Image 1. Western blotting analysis of human serum albumin using mouse monoclonal antibody AL-01 on human plasma and lysate of HeLa cell line (albumin non-expressing cell line, negative control) under non-reducing and reducing conditions. Nitrocellulose membrane was probed with 5 µg/mL of biotinylated mouse anti-human albumin monoclonal antibody followed by IRDye800-conjugated streptavidin. Albumin was detected at approximately 50-67 kDa.



Western Blotting

Image 2. Western Blotting analysis (reducing conditions) of human serum albumin using anti-human Albumin (AL-01). Lane 1: Human blood plasma Lane 2: Human blood serum