

Datasheet for ABIN457350
anti-L-Selectin antibody (FITC)**2** Images**9** Publications[Go to Product page](#)

Overview

Quantity:	0.1 mg
Target:	L-Selectin (SELL)
Reactivity:	Mouse
Host:	Rat
Clonality:	Monoclonal
Conjugate:	This L-Selectin antibody is conjugated to FITC
Application:	Flow Cytometry (FACS)

Product Details

Immunogen:	C3H/eb mouse B cell lymphoma 38C-13
Clone:	Mel-14
Isotype:	IgG2a
Specificity:	The rat monoclonal antibody MEL-14 reacts with an extracellular epitope of murine CD62L (L-selectin), a 75 kDa single chain type I glycoprotein expressed on most peripheral blood B lymphocytes, T lymphocytes, monocytes and granulocytes, it is also present on a subset of NK cells and certain hematopoietic malignant cells.
Cross-Reactivity (Details):	Mouse
Purification:	Purified antibody is conjugated with fluorescein isothiocyanate (FITC) under optimum conditions and unconjugated antibody and free fluorochrome are removed by size-exclusion chromatography.

Target Details

Target:	L-Selectin (SELL)
Alternative Name:	CD62L / L-Selectin (SELL Products)
Background:	Selectin L,CD62L (L-selectin) is an adhesion glycoprotein that is constitutively expressed on the cell surface of leukocytes and mediates their homing to inflammatory sites and peripheral lymph nodes by enabling rolling along the venular wall. CD62L is also involved in activation-induced neutrophil aggregation. Activation-dependent CD62L shedding, however, counteracts neutrophil rolling. CD62L has also signaling roles including enhance of chemokine receptor expression. Similarly to CD62P, the major ligand of CD62L is PSGL-1 (P-selectin glycoprotein ligand-1).,L-selectin, Lsel, Sell, Lam1, Lecam, Leu8, Lnhp, Lyam1, Plnhp
Gene ID:	20343
UniProt:	Q3TCF3

Application Details

Application Notes:	Flow cytometry: Recommended dilution: 1 µg/mL.
Comment:	The purified antibody is conjugated with Fluorescein isothiocyanate (FITC) under optimum conditions. The reagent is free of unconjugated FITC.
Restrictions:	For Research Use only

Handling

Concentration:	0.5 mg/mL
Buffer:	Phosphate buffered saline (PBS), pH 7.4, 15 mM sodium azide
Preservative:	Sodium azide
Precaution of Use:	This product contains Sodium azide: a POISONOUS AND HAZARDOUS SUBSTANCE which should be handled by trained staff only.
Handling Advice:	Do not freeze. Avoid prolonged exposure to light.
Storage:	4 °C
Storage Comment:	Store at 2-8°C. Protect from prolonged exposure to light. Do not freeze.

Publications

Product cited in: Xu, Manivannan, Crane, Dawson, Liversidge: "Critical but divergent roles for CD62L and CD44 in directing blood monocyte trafficking in vivo during inflammation." in: **Blood**, Vol. 112, Issue 4, pp. 1166-74, (2008) ([PubMed](#)).

Pop, Wong, He, Wang, Wallet, Goudy, Tisch: "The type and frequency of immunoregulatory CD4+ T-cells govern the efficacy of antigen-specific immunotherapy in nonobese diabetic mice." in: **Diabetes**, Vol. 56, Issue 5, pp. 1395-402, (2007) ([PubMed](#)).

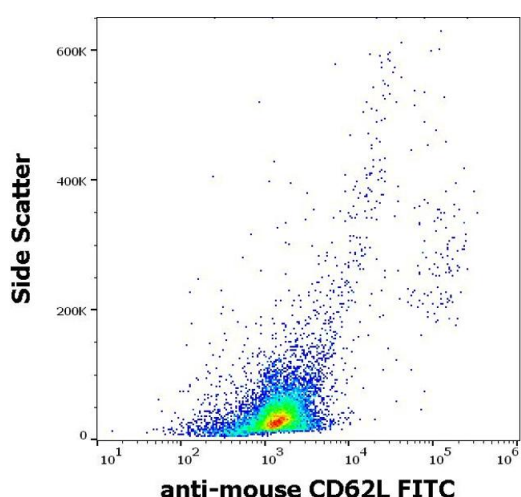
Richards, Longhi, Wright, Gallimore, Ager: "CD62L (L-selectin) down-regulation does not affect memory T cell distribution but failure to shed compromises anti-viral immunity." in: **Journal of immunology (Baltimore, Md. : 1950)**, Vol. 180, Issue 1, pp. 198-206, (2007) ([PubMed](#)).

Chen, Cui, Sempowski, Liu, Chao: "Transfer of allogeneic CD62L- memory T cells without graft-versus-host disease." in: **Blood**, Vol. 103, Issue 4, pp. 1534-41, (2004) ([PubMed](#)).

Chin, Miller, Graham, Parviz, Zacur, Patel, Duong, Bear: "Bryostatin 1/ionomycin (B/I) ex vivo stimulation preferentially activates L-selectinlow tumor-sensitized lymphocytes." in: **International immunology**, Vol. 16, Issue 9, pp. 1283-94, (2004) ([PubMed](#)).

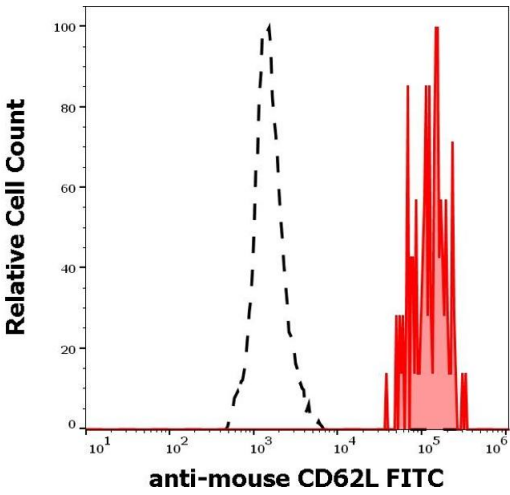
There are more publications referencing this product on: [Product page](#)

Images



Flow Cytometry

Image 1. Flow cytometry surface staining pattern of murine splenocyte suspension stained using anti-mouse CD62L (Mel-14) FITC antibody (concentration in sample 9 µg/mL).



Flow Cytometry

Image 2. Separation of murine CD62L positive cells (red-filled) from murine CD62L negative cells (black-dashed) in flow cytometry analysis (surface staining) of murine splenocyte suspension stained using anti-mouse CD62L (Mel-14) FITC antibody (concentration in sample 9 µg/mL).