

Datasheet for ABIN457359

Mouse anti-Human IgM Antibody (HRP)**3** Images[Go to Product page](#)

Overview

Quantity:	0.1 mg
Target:	IgM
Reactivity:	Human
Host:	Mouse
Clonality:	Monoclonal
Conjugate:	HRP
Application:	ELISA, Western Blotting (WB)

Product Details

Immunogen:	Purified human IgM.
Clone:	CH2
Isotype:	IgG1
Specificity:	The antibody CH2 reacts with Fc fragment of human IgM.
Cross-Reactivity (Details):	Human
Purification:	Purified antibody is conjugated with activated horseradish peroxidase (HRP) of high specific enzyme activity under optimum conditions and unconjugated antibody and free HRP are removed by size-exclusion chromatography.

Target Details

Target:	IgM
---------	-----

Target Details

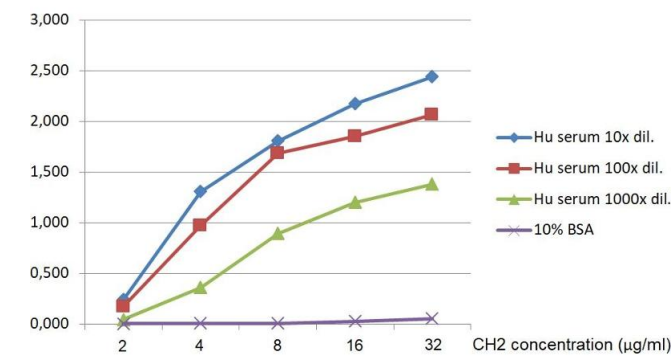
Abstract:	IgM Products
Target Type:	Antibody
Background:	Immunoglobulin M (IgM) is produced as a 900 kDa pentamer, which is an efficient complement binder. This antibody type is produced initially in the immune response and it is the first immunoglobulin class to be synthesized by a fetus or newborn. IgM antibodies do not cross the placenta. IgM concentration in blood is 0.12 g/l and its biological survival (plasma T1/2) is 5 days.,immunoglobulin M
Molecular Weight:	900 kDa

Application Details

Application Notes:	Western blotting: Recommended dilution: 1 µg/mL. Flow cytometry: Recommended dilution: 1-4 µg/mL, extracellular and intracellular staining.
Comment:	The purified antibody is conjugated with Horseradish Peroxidase (HRP) of high specific activity and RZ=3.
Restrictions:	For Research Use only

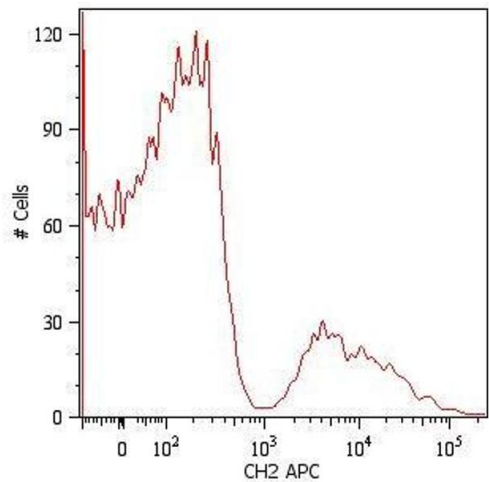
Handling

Format:	Liquid
Concentration:	1 mg/mL
Buffer:	Stabilizing phosphate buffered saline (PBS), pH 7.4, 0.01 % thimerosal
Preservative:	Thimerosal (Merthiolate)
Precaution of Use:	This product contains Thimerosal (Merthiolate): a POISONOUS AND HAZARDOUS SUBSTANCE which should be handled by trained staff only.
Handling Advice:	Do not freeze. Avoid prolonged exposure to light.
Storage:	4 °C
Storage Comment:	Store at 2-8°C. Protect from prolonged exposure to light. Do not freeze.



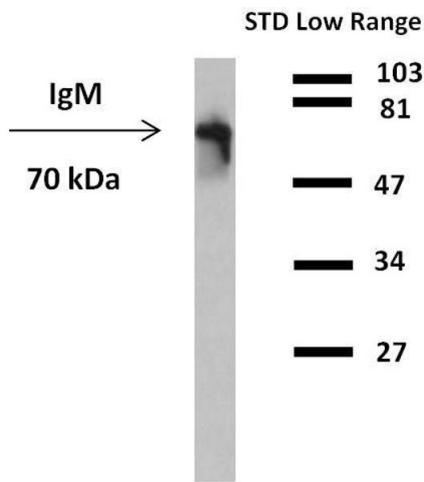
ELISA

Image 1. ELISA analysis of IgM in human serum using capture antibody MA2 and HRP-conjugated detection antibody CH2. Three different dilutions of human serum were used, and 10 % BSA as negative control.



Flow Cytometry

Image 2. Surface staining of human peripheral blood cells with anti-human IgM (CH2) APC. Cells in the lymphocyte gate were used for analysis.



Western Blotting

Image 3. Western blotting detection (reducing conditions) of IgM in human plasma using anti-human IgM (CH2) peroxidase conjugate.