



[Go to Product page](#)

Datasheet for ABIN457419  
**anti-beta Catenin antibody**

4 Images

Overview

Quantity:	0.1 mg
Target:	beta Catenin (CATNB)
Reactivity:	Human, Mouse, Hamster
Host:	Mouse
Clonality:	Monoclonal
Conjugate:	This beta Catenin antibody is un-conjugated
Application:	Western Blotting (WB), Flow Cytometry (FACS), Immunoprecipitation (IP), Immunocytochemistry (ICC)

Product Details

Immunogen:	Recombinant human beta-catenin
Clone:	EM-22
Isotype:	IgG2a
Specificity:	The mouse monoclonal antibody EM-22 reacts with C-terminal part of beta-catenin (intracellular antigen), an 88 kDa multifunctional protein involved both in cell adhesion and in activation of transcription.
Cross-Reactivity (Details):	Human, Mouse, Hamster
Purification:	Purified by protein-A affinity chromatography.
Purity:	> 95 % (by SDS-PAGE)

## Target Details

---

Target:	beta Catenin (CATNB)
Alternative Name:	beta-Catenin ( <a href="#">CATNB Products</a> )
Background:	<p>Catenin beta 1, Beta-catenin is a multifunctional protein involved both in cell adhesion and in activation of transcription. Calcium-dependent intercellular adhesion transmembrane glycoprotein E-cadherin interacts by its cytoplasmic domain with reciprocally bound alpha, beta and gamma catenin. Beta-catenin links this complex through alpha-actinin to the cytoskeleton. Functional cadherin-catenin system is important for invasiveness of tumour cells. Beta-catenin level in cytoplasm is controlled by glycogen synthase kinase-3 beta. When activity of this kinase is blocked (e.g. by excessive stimulation of Wnt signaling pathway), hypophosphorylated stable form of beta-catenin accumulates in the cytoplasm, translocates to the nucleus and activates transcription of genes including those that are involved in cell cycle control. As a result, cell division and neoplastic transformation are promoted., CTNNB1, EVR7, MRD19</p>
Gene ID:	1499
UniProt:	<a href="#">P35222</a>
Pathways:	<a href="#">Peptide Hormone Metabolism</a>

## Application Details

---

Application Notes:	<p>Immunocytochemistry: Positive control: HT29 human colon adenocarcinoma cell line.</p> <p>Western blotting: Positive control: HT29 human colon adenocarcinoma cell line, FHC human cell line, DLD1 human colon adenocarcinoma cell line, KW1 murine cell line, C57MG murine cell line, 3T3 murine fibroblast cell line.</p> <p>Flow cytometry: Recommended dilution: 1-4 µg/mL. Intracellular staining.</p>
Restrictions:	For Research Use only

## Handling

---

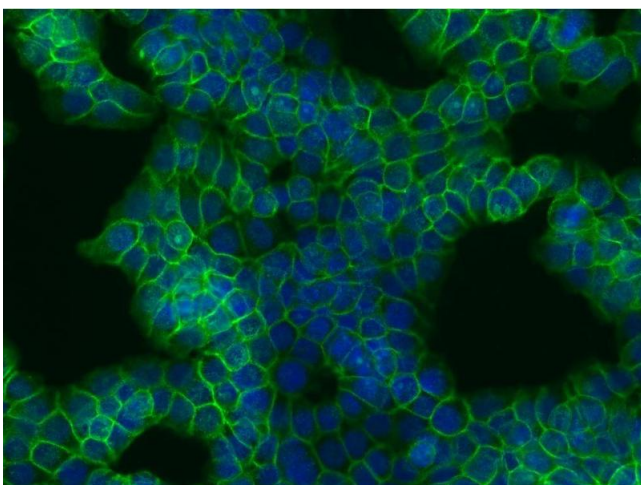
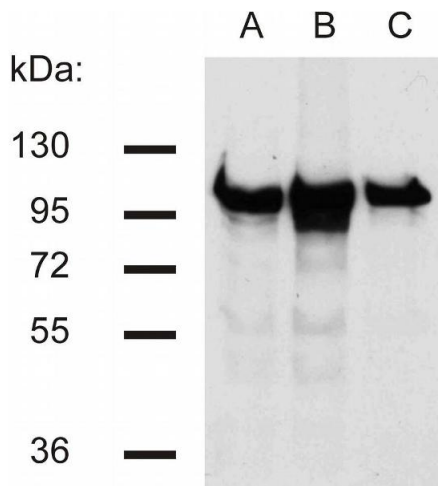
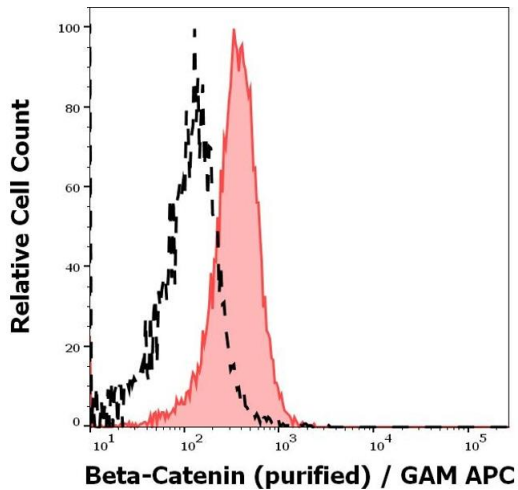
Concentration:	1 mg/mL
Buffer:	Phosphate buffered saline (PBS), pH 7.4, 15 mM sodium azide
Preservative:	Sodium azide
Precaution of Use:	This product contains Sodium azide: a POISONOUS AND HAZARDOUS SUBSTANCE which should be handled by trained staff only.
Handling Advice:	<b>Do not freeze.</b>

## Handling

Storage: 4 °C

Storage Comment: Store at 2-8°C. Do not freeze.

## Images



### Flow Cytometry

**Image 1.** Separation of MCF-7 cells stained using anti-beta-Catenin (EM-22) purified antibody (concentration in sample 9 µg/mL, GAM APC, red-filled) from MCF-7 cells unstained by primary antibody (GAM APC, black-dashed) in flow cytometry analysis (intracellular staining).

### Western Blotting

**Image 2.** Western blotting analysis of beta-catenin in murine 3T3 (A), C57 (B) and KW1 (C) cell lines using antibody.

### Immunocytochemistry

**Image 3.** Immunocytochemistry staining of beta-catenin in human colon adenocarcinoma cell line HT29 using EM-22 antibody (green). Cell nuclei visualized by DAPI (blue).

Please check the [product details page](#) for more images. Overall 4 images are available for ABIN457419.