

Datasheet for ABIN457437

anti-SELPLG antibody[Go to Product page](#)**1** Image

Overview

Quantity:	0.1 mg
Target:	SELPLG
Reactivity:	Human
Host:	Mouse
Clonality:	Monoclonal
Conjugate:	This SELPLG antibody is un-conjugated
Application:	Flow Cytometry (FACS)

Product Details

Immunogen:	Human thymocytes
Clone:	TC2
Isotype:	IgG1
Specificity:	The antibody TC2 reacts with an extracellular epitope of CD162, a 220 kDa type I integral membrane protein expressed as disulfide-linked homodimer (sialomucin family). CD162 is present on the most peripheral blood T lymphocytes, monocytes, granulocytes, it is also expressed on a subpopulation of B lymphocytes and CD34 ⁺ bone marrow cells.
Cross-Reactivity (Details):	Human
Purification:	Purified by protein-A affinity chromatography.
Purity:	> 95 % (by SDS-PAGE)

Target Details

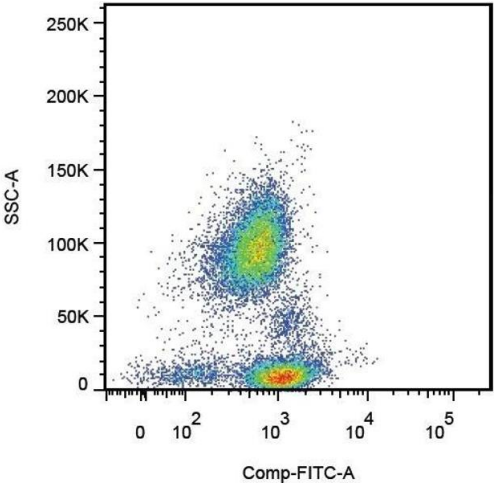
Target:	SELPLG
Alternative Name:	CD162 (SELPLG Products)
Background:	Selectin P ligand,CD162 (P-selectin glycoprotein ligand-1, PSGL-1) is a sialomucin constitutively expressed as a disulfide-linked homodimer of two 120 kDa subunits on the surface of circulating leukocytes. CD162 serves as a ligand for P- E- and L-selectin, with the highest affinity for P-selectin. It is thus involved in leukocyte rolling at the endothelial surfaces, prerequisite for firm leukocyte adhesion and subsequent transendothelial migration. CD162 also mediates leukocyte-platelet adhesion and interleukocyte contacts. Whereas serving as an adhesion molecule on mature leukocytes, CD162 is a potent negative regulator of human hematopoietic progenitors.,PSGL-1, Selectin P ligand, SELPLG, CLA
Gene ID:	6404
UniProt:	Q14242

Application Details

Application Notes:	Flow cytometry: Recommended dilution: 1.5 - 2.5 µg/mL, positive control: human peripheral blood.
Restrictions:	For Research Use only

Handling

Concentration:	1 mg/mL
Buffer:	Phosphate buffered saline (PBS), pH 7.4, 15 mM sodium azide
Preservative:	Sodium azide
Precaution of Use:	This product contains Sodium azide: a POISONOUS AND HAZARDOUS SUBSTANCE which should be handled by trained staff only.
Handling Advice:	Do not freeze.
Storage:	4 °C
Storage Comment:	Store at 2-8°C. Do not freeze.



Flow Cytometry

Image 1. Surface staining of human peripheral blood cells with anti-human CD162 (clone TC2).