

Datasheet for ABIN461686
anti-PTH2R antibody (N-Term)

3 Images

[Go to Product page](#)

Overview

Quantity:	50 µg
Target:	PTH2R
Binding Specificity:	N-Term
Reactivity:	Human, Cow, Monkey
Host:	Rabbit
Clonality:	Polyclonal
Application:	ELISA, Immunohistochemistry (IHC), Immunohistochemistry (Paraffin-embedded Sections) (IHC (p))

Product Details

Brand:	IHC-plus™
Immunogen:	Synthetic 18 amino acid peptide from N-Terminus of human PTH2R / PTHR2. Percent identity with other species by BLAST analysis: Human, Gorilla, Gibbon, Monkey, Bovine, Elephant (100%), Mouse, Dog, Bat, Panda, Rabbit, Pig (94%), Rat, Hamster (89%), Platypus (83%). Type of Immunogen: Synthetic peptide
Specificity:	Human PTH2R / PTHR2. BLAST analysis of the peptide immunogen showed no homology with other human proteins.
Predicted Reactivity:	Percent identity with other species by BLAST analysis: Human, Gorilla, Gibbon, Monkey, Bovine, Elephant (100%) Mouse, Dog, Bat, Panda, Rabbit, Pig (94%) Rat, Hamster (89%) Platypus (83%).
Purification:	Immunoaffinity purified

Target Details

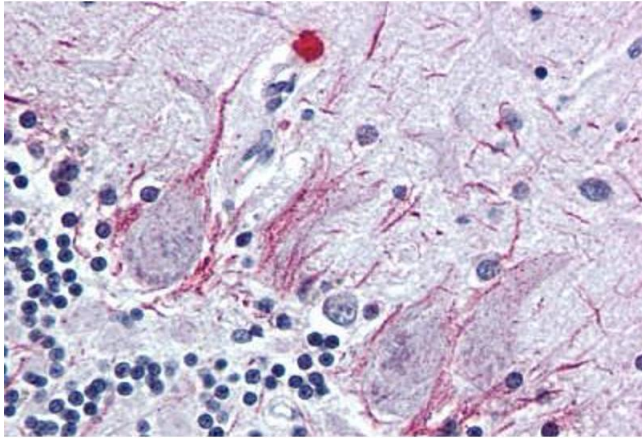
Target:	PTH2R
Alternative Name:	/ PTH2R (PTH2R Products)
Background:	Name/Gene ID: PTH2R Subfamily: Parathyroid hormone Family: GPCR Synonyms: PTH2R, Parathyroid hormone 2 receptor, Parathyroid hormone receptor 2, PTH2 receptor, PTHR2, Hpth2 receptor
Gene ID:	5746
Pathways:	cAMP Metabolic Process

Application Details

Application Notes:	Approved: ELISA, IHC, IHC-P (5 - 10 µg/mL)
Comment:	Target Species of Antibody: Human
Restrictions:	For Research Use only

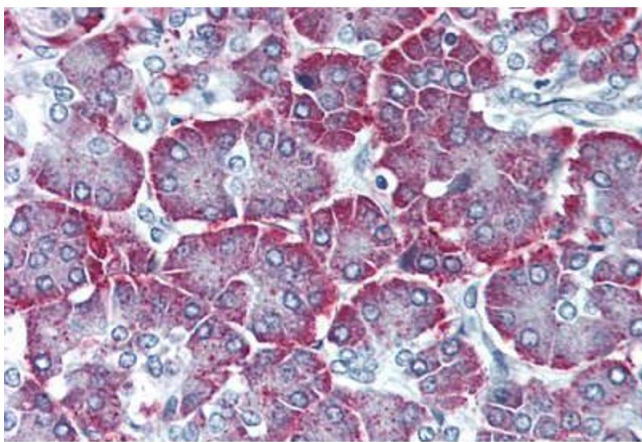
Handling

Format:	Liquid
Concentration:	Lot specific
Buffer:	PBS, less than 0.1 % sodium azide.
Preservative:	Sodium azide
Precaution of Use:	This product contains Sodium azide: a POISONOUS AND HAZARDOUS SUBSTANCE which should be handled by trained staff only.
Storage:	4 °C, -20 °C
Storage Comment:	Aliquot and store undiluted at -20°C or below for up to 1 year. Can be stored undiluted at 4°C for up to 1 month. Avoid freeze-thaw cycles.
Expiry Date:	12 months



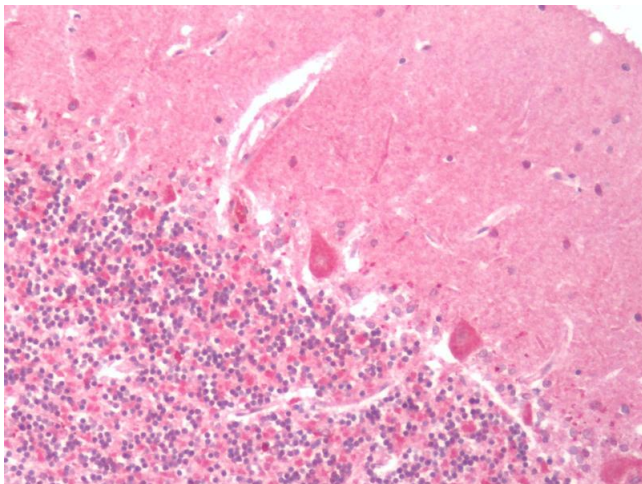
Immunohistochemistry (Formalin-fixed Paraffin-embedded Sections)

Image 1. Brain, cerebellum, Human: Formalin-Fixed, Paraffin-Embedded (FFPE)



Immunohistochemistry (Formalin-fixed Paraffin-embedded Sections)

Image 2. Pancreas, Human: Formalin-Fixed, Paraffin-Embedded (FFPE)



Immunohistochemistry (Paraffin-embedded Sections)

Image 3. Human Brain, Cerebellum: Formalin-Fixed, Paraffin-Embedded (FFPE)