

Datasheet for ABIN461688  
**anti-GPR26 antibody (Internal Region)**



[Go to Product page](#)

3 Images

## Overview

Quantity:	50 µg
Target:	GPR26
Binding Specificity:	Internal Region
Reactivity:	Human, Dog, Cow, Horse, Monkey
Host:	Rabbit
Clonality:	Polyclonal
Conjugate:	This GPR26 antibody is un-conjugated
Application:	Immunohistochemistry (Paraffin-embedded Sections) (IHC (p)), Immunohistochemistry (IHC)

## Product Details

Brand:	IHC-plus™
Immunogen:	Synthetic 11 amino acid peptide from internal region of human GPR26. Percent identity with other species by BLAST analysis: Human, Gibbon, Monkey, Marmoset, Bovine, Dog, Elephant, Panda, Horse (100%), Mouse, Rat, Rabbit, Pig (91%), Stickleback (82%).  Type of Immunogen: Synthetic peptide
Specificity:	Human GPR26. BLAST analysis of the peptide immunogen showed no homology with other human proteins.
Predicted Reactivity:	Percent identity with other species by BLAST analysis: Human, Gibbon, Monkey, Marmoset, Bovine, Dog, Elephant, Panda, Horse (100%) Mouse, Rat, Rabbit, Pig (91%) Stickleback (82%).
Purification:	Immunoaffinity purified

## Target Details

---

Target:	GPR26
Alternative Name:	GPR26 ( <a href="#">GPR26 Products</a> )
Background:	Name/Gene ID: GPR26 Subfamily: Orphan-A Family: GPCR  Synonyms: GPR26, G-protein coupled receptor 26, G protein-coupled receptor 26
Gene ID:	2849

## Application Details

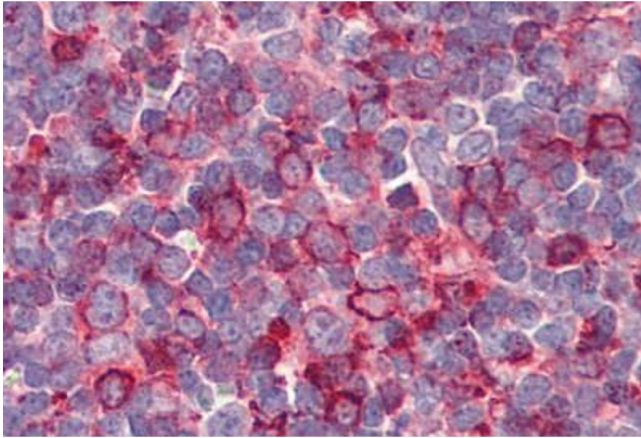
---

Application Notes:	Approved: IHC, IHC-P (5 µg/mL)  Usage: Immunohistochemistry with formalin-fixed paraffin-embedded tissues requires pretreatment with Proteinase K.
Comment:	Target Species of Antibody: Human
Restrictions:	For Research Use only

## Handling

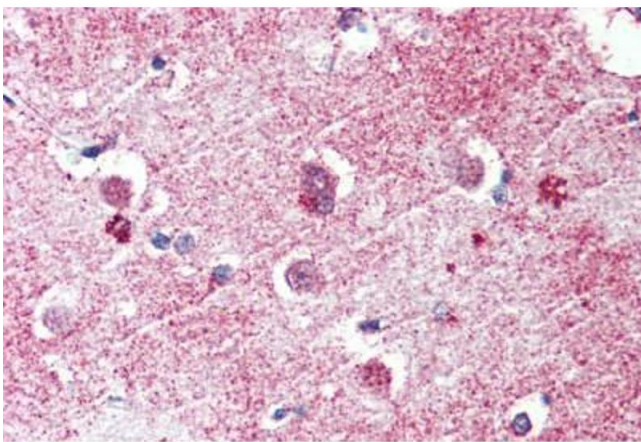
---

Format:	Liquid
Concentration:	Lot specific
Buffer:	PBS, less than 0.1 % sodium azide.
Preservative:	Sodium azide
Precaution of Use:	This product contains Sodium azide: a POISONOUS AND HAZARDOUS SUBSTANCE which should be handled by trained staff only.
Storage:	4 °C, -20 °C
Storage Comment:	Aliquot and store undiluted at -20°C or below for up to 1 year. Can be stored undiluted at 4°C for up to 1 month. Avoid freeze-thaw cycles.
Expiry Date:	12 months



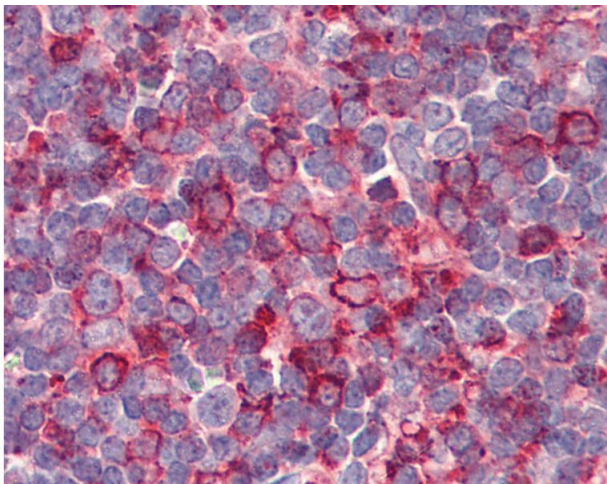
**Immunohistochemistry (Formalin-fixed Paraffin-embedded Sections)**

**Image 1.** Tonsil, Human: Formalin-Fixed, Paraffin-Embedded (FFPE)



**Immunohistochemistry (Formalin-fixed Paraffin-embedded Sections)**

**Image 2.** Brain, cortex, Human: Formalin-Fixed, Paraffin-Embedded (FFPE)



**Immunohistochemistry**

**Image 3.** Anti-GPR26 antibody IHC of human tonsil. Immunohistochemistry of formalin-fixed, paraffin-embedded tissue after heat-induced antigen retrieval.