

Datasheet for ABIN461689

anti-G Protein-Coupled Receptor 126 antibody (N-Term)**3** Images[Go to Product page](#)

Overview

Quantity:	50 µg
Target:	G Protein-Coupled Receptor 126 (GPR126)
Binding Specificity:	N-Term
Reactivity:	Human, Mouse
Host:	Rabbit
Clonality:	Polyclonal
Conjugate:	This G Protein-Coupled Receptor 126 antibody is un-conjugated
Application:	ELISA, Immunohistochemistry (IHC), Immunohistochemistry (Paraffin-embedded Sections) (IHC (p))

Product Details

Brand:	IHC-plus™
Immunogen:	Synthetic 20 amino acid peptide from N-Terminus of human GPR126. Percent identity with other species by BLAST analysis: Human, Gorilla, Gibbon, Monkey, Mouse (100%), Marmoset, Rat, Bovine, Dog, Panda, Rabbit, Pig (95%), Bat, Elephant, Horse (90%), Opossum, Platypus (80%). Type of Immunogen: Synthetic peptide
Specificity:	Human GPR126. BLAST analysis of the peptide immunogen showed no homology with other human proteins, except GPR64 (50 %).
Predicted Reactivity:	Percent identity with other species by BLAST analysis: Human, Gorilla, Gibbon, Monkey, Mouse

Product Details

(100%) Marmoset, Rat, Bovine, Dog, Panda, Rabbit, Pig (95%) Bat, Elephant, Horse (90%)
Opossum, Platypus (80%).

Purification: Immunoaffinity purified

Target Details

Target: G Protein-Coupled Receptor 126 (GPR126)

Alternative Name: ADGRG6 / GPR126 ([GPR126 Products](#))

Background: Name/Gene ID: ADGRG6
Subfamily: Orphan-B
Family: GPCR

Synonyms: ADGRG6, APG1, G-protein coupled receptor 126, GPR126, PS1TP2, VIGR, DREG, G protein-coupled receptor 126

Gene ID: 57211

Application Details

Application Notes: Approved: ELISA, IHC, IHC-P (10 µg/mL)

Usage: Immunohistochemistry with formalin-fixed paraffin-embedded tissues requires pretreatment with Proteinase K.

Comment: Target Species of Antibody: Human

Restrictions: For Research Use only

Handling

Format: Liquid

Concentration: Lot specific

Buffer: PBS, less than 0.1 % sodium azide.

Preservative: Sodium azide

Precaution of Use: This product contains Sodium azide: a POISONOUS AND HAZARDOUS SUBSTANCE which should be handled by trained staff only.

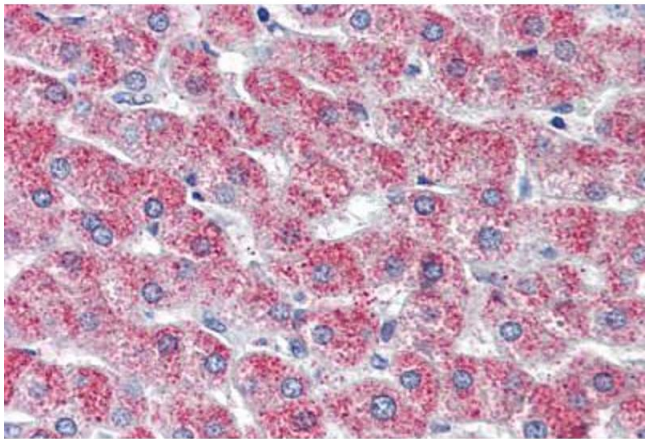
Storage: 4 °C,-20 °C

Handling

Storage Comment: Aliquot and store undiluted at -20°C or below for up to 1 year. Can be stored undiluted at 4°C for up to 1 month. Avoid freeze-thaw cycles.

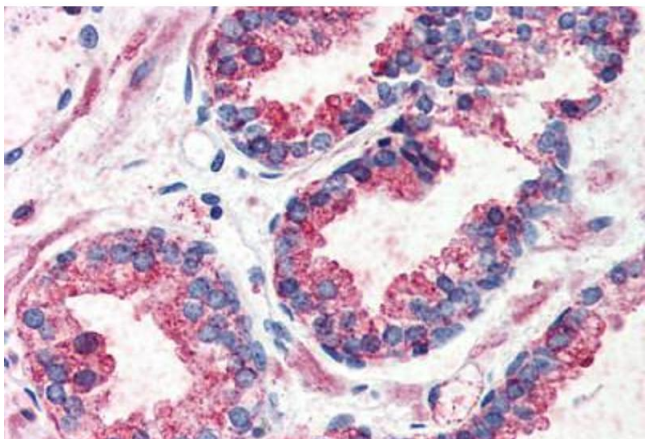
Expiry Date: 12 months

Images



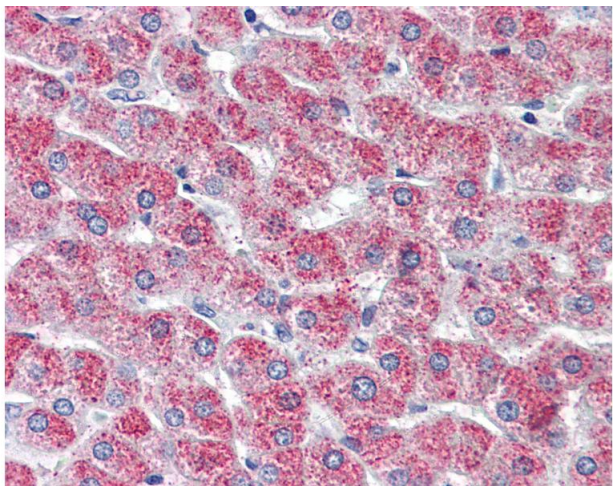
Immunohistochemistry (Formalin-fixed Paraffin-embedded Sections)

Image 1. Liver, Human: Formalin-Fixed, Paraffin-Embedded (FFPE)



Immunohistochemistry (Formalin-fixed Paraffin-embedded Sections)

Image 2. Prostate, Human: Formalin-Fixed, Paraffin-Embedded (FFPE)



Immunohistochemistry

Image 3. Anti-GPR126 antibody IHC of human liver. Immunohistochemistry of formalin-fixed, paraffin-embedded tissue after heat-induced antigen retrieval.