

Datasheet for ABIN461701  
**anti-EPHX2 antibody (C-Term)**



[Go to Product page](#)

3 Images

## Overview

Quantity:	50 µg
Target:	EPHX2
Binding Specificity:	C-Term
Reactivity:	Human, Monkey
Host:	Rabbit
Clonality:	Polyclonal
Conjugate:	This EPHX2 antibody is un-conjugated
Application:	ELISA, Immunohistochemistry (IHC), Immunohistochemistry (Paraffin-embedded Sections) (IHC (p))

## Product Details

Brand:	IHC-plus™
Immunogen:	Synthetic 17 amino acid peptide from C-Terminus of human EPHX2. Percent identity with other species by BLAST analysis: Human, Gorilla, Orangutan, Gibbon, Monkey, Marmoset, Elephant (100%), Bat, Bovine, Horse (94%), Dog, Rabbit, Pig (88%), Mouse, Rat, Hamster, Stickleback (82%).  Type of Immunogen: Synthetic peptide
Specificity:	Human EPHX2. BLAST analysis of the peptide immunogen showed no homology with other human proteins.
Predicted Reactivity:	Percent identity with other species by BLAST analysis: Human, Gorilla, Orangutan, Gibbon,

## Product Details

---

Monkey, Marmoset, Elephant (100%) Bat, Bovine, Horse (94%) Dog, Rabbit, Pig (88%) Mouse, Rat, Hamster, Stickleback (82%).

Purification: Immunoaffinity purified

## Target Details

---

Target: EPHX2

Alternative Name: SEH / EPHX2 ([EPHX2 Products](#))

Background: Name/Gene ID: EPHX2

Synonyms: EPHX2, CEH, Epoxide hydratase, Epoxide hydrolase, soluble, Epoxide hydrolase 2, cytosolic, SEH, Soluble epoxide hydrolase

Gene ID: 2053

## Application Details

---

Application Notes: Approved: ELISA, IHC, IHC-P (5 - 10 µg/mL)

Usage: Immunohistochemistry with formalin-fixed paraffin-embedded tissues requires pretreatment with Proteinase K.

Comment: Target Species of Antibody: Human

Restrictions: For Research Use only

## Handling

---

Format: Liquid

Concentration: Lot specific

Buffer: PBS, less than 0.1 % sodium azide.

Preservative: Sodium azide

Precaution of Use: This product contains Sodium azide: a POISONOUS AND HAZARDOUS SUBSTANCE which should be handled by trained staff only.

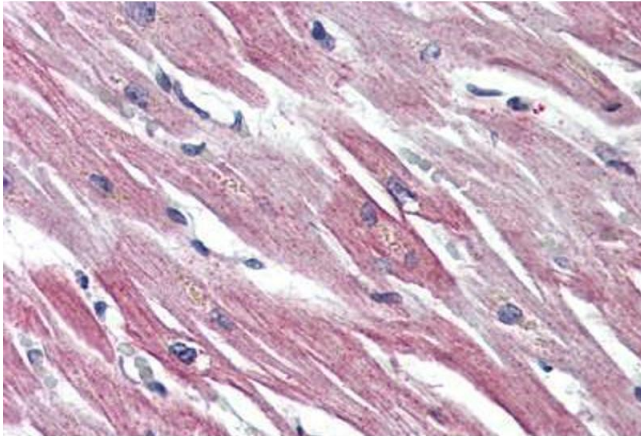
Storage: 4 °C, -20 °C

Storage Comment: Aliquot and store undiluted at -20°C or below for up to 1 year. Can be stored undiluted at 4°C for

up to 1 month. Avoid freeze-thaw cycles.

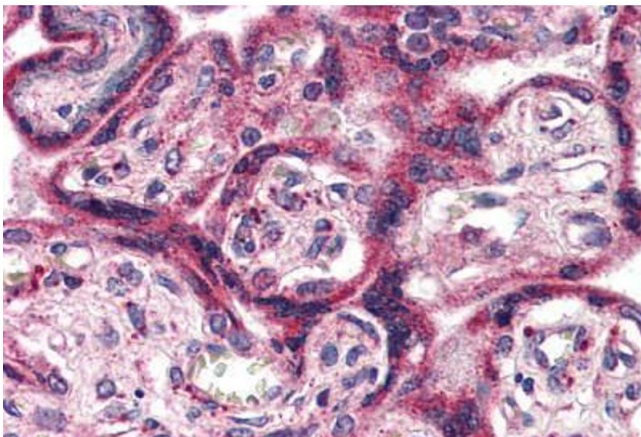
Expiry Date: 12 months

Images



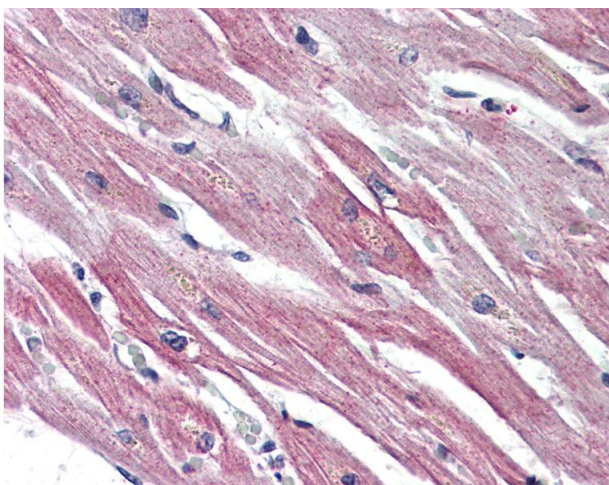
**Immunohistochemistry (Formalin-fixed Paraffin-embedded Sections)**

**Image 1.** Heart, Human: Formalin-Fixed, Paraffin-Embedded (FFPE)



**Immunohistochemistry (Formalin-fixed Paraffin-embedded Sections)**

**Image 2.** Placenta, Human: Formalin-Fixed, Paraffin-Embedded (FFPE)



**Immunohistochemistry**

**Image 3.** Anti-EPHX2 antibody IHC of human heart. Immunohistochemistry of formalin-fixed, paraffin-embedded tissue after heat-induced antigen retrieval.