

Datasheet for ABIN461705  
**anti-SRPX2 antibody (C-Term)**

2 Images



[Go to Product page](#)

## Overview

Quantity:	50 µg
Target:	SRPX2
Binding Specificity:	C-Term
Reactivity:	Human, Monkey
Host:	Rabbit
Clonality:	Polyclonal
Conjugate:	This SRPX2 antibody is un-conjugated
Application:	Immunohistochemistry (IHC), Immunohistochemistry (Paraffin-embedded Sections) (IHC (p))

## Product Details

Brand:	IHC-plus™
Immunogen:	Synthetic 14 amino acid peptide from C-Terminus of human SRPX2. Percent identity with other species by BLAST analysis: Human, Chimpanzee, Gorilla, Orangutan, Monkey, Marmoset (100%), Mouse, Rat, Hamster, Elephant, Panda, Dog, Bat, Bovine, Horse, Pig, Guinea pig (93%), Galago, Rabbit (86%).  Type of Immunogen: Synthetic peptide
Specificity:	Human SRPX2. BLAST analysis of the peptide immunogen showed no homology with other human proteins.
Predicted Reactivity:	Percent identity with other species by BLAST analysis: Human, Chimpanzee, Gorilla, Orangutan, Monkey, Marmoset (100%) Mouse, Rat, Hamster, Elephant, Panda, Dog, Bat, Bovine, Horse, Pig,

## Product Details

---

Guinea pig (93%) Galago, Rabbit (86%).

Purification: Immunoaffinity purified

## Target Details

---

Target: SRPX2

Alternative Name: SRPX2 ([SRPX2 Products](#))

Background: Name/Gene ID: SRPX2

Synonyms: SRPX2, BPP, CBPS, PMGX, RESDX, SRPUL

Gene ID: 27286

## Application Details

---

Application Notes: Approved: IHC, IHC-P (10 µg/mL)

Usage: Immunohistochemistry with formalin-fixed paraffin-embedded tissues requires pretreatment using HIER with citrate buffer.

Comment: Target Species of Antibody: Human

Restrictions: For Research Use only

## Handling

---

Format: Liquid

Concentration: Lot specific

Buffer: PBS, less than 0.1 % sodium azide.

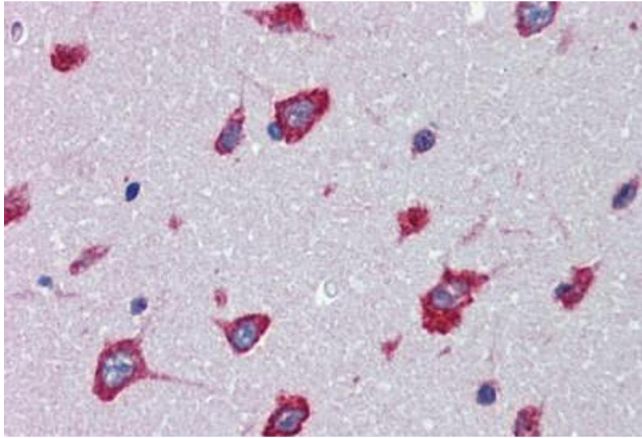
Preservative: Sodium azide

Precaution of Use: This product contains Sodium azide: a POISONOUS AND HAZARDOUS SUBSTANCE which should be handled by trained staff only.

Storage: 4 °C, -20 °C

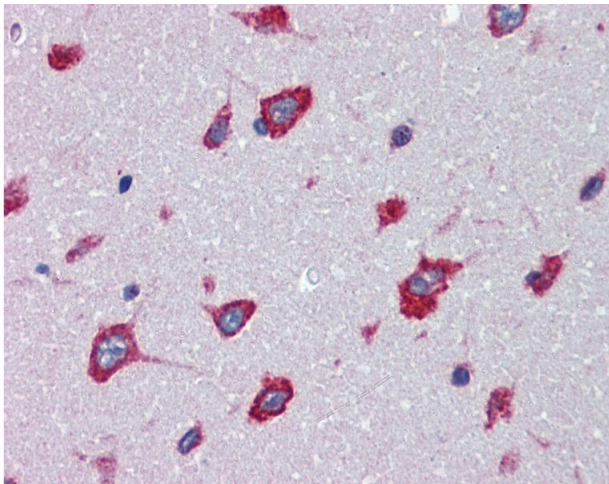
Storage Comment: Aliquot and store undiluted at -20°C or below for up to 1 year. Can be stored undiluted at 4°C for up to 1 month. Avoid freeze-thaw cycles.

Expiry Date: 12 months



### Immunohistochemistry (Formalin-fixed Paraffin-embedded Sections)

**Image 1.** Brain, cortex, Human: Formalin-Fixed, Paraffin-Embedded (FFPE)



### Immunohistochemistry

**Image 2.** Anti-SRPX2 antibody IHC of human brain, cortex. Immunohistochemistry of formalin-fixed, paraffin-embedded tissue after heat-induced antigen retrieval.