

Datasheet for ABIN461707
anti-LRRN4 antibody (N-Term)

3 Images



[Go to Product page](#)

Overview

Quantity:	50 µg
Target:	LRRN4
Binding Specificity:	N-Term
Reactivity:	Human
Host:	Rabbit
Clonality:	Polyclonal
Conjugate:	This LRRN4 antibody is un-conjugated
Application:	Immunohistochemistry (IHC), Immunohistochemistry (Paraffin-embedded Sections) (IHC (p))

Product Details

Brand:	IHC-plus™
Immunogen:	Synthetic 16 amino acid peptide from N-Terminus of human LRRN4 / C20orf75. Percent identity with other species by BLAST analysis: Human, Chimpanzee, Gorilla, Orangutan (100%), Marmoset (94%). Type of Immunogen: Synthetic peptide
Specificity:	Human LRRN4 / C20orf75. BLAST analysis of the peptide immunogen showed no homology with other human proteins, except SH2B1 (44 %).
Predicted Reactivity:	Percent identity with other species by BLAST analysis: Human, Chimpanzee, Gorilla, Orangutan (100%) Marmoset (94%).
Purification:	Immunoaffinity purified

Target Details

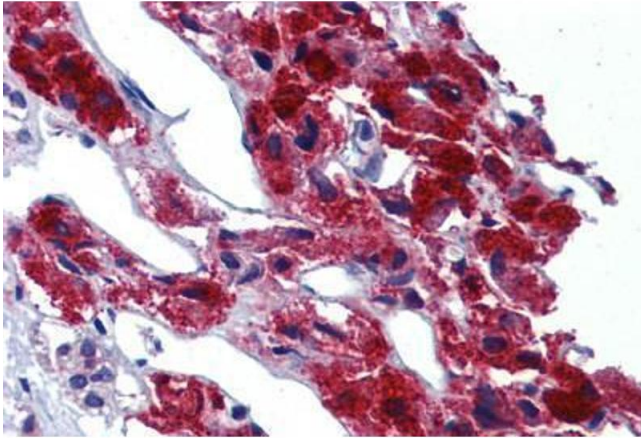
Target:	LRRN4
Alternative Name:	LRRN4 / C20orf75 (LRRN4 Products)
Background:	Name/Gene ID: LRRN4 Synonyms: LRRN4, DJ1056H1.1, Leucine rich repeat neuronal 4, NLRR4, C20orf75, NLRR-4
Gene ID:	164312

Application Details

Application Notes:	Approved: IHC, IHC-P (10 µg/mL) Usage: Immunohistochemistry with formalin-fixed paraffin-embedded tissues requires pretreatment using HIER with citrate buffer.
Comment:	Target Species of Antibody: Human
Restrictions:	For Research Use only

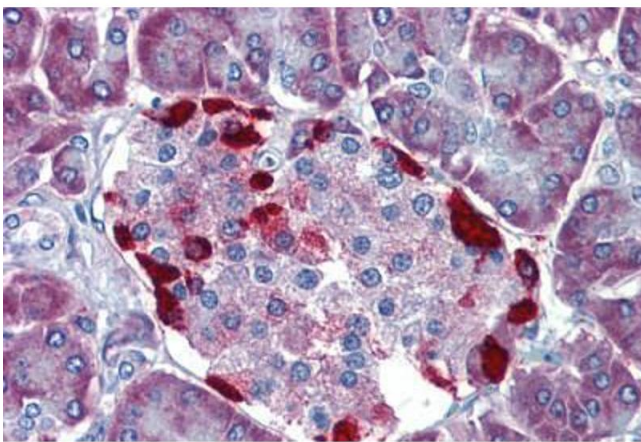
Handling

Format:	Liquid
Concentration:	Lot specific
Buffer:	PBS, less than 0.1 % sodium azide.
Preservative:	Sodium azide
Precaution of Use:	This product contains Sodium azide: a POISONOUS AND HAZARDOUS SUBSTANCE which should be handled by trained staff only.
Storage:	4 °C,-20 °C
Storage Comment:	Aliquot and store undiluted at -20°C or below for up to 1 year. Can be stored undiluted at 4°C for up to 1 month. Avoid freeze-thaw cycles.
Expiry Date:	12 months



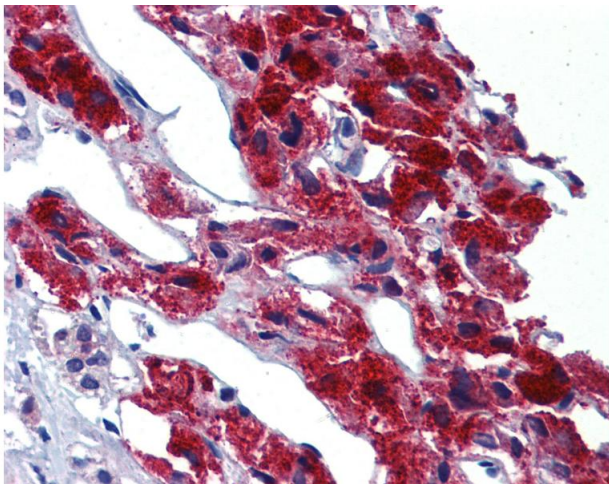
Immunohistochemistry (Formalin-fixed Paraffin-embedded Sections)

Image 1. Adrenal, Human: Formalin-Fixed, Paraffin-Embedded (FFPE)



Immunohistochemistry (Formalin-fixed Paraffin-embedded Sections)

Image 2. Pancreas, Human: Formalin-Fixed, Paraffin-Embedded (FFPE)



Immunohistochemistry

Image 3. Anti-LRRN4 / C20orf75 antibody IHC of human adrenal. Immunohistochemistry of formalin-fixed, paraffin-embedded tissue after heat-induced antigen retrieval.