

Datasheet for ABIN461750
anti-SARM1 antibody (AA 93-292)



[Go to Product page](#)

2 Images

Overview

Quantity:	50 µg
Target:	SARM1
Binding Specificity:	AA 93-292
Reactivity:	Human
Host:	Mouse
Clonality:	Monoclonal
Conjugate:	This SARM1 antibody is un-conjugated
Application:	Immunoprecipitation (IP), Immunohistochemistry (Paraffin-embedded Sections) (IHC (p)), Immunohistochemistry (IHC)

Product Details

Brand:	IHC-plus™
Immunogen:	Recombinant human SARM (aa 93-292). Type of Immunogen: Recombinant protein
Clone:	Sarmy-1
Isotype:	IgG2b
Specificity:	Recognizes human SARM.
Purification:	Protein G purified

Target Details

Target:	SARM1
Alternative Name:	SARM1 / SARM (SARM1 Products)
Background:	Name/Gene ID: SARM1 Synonyms: SARM1, Tir-1 homolog, SARM, KIAA0524, SAMD2
Gene ID:	23098
UniProt:	Q6SZW1
Pathways:	TLR Signaling , Activation of Innate immune Response , Toll-Like Receptors Cascades

Application Details

Application Notes:	Approved: IHC, IHC-P (10 µg/mL), IP (1:200) Usage: Immunohistochemistry: This antibody was validated for use in immunohistochemistry on a panel of 21 formalin-fixed, paraffin-embedded (FFPE) human tissues after heat induced antigen retrieval in pH 6.0 citrate buffer. After incubation with the primary antibody, slides were incubated with biotinylated secondary antibody, followed by alkaline phosphatase-streptavidin and chromogen. The stained slides were evaluated by a pathologist to confirm staining specificity. The optimal working concentration for this antibody was determined to be 10 µg/mL.
Comment:	Target Species of Antibody: Human
Restrictions:	For Research Use only

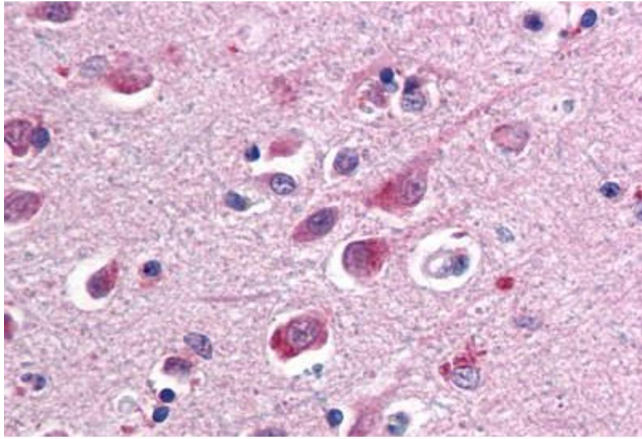
Handling

Format:	Liquid
Concentration:	Lot specific
Buffer:	PBS, 10 % glycerol, 0.02 % sodium azide.
Preservative:	Sodium azide
Precaution of Use:	This product contains Sodium azide: a POISONOUS AND HAZARDOUS SUBSTANCE which should be handled by trained staff only.
Storage:	4 °C, -20 °C

Handling

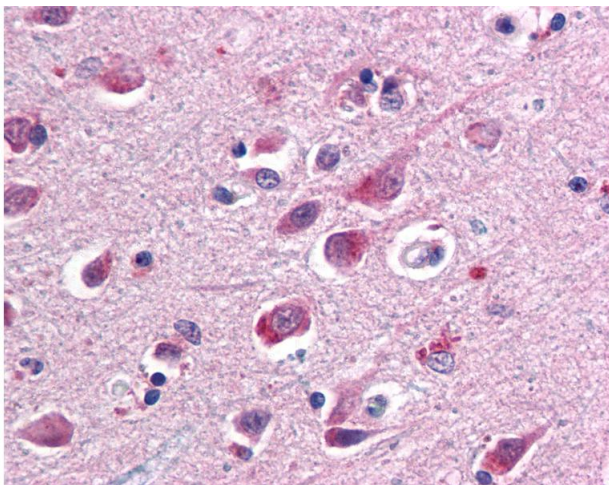
Storage Comment: Short term: 4°C
Long term: -20°C.

Images



Immunohistochemistry (Paraffin-embedded Sections)

Image 1. Human Brain, Cortex (formalin-fixed, paraffin-embedded) stained with SARM1 antibody ABIN461750 at 10 ug/ml followed by biotinylated anti-mouse IgG secondary antibody ABIN481714, alkaline phosphatase-streptavidin and chromogen.



Immunohistochemistry

Image 2. Anti-SARM1 / SARM antibody IHC of human brain, cortex. Immunohistochemistry of formalin-fixed, paraffin-embedded tissue after heat-induced antigen retrieval. Antibody concentration 10 ug/ml.