

Datasheet for ABIN461897  
**anti-ASK1 antibody (C-Term)**

## 3 Images

[Go to Product page](#)

## Overview

Quantity:	0.05 mg
Target:	ASK1 (MAP3K5)
Binding Specificity:	C-Term
Reactivity:	Human, Mouse
Host:	Rabbit
Clonality:	Polyclonal
Conjugate:	This ASK1 antibody is un-conjugated
Application:	Western Blotting (WB), Immunohistochemistry (IHC), ELISA, Immunohistochemistry (Paraffin-embedded Sections) (IHC (p)), Immunocytochemistry (ICC)

## Product Details

Brand:	IHC-plus™
Isotype:	IgG
Purification:	Immunoaffinity purified

## Target Details

Target:	ASK1 (MAP3K5)
Alternative Name:	MAP3K5 / ASK1 ( <a href="#">MAP3K5 Products</a> )
Background:	Name/Gene ID: MAP3K5 Subfamily: MAP3K Family: Protein Kinase

## Target Details

Synonyms: MAP3K5, ASK-1, ASK1, MEKK5, MEK kinase 5, MEKK 5, MAPK/ERK kinase kinase 5, MAPKKK5, MAP/ERK kinase kinase 5

Gene ID: 4217

UniProt: [Q99683](#)

Pathways: [MAPK Signaling](#), [Positive Regulation of Endopeptidase Activity](#), [Unfolded Protein Response](#)

## Application Details

Application Notes: Approved: ELISA, ICC, IHC, IHC-P (5 µg/mL), WB

Usage: Immunohistochemistry: This antibody was validated for use in immunohistochemistry on a panel of 21 formalin-fixed, paraffin-embedded (FFPE) human tissues after heat induced antigen retrieval in pH 6.0 citrate buffer. After incubation with the primary antibody, slides were incubated with biotinylated secondary antibody, followed by alkaline phosphatase-streptavidin and chromogen. The stained slides were evaluated by a pathologist to confirm staining specificity. The optimal working concentration for this antibody was determined to be 5 µg/mL.

Comment: Target Species of Antibody: Human

Restrictions: For Research Use only

## Handling

Format: Liquid

Concentration: Lot specific

Buffer: PBS, 0.02 % sodium azide.

Preservative: Sodium azide

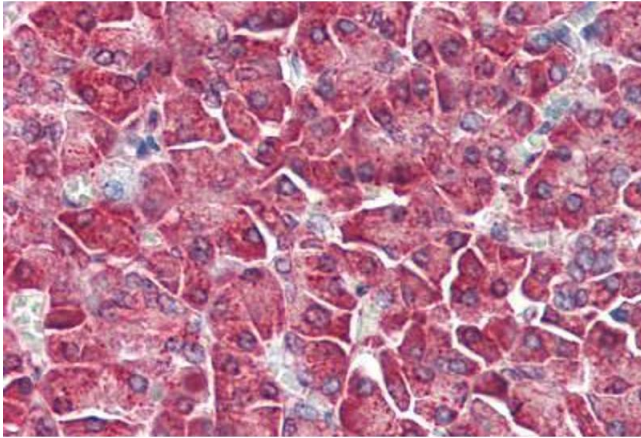
Precaution of Use: This product contains Sodium azide: a POISONOUS AND HAZARDOUS SUBSTANCE which should be handled by trained staff only.

Handling Advice: avoid freeze thaw cycles. Store undiluted.

Storage: 4 °C, -20 °C

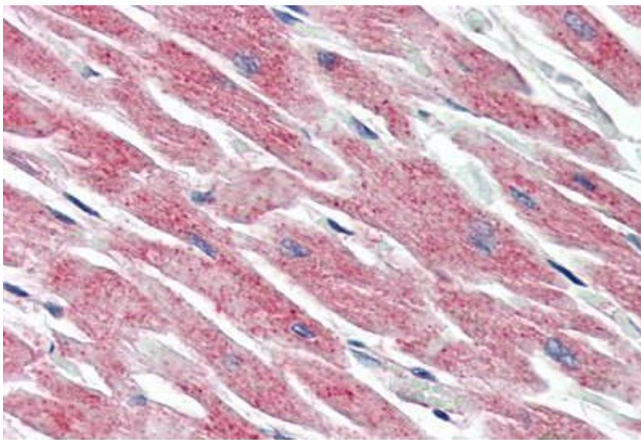
Storage Comment: Store at 4°C for 3 months and -20°C, stable for up to 1 year. Avoid repeated freeze-thaw cycles.

Expiry Date: 12 months



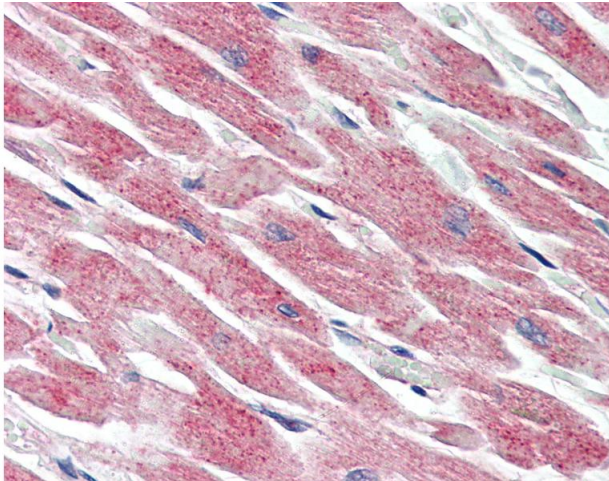
#### Immunohistochemistry (Paraffin-embedded Sections)

**Image 1.** Human Pancreas (formalin-fixed, paraffin-embedded) stained with MAP3K5 antibody ABIN461897 at 5 ug/ml followed by biotinylated goat anti-rabbit IgG secondary antibody ABIN481713, alkaline phosphatase-streptavidin and chromogen.



#### Immunohistochemistry (Paraffin-embedded Sections)

**Image 2.** Human Heart (formalin-fixed, paraffin-embedded) stained with MAP3K5 antibody ABIN461897 at 5 ug/ml followed by biotinylated goat anti-rabbit IgG secondary antibody ABIN481713, alkaline phosphatase-streptavidin and chromogen.



#### Immunohistochemistry

**Image 3.** Anti-MAP3K5 / ASK1 antibody IHC of human heart. Immunohistochemistry of formalin-fixed, paraffin-embedded tissue after heat-induced antigen retrieval. Antibody concentration 5 ug/ml.