

Datasheet for ABIN461956
anti-SRSF1 antibody (N-Term)

3 Images

[Go to Product page](#)

Overview

Quantity:	50 µg
Target:	SRSF1
Binding Specificity:	N-Term
Reactivity:	Human, Mouse, Rat
Host:	Mouse
Clonality:	Monoclonal
Application:	Western Blotting (WB), Immunohistochemistry (IHC), Immunofluorescence (IF), Immunohistochemistry (Paraffin-embedded Sections) (IHC (p))

Product Details

Brand:	IHC-plus™
Immunogen:	Recombinant SF2/ASF protein. Type of Immunogen: Recombinant protein
Isotype:	IgG1
Specificity:	Specific for the N-terminal portion (aa1-97) of the SF2/ASF protein comprising the RNA-recognition motif (RRM1). Reactivity is not affected by phosphorylation state of SF2/ASF. On Western blots, a band of ~33kD is seen with doublet or triplet bands sometimes evident due to phosphorylation differences. SF2/ASF is highly conserved (e. g. mouse and human protein are 100 % identical) so reactivity with other species is likely. Please note, however, that cross-reactivity in non-target species varies and cannot be guaranteed.

Product Details

Purification: Protein A purified

Target Details

Target: SRSF1

Alternative Name: SFRS1 / SF2 ([SRSF1 Products](#))

Background: Name/Gene ID: SRSF1

Synonyms: SRSF1, Alternative-splicing factor 1, ASF, SF2, SF2p33, SFRS1, Splicing factor 2, ASF-1, SR splicing factor 1, SRp30a

Gene ID: 6426

UniProt: [Q07955](#)

Pathways: [Ribonucleoprotein Complex Subunit Organization](#)

Application Details

Application Notes: Approved: IF, IHC, IHC-P (10 µg/mL), WB (1 - 3 µg/mL)

Usage: Immunohistochemistry: This antibody was validated for use in immunohistochemistry on a panel of 21 formalin-fixed, paraffin-embedded (FFPE) human tissues after heat induced antigen retrieval in pH 6.0 citrate buffer. After incubation with the primary antibody, slides were incubated with biotinylated secondary antibody, followed by alkaline phosphatase-streptavidin and chromogen. The stained slides were evaluated by a pathologist to confirm staining specificity. The optimal working concentration for this antibody was determined to be 10 µg/mL. Western Blot: 1-3 µg/mL. A band of ~33kD is seen with doublet or triplet bands sometimes evident due to phosphorylation differences.

Comment: Target Species of Antibody: Human

Restrictions: For Research Use only

Handling

Format: Liquid

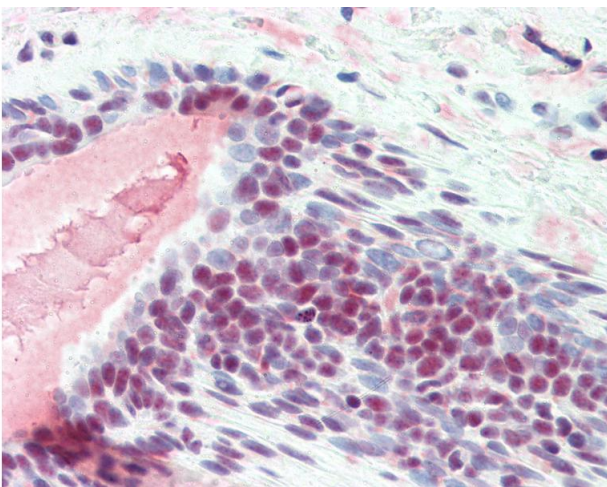
Concentration: Lot specific

Buffer: PBS, pH 7.4, 0.1 % sodium azide.

Handling

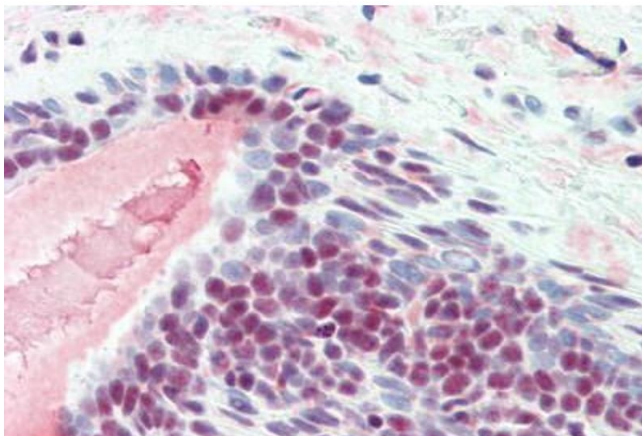
Preservative:	Sodium azide
Precaution of Use:	This product contains Sodium azide: a POISONOUS AND HAZARDOUS SUBSTANCE which should be handled by trained staff only.
Handling Advice:	avoid freeze thaw cycles.
Storage:	4 °C, -20 °C
Storage Comment:	Short term 4°C, long term aliquot and store at -20°C, avoid freeze-thaw cycles.

Images



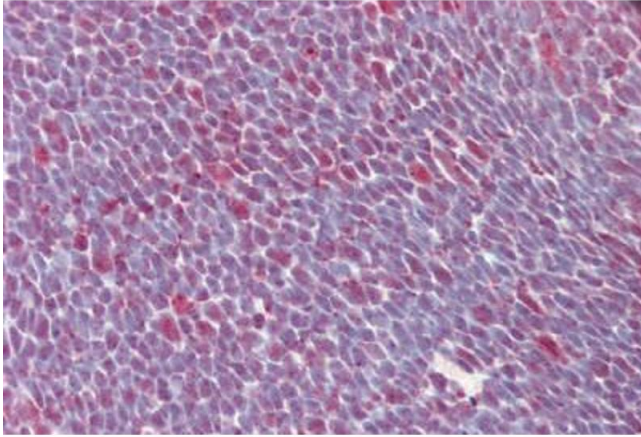
Immunohistochemistry

Image 1. Anti-SF2 antibody IHC of human breast. Immunohistochemistry of formalin-fixed, paraffin-embedded tissue after heat-induced antigen retrieval. Antibody concentration 10 ug/ml.



Immunohistochemistry (Paraffin-embedded Sections)

Image 2. Human Breast (formalin-fixed, paraffin-embedded) stained with SFRS1 antibody ABIN461956 at 10 ug/ml followed by biotinylated anti-mouse IgG secondary antibody ABIN481714, alkaline phosphatase-streptavidin and chromogen.



Immunohistochemistry (Paraffin-embedded Sections)

Image 3. Human Thymus (formalin-fixed, paraffin-embedded) stained with SFRS1 antibody ABIN461956 at 10 ug/ml followed by biotinylated anti-mouse IgG secondary antibody ABIN481714, alkaline phosphatase-streptavidin and chromogen.