

Datasheet for ABIN461970

anti-F13A1 antibody

2 Images



[Go to Product page](#)

Overview

Quantity:	50 µg
Target:	F13A1
Reactivity:	Human
Host:	Sheep
Clonality:	Polyclonal
Conjugate:	This F13A1 antibody is un-conjugated
Application:	ELISA, Immunohistochemistry (IHC), Immunohistochemistry (Paraffin-embedded Sections) (IHC (p)), Immunoelectrophoresis (IEP)

Product Details

Brand:	IHC-plus™
Immunogen:	Factor XIII subunit A purified from human plasma. Type of Immunogen: Purified protein
Isotype:	IgG
Specificity:	Specific for Factor XIII as determined by immunoelectrophoresis and ELISA.
Purification:	Immunoaffinity purified

Target Details

Target:	F13A1
Alternative Name:	F13A1 / Factor XIIIa (F13A1 Products)

Target Details

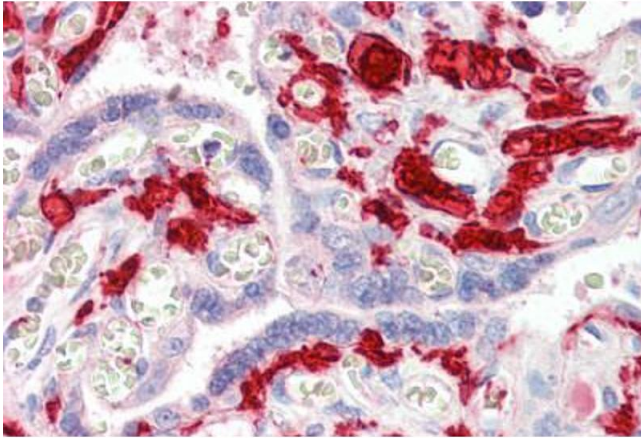
Background:	Name/Gene ID: F13A1
	Synonyms: F13A1, Coagulation factor XIIIa, Factor XIIIa, Fibrinolygase, FSF, A subunit, Transglutaminase. plasma, Transglutaminase A chain, F13A, TGASE
Gene ID:	2162
UniProt:	P00488

Application Details

Application Notes:	Approved: ELISA, IE, IHC, IHC-P (5 µg/mL)
	Usage: Immunohistochemistry: This antibody was validated for use in immunohistochemistry on a panel of 21 formalin-fixed, paraffin-embedded (FFPE) human tissues after heat induced antigen retrieval in pH 6.0 citrate buffer. After incubation with the primary antibody, slides were incubated with biotinylated secondary antibody, followed by alkaline phosphatase-streptavidin and chromogen. The stained slides were evaluated by a pathologist to confirm staining specificity. The optimal working concentration for this antibody was determined to be 5 µg/mL.
Comment:	Target Species of Antibody: Human
Restrictions:	For Research Use only

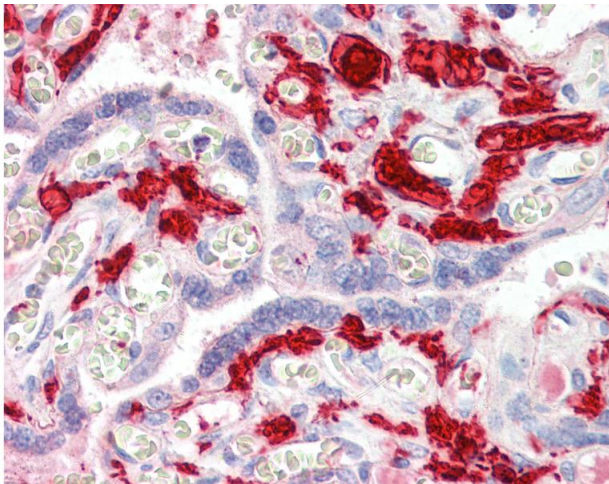
Handling

Format:	Liquid
Concentration:	Lot specific
Buffer:	0.01 M HEPES, pH 7.4, 0.15 M sodium chloride, 50 % glycerol. No preservatives added.
Preservative:	Without preservative
Handling Advice:	Avoid repeat freeze-thaw cycles.
Storage:	4 °C, -20 °C
Storage Comment:	Short term: 4°C. Long term: Store at -20°C. Avoid freeze-thaw cycles.



Immunohistochemistry (Paraffin-embedded Sections)

Image 1. Human Placenta (formalin-fixed, paraffin-embedded) stained with F13A1 antibody ABIN461970 at 5 ug/ml followed by biotinylated secondary antibody, alkaline phosphatase-streptavidin and chromogen.



Immunohistochemistry

Image 2. Anti-F13A1 / Factor XIIIa antibody IHC of human placenta. Immunohistochemistry of formalin-fixed, paraffin-embedded tissue after heat-induced antigen retrieval. Antibody concentration 5 ug/ml.