

Datasheet for ABIN461987
anti-C6 antibody (C-Term)



[Go to Product page](#)

3 Images

Overview

Quantity:	0.05 mg
Target:	C6
Binding Specificity:	C-Term
Reactivity:	Human
Host:	Mouse
Clonality:	Monoclonal
Conjugate:	This C6 antibody is un-conjugated
Application:	Immunohistochemistry (IHC), ELISA, Flow Cytometry (FACS), Immunohistochemistry (Paraffin-embedded Sections) (IHC (p))

Product Details

Brand:	IHC-plus™
Immunogen:	Purified human C6.
Clone:	056B-214-2-4-2
Isotype:	IgG1
Specificity:	Recognizes complement component 6 (C6) a 104 kD member of the complement C6/C7/C8/C9 family present in blood serum. The factor I modules of C6 bind the C terminus of the C5b alpha-chain, anchoring the molecule to the membrane and also binds complement component 7. This enables the formation of the C5b-7 precursor complex. C5b-7 then functions as a receptor for components C8 and C9 which form the complement membrane attack complex (MAC). Deficiency of C6 results in susceptibility to bacterial infection.

Product Details

Recognizes MAC.

Purification: Protein A purified

Target Details

Target: C6

Alternative Name: Complement C6 ([C6 Products](#))

Background: Name/Gene ID: C6

Synonyms: C6, Complement component C6, Complement C6, Complement component 6

Gene ID: 729

UniProt: [P13671](#)

Application Details

Application Notes: Approved: ELISA, Flo, IHC, IHC-P (10 µg/mL)

Usage: Immunohistochemistry: This antibody was validated for use in immunohistochemistry on a panel of 21 formalin-fixed, paraffin-embedded (FFPE) human tissues after heat induced antigen retrieval in pH 6.0 citrate buffer. After incubation with the primary antibody, slides were incubated with biotinylated secondary antibody, followed by alkaline phosphatase-streptavidin and chromogen. The stained slides were evaluated by a pathologist to confirm staining specificity. The optimal working concentration for this antibody was determined to be 10 µg/mL. Histology Positive Control Tissue: Kidney from post streptococcal glomerulonephritis patients.

Comment: Target Species of Antibody: Human

Restrictions: For Research Use only

Handling

Format: Liquid

Concentration: Lot specific

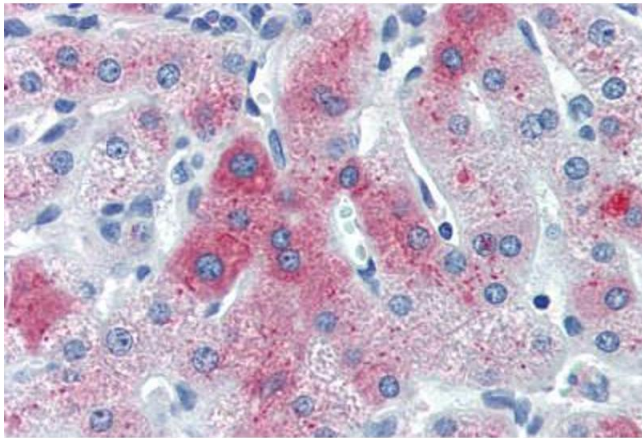
Buffer: Borate buffered saline, 0.09 % sodium azide. Sourced in Ascites.

Preservative: Sodium azide

Handling

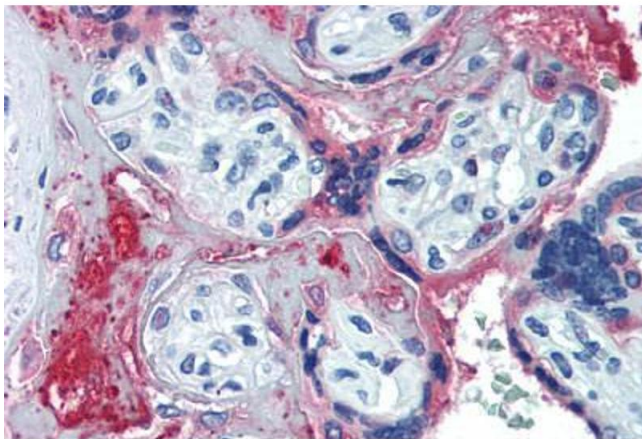
Precaution of Use:	This product contains Sodium azide: a POISONOUS AND HAZARDOUS SUBSTANCE which should be handled by trained staff only.
Handling Advice:	Avoid repeated freezing and thawing. Store undiluted.
Storage:	4 °C,-20 °C
Storage Comment:	4°C or -20°C, Avoid freeze-thaw cycles. Store undiluted.

Images



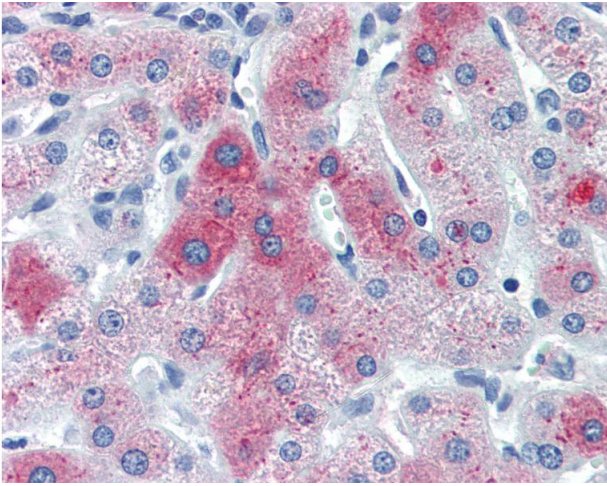
Immunohistochemistry (Paraffin-embedded Sections)

Image 1. Human Liver (formalin-fixed, paraffin-embedded) stained with C6 antibody ABIN461987 at 10 ug/ml followed by biotinylated anti-mouse IgG secondary antibody ABIN481714, alkaline phosphatase-streptavidin and chromogen.



Immunohistochemistry (Paraffin-embedded Sections)

Image 2. Human Placenta (formalin-fixed, paraffin-embedded) stained with C6 antibody ABIN461987 at 10 ug/ml followed by biotinylated anti-mouse IgG secondary antibody ABIN481714, alkaline phosphatase-streptavidin and chromogen.



Immunohistochemistry

Image 3. Anti-C6 / Complement C6 antibody IHC of human liver. Immunohistochemistry of formalin-fixed, paraffin-embedded tissue after heat-induced antigen retrieval. Antibody concentration 10 ug/ml.