

Datasheet for ABIN462073  
**anti-SLC29A1 antibody (AA 234-263)**[Go to Product page](#)

## 2 Images

## Overview

Quantity:	100 µL
Target:	SLC29A1
Binding Specificity:	AA 234-263
Reactivity:	Human, Mouse
Host:	Rabbit
Clonality:	Polyclonal
Conjugate:	This SLC29A1 antibody is un-conjugated
Application:	Western Blotting (WB), Immunohistochemistry (IHC), Immunohistochemistry (Paraffin-embedded Sections) (IHC (p))

## Product Details

Brand:	IHC-plus™
Specificity:	This ENT1 antibody is generated from rabbits immunized with a KLH conjugated synthetic peptide between 234-263 amino acids from the Central region of rat ENT1(O54698).
Purification:	Protein A purified

## Target Details

Target:	SLC29A1
Alternative Name:	SLC29A1 / ENT1 ( <a href="#">SLC29A1 Products</a> )
Background:	Name/Gene ID: SLC29A1 Subfamily: Equilibrative nucleoside transporter

## Target Details

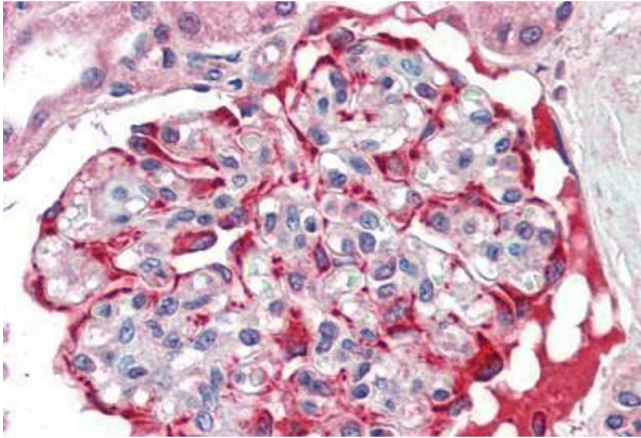
	Family: Transporter
	Synonyms: SLC29A1, ENT1, HENT1
Gene ID:	2030
UniProt:	<a href="#">Q99808</a>
Pathways:	<a href="#">Carbohydrate Homeostasis</a> , <a href="#">Synaptic Membrane</a>

## Application Details

Application Notes:	Approved: IHC, IHC-P (10 µg/mL), WB (1:1000)  Usage: Immunohistochemistry: This antibody was validated for use in immunohistochemistry on a panel of 21 formalin-fixed, paraffin-embedded (FFPE) human tissues after heat induced antigen retrieval in pH 6.0 citrate buffer. After incubation with the primary antibody, slides were incubated with biotinylated secondary antibody, followed by alkaline phosphatase-streptavidin and chromogen. The stained slides were evaluated by a pathologist to confirm staining specificity. The optimal working concentration for this antibody was determined to be 10 µg/mL.
Comment:	Target Species of Antibody: Human
Restrictions:	For Research Use only

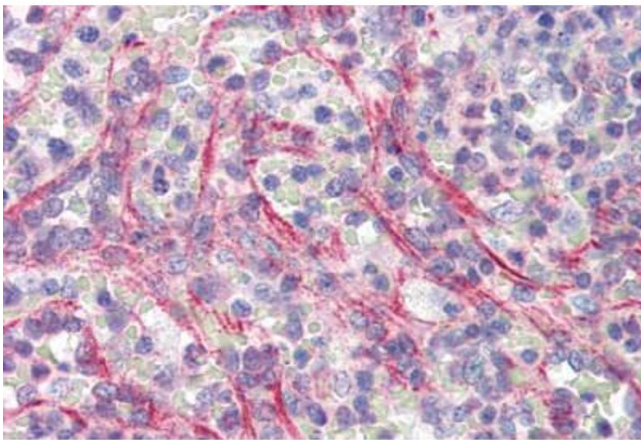
## Handling

Format:	Liquid
Concentration:	Lot specific
Buffer:	PBS, 0.09 % sodium azide
Preservative:	Sodium azide
Precaution of Use:	This product contains Sodium azide: a POISONOUS AND HAZARDOUS SUBSTANCE which should be handled by trained staff only.
Storage:	4 °C, -20 °C
Storage Comment:	Maintain refrigerated at 2-8°C for up to 6 months. For long term storage store at -20°C.
Expiry Date:	6 months



#### Immunohistochemistry (Paraffin-embedded Sections)

**Image 1.** Human Kidney (formalin-fixed, paraffin-embedded) stained with SLC29A1 antibody ABIN462073 followed by biotinylated goat anti-rabbit IgG secondary antibody ABIN481713, alkaline phosphatase-streptavidin and chromogen.



#### Immunohistochemistry (Paraffin-embedded Sections)

**Image 2.** Human Spleen (formalin-fixed, paraffin-embedded) stained with SLC29A1 antibody ABIN462073 followed by biotinylated goat anti-rabbit IgG secondary antibody ABIN481713, alkaline phosphatase-streptavidin and chromogen.