



Datasheet for ABIN462085  
**anti-BAI3 antibody (AA 1506-1522)**



[Go to Product page](#)

3 Images

Overview

Quantity:	50 µg
Target:	BAI3
Binding Specificity:	AA 1506-1522
Reactivity:	Human, Mouse, Rat, Monkey, Chicken, Rabbit, Bat, Dog, Xenopus laevis
Host:	Rabbit
Clonality:	Polyclonal
Conjugate:	This BAI3 antibody is un-conjugated
Application:	Immunohistochemistry (IHC), ELISA, Immunohistochemistry (Paraffin-embedded Sections) (IHC (p))

Product Details

Brand:	IHC-plus™
Immunogen:	Synthetic peptide from human BAI3. Percent identity by BLAST analysis: Human, Gorilla, Gibbon, Marmoset, Mouse, Rat, Elephant, Panda, Dog, Bat, Rabbit, Opossum, Chicken, Lizard, Xenopus (100%), Bovine, Horse, Pufferfish, Zebrafish (94%), Stickleback (88%).  Type of Immunogen: Synthetic peptide
Specificity:	KLH conjugated synthetic peptide comprising amino acids 1506 - 1522 [CLNLPLDVQEGDFQTEV] of the human brain-specific angiogenesis inhibitor 3 (BAI3) protein.
Predicted Reactivity:	Percent identity by BLAST analysis: Human, Gorilla, Gibbon, Marmoset, Mouse, Rat, Elephant, Panda, Dog, Bat, Rabbit, Opossum, Chicken, Lizard, Xenopus (100%) Bovine, Horse, Pufferfish,

## Product Details

---

Zebrafish (94%) Stickleback (88%).

Purification: Protein G purified

## Target Details

---

Target: BAI3

Alternative Name: ADGRB3 / BAI3 ([BAI3 Products](#))

Background: Name/Gene ID: ADGRB3

Subfamily: Orphan-B

Family: GPCR

Synonyms: ADGRB3, KIAA0550, BAI3

Gene ID: 577

UniProt: [O60242](#)

## Application Details

---

Application Notes: Approved: ELISA (1:1000), IHC, IHC-P (15 µg/mL)

Usage: Immunohistochemistry: This antibody was validated for use in immunohistochemistry on a panel of 21 formalin-fixed, paraffin-embedded (FFPE) human tissues after heat induced antigen retrieval in pH 6.0 citrate buffer. After incubation with the primary antibody, slides were incubated with biotinylated secondary antibody, followed by alkaline phosphatase-streptavidin and chromogen. The stained slides were evaluated by a pathologist to confirm staining specificity. The optimal working concentration for this antibody was determined to be 15 µg/mL.

Comment: Target Species of Antibody: Human

Restrictions: For Research Use only

## Handling

---

Format: Liquid

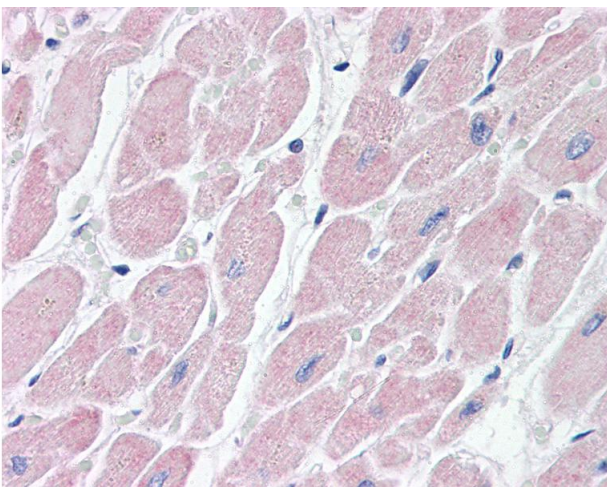
Concentration: Lot specific

Buffer: PBS, 0.09 % sodium azide.

## Handling

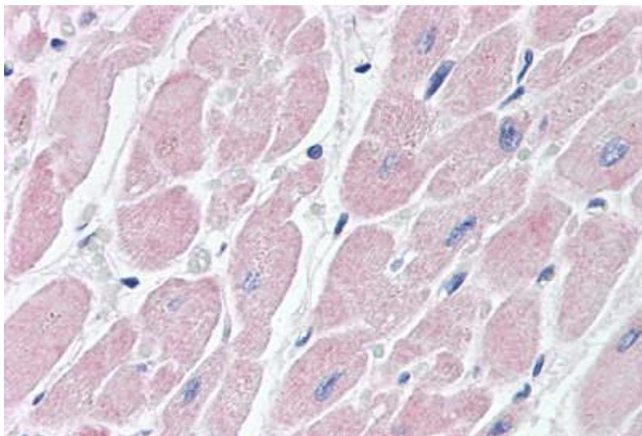
Preservative:	Sodium azide
Precaution of Use:	This product contains Sodium azide: a POISONOUS AND HAZARDOUS SUBSTANCE which should be handled by trained staff only.
Handling Advice:	Avoid repeat freeze-thaw cycles.
Storage:	4 °C,-20 °C
Storage Comment:	Short term: 4°C. Long term: Store at -20°C. Avoid freeze-thaw cycles.

## Images



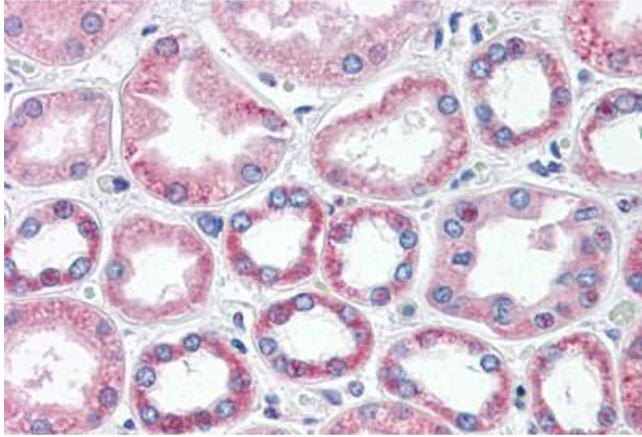
### Immunohistochemistry

**Image 1.** Anti-BAI3 antibody IHC of human heart. Immunohistochemistry of formalin-fixed, paraffin-embedded tissue after heat-induced antigen retrieval. Antibody concentration 15 ug/ml.



### Immunohistochemistry (Paraffin-embedded Sections)

**Image 2.** Human Heart (formalin-fixed, paraffin-embedded) stained with BAI3 antibody ABIN462085 followed by biotinylated goat anti-rabbit IgG secondary antibody ABIN481713, alkaline phosphatase-streptavidin and chromogen.



### Immunohistochemistry (Paraffin-embedded Sections)

**Image 3.** Human Kidney (formalin-fixed, paraffin-embedded) stained with BAI3 antibody ABIN462085 followed by biotinylated goat anti-rabbit IgG secondary antibody ABIN481713, alkaline phosphatase-streptavidin and chromogen.