



[Go to Product page](#)

Datasheet for ABIN462087

## anti-NOTCH2 antibody (AA 2457-2471)

### 4 Images

#### Overview

Quantity:	50 µg
Target:	NOTCH2
Binding Specificity:	AA 2457-2471
Reactivity:	Human, Monkey
Host:	Rabbit
Clonality:	Polyclonal
Conjugate:	This NOTCH2 antibody is un-conjugated
Application:	ELISA, Immunohistochemistry (IHC), Immunohistochemistry (Paraffin-embedded Sections) (IHC (p))

#### Product Details

Brand:	IHC-plus™
Immunogen:	Synthetic peptide from human NOTCH2. Percent identity by BLAST analysis: Human, Gorilla, Gibbon, Monkey, Tamarin (100%), Mouse, Rat, Hamster, Elephant, Rabbit (93%), Bovine, Dog, Pig (87%), Panda, Bat (80%).  Type of Immunogen: Synthetic peptide
Specificity:	KLH conjugated synthetic peptide comprising amino acids 2457 - 2471 [THMSEPPHNNMQVYA] of the human NOTCH homolog 2 (NOTCH2) protein.
Predicted Reactivity:	Percent identity by BLAST analysis: Human, Gorilla, Gibbon, Monkey, Tamarin (100%) Mouse, Rat, Hamster, Elephant, Rabbit (93%) Bovine, Dog, Pig (87%) Panda, Bat (80%).

## Product Details

---

Purification: Protein G purified

## Target Details

---

Target: NOTCH2

Alternative Name: NOTCH2 / NOTCH-2 ([NOTCH2 Products](#))

Background: Name/Gene ID: NOTCH2

Synonyms: NOTCH2, AGS2, HN2, Notch (Drosophila) homolog 2, Notch homolog 2 (Drosophila), Notch 2, Notch homolog 2, HJCYS

Gene ID: 4853

UniProt: [Q04721](#)

Pathways: [Notch Signaling](#), [Stem Cell Maintenance](#)

## Application Details

---

Application Notes: Approved: ELISA (1:1000), IHC, IHC-P (5 µg/mL)

Usage: Immunohistochemistry: This antibody was validated for use in immunohistochemistry on a panel of 21 formalin-fixed, paraffin-embedded (FFPE) human tissues after heat induced antigen retrieval in pH 6.0 citrate buffer. After incubation with the primary antibody, slides were incubated with biotinylated secondary antibody, followed by alkaline phosphatase-streptavidin and chromogen. The stained slides were evaluated by a pathologist to confirm staining specificity. The optimal working concentration for this antibody was determined to be 5 µg/mL.

Comment: Target Species of Antibody: Human

Restrictions: For Research Use only

## Handling

---

Format: Liquid

Concentration: Lot specific

Buffer: PBS, 0.09 % sodium azide.

Preservative: Sodium azide

Precaution of Use: This product contains Sodium azide: a POISONOUS AND HAZARDOUS SUBSTANCE which

## Handling

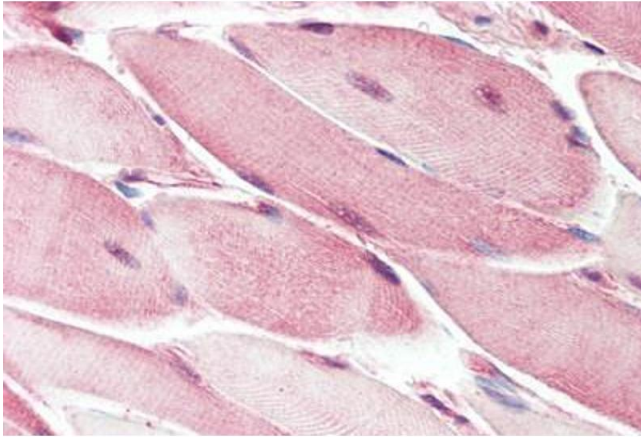
should be handled by trained staff only.

Handling Advice: Avoid repeat freeze-thaw cycles.

Storage: 4 °C, -20 °C

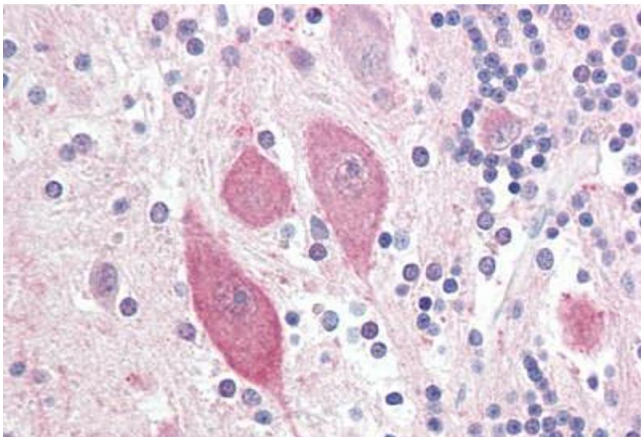
Storage Comment: Short term: 4°C. Long term: Store at -20°C. Avoid freeze-thaw cycles.

## Images



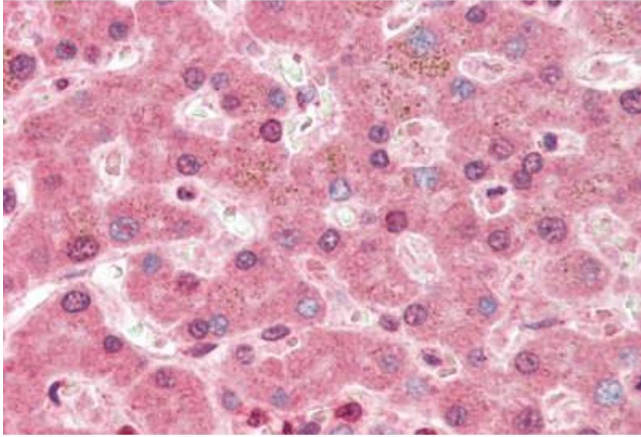
### Immunohistochemistry (Paraffin-embedded Sections)

**Image 1.** Human Skeletal Muscle (formalin-fixed, paraffin-embedded) stained with NOTCH2 antibody ABIN462087 followed by biotinylated goat anti-rabbit IgG secondary antibody ABIN481713, alkaline phosphatase-streptavidin and chromogen.



### Immunohistochemistry (Paraffin-embedded Sections)

**Image 2.** Human Brain, Cerebellum (formalin-fixed, paraffin-embedded) stained with NOTCH2 antibody ABIN462087 followed by biotinylated goat anti-rabbit IgG secondary antibody ABIN481713, alkaline phosphatase-streptavidin and chromogen.



### Immunohistochemistry (Paraffin-embedded Sections)

**Image 3.** Human Liver (formalin-fixed, paraffin-embedded) stained with NOTCH2 antibody ABIN462087 followed by biotinylated goat anti-rabbit IgG secondary antibody ABIN481713, alkaline phosphatase-streptavidin and chromogen.

Please check the [product details page](#) for more images. Overall 4 images are available for ABIN462087.