

Datasheet for ABIN462127

anti-MAP2 antibody

4 Images

[Go to Product page](#)

Overview

Quantity:	50 µg
Target:	MAP2
Reactivity:	Human, Mouse, Rat, Rabbit
Host:	Mouse
Clonality:	Monoclonal
Conjugate:	This MAP2 antibody is un-conjugated
Application:	Western Blotting (WB), Immunohistochemistry (IHC), Immunohistochemistry (Paraffin-embedded Sections) (IHC (p))

Product Details

Brand:	IHC-plus™
Immunogen:	Purified rat brain microtubules MAP2. Type of Immunogen: Purified protein
Clone:	5F9
Isotype:	IgG1
Specificity:	Recognizes rat MAP2 at ~300kD. Species cross-reactivity: Human, rabbit and mouse.
Purification:	Protein G purified

Target Details

Target:	MAP2
---------	------

Target Details

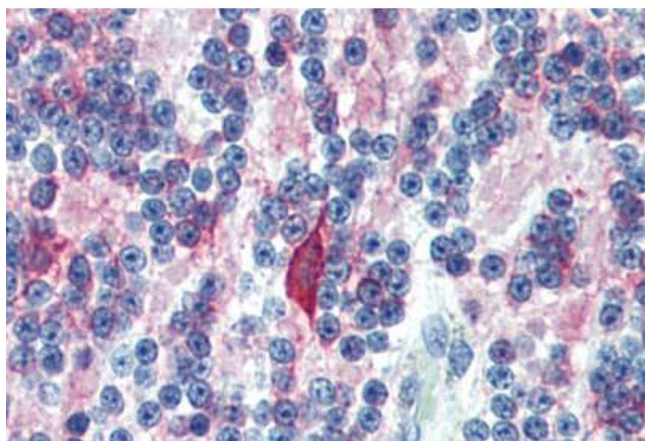
Alternative Name:	MAP2 / MAP-2 (MAP2 Products)
Background:	Name/Gene ID: MAP2 Synonyms: MAP2, MAP2C, MAP-2, MAP2A, MAP2B
Gene ID:	4133
UniProt:	P11137

Application Details

Application Notes:	Approved: IHC, IHC-P (10 µg/mL), WB (0.5 - 2 µg/mL) Usage: Immunohistochemistry: This antibody was validated for use in immunohistochemistry on a panel of 21 formalin-fixed, paraffin-embedded (FFPE) human tissues after heat induced antigen retrieval in pH 6.0 citrate buffer. After incubation with the primary antibody, slides were incubated with biotinylated secondary antibody, followed by alkaline phosphatase-streptavidin and chromogen. The stained slides were evaluated by a pathologist to confirm staining specificity. The optimal working concentration for this antibody was determined to be 10 µg/mL.
Comment:	Target Species of Antibody: Rat
Restrictions:	For Research Use only

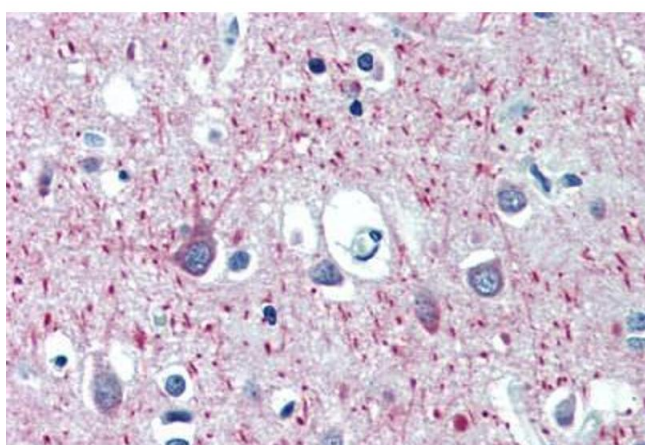
Handling

Format:	Liquid
Concentration:	Lot specific
Buffer:	Tris-glycine, pH 7.4, 0.05 % sodium azide.
Preservative:	Sodium azide
Precaution of Use:	This product contains Sodium azide: a POISONOUS AND HAZARDOUS SUBSTANCE which should be handled by trained staff only.
Handling Advice:	Avoid freeze-thaw cycles.
Storage:	4 °C,-20 °C
Storage Comment:	Short term: 4°C. Long term: Store at -20°C. Avoid freeze-thaw cycles.



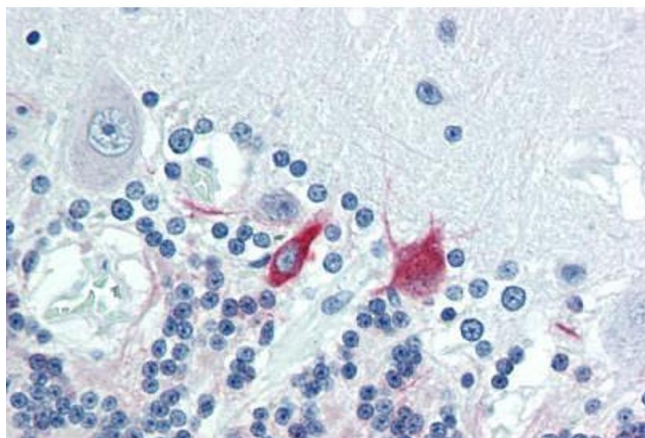
Immunohistochemistry (Paraffin-embedded Sections)

Image 1. Human Brain, Cerebellum (formalin-fixed, paraffin-embedded) stained with MAP2 antibody ABIN462127 followed by biotinylated anti-mouse IgG secondary antibody ABIN481714, alkaline phosphatase-streptavidin and chromogen.



Immunohistochemistry (Paraffin-embedded Sections)

Image 2. Human Brain, Cortex (formalin-fixed, paraffin-embedded) stained with MAP2 antibody ABIN462127 followed by biotinylated anti-mouse IgG secondary antibody ABIN481714, alkaline phosphatase-streptavidin and chromogen.



Immunohistochemistry (Paraffin-embedded Sections)

Image 3. Human Brain, Cerebellum (formalin-fixed, paraffin-embedded) stained with MAP2 antibody ABIN462127 followed by biotinylated anti-mouse IgG secondary antibody ABIN481714, alkaline phosphatase-streptavidin and chromogen.

Please check the [product details page](#) for more images. Overall 4 images are available for ABIN462127.