

Datasheet for ABIN462165  
**anti-FOSL1 antibody (AA 130-179)**



[Go to Product page](#)

2 Images

## Overview

Quantity:	50 µg
Target:	FOSL1
Binding Specificity:	AA 130-179
Reactivity:	Human, Rat, Mouse, Dog, Cow, Horse, Guinea Pig, Zebrafish (Danio rerio), Bat, Monkey
Host:	Rabbit
Clonality:	Polyclonal
Conjugate:	This FOSL1 antibody is un-conjugated
Application:	Western Blotting (WB), Immunohistochemistry (IHC), Immunohistochemistry (Paraffin-embedded Sections) (IHC (p))

## Product Details

Brand:	IHC-plus™
Immunogen:	Synthetic peptide located between aa130-179 of human FOSL1 (P15407, NP_005429). Percent identity by BLAST analysis: Human, Chimpanzee, Gorilla, Gibbon, Monkey, Galago, Marmoset, Mouse, Rat, Elephant, Dog, Bovine, Bat, Horse, Guinea pig (100%), Rabbit, Pig, Platypus (92%), Sheep, Hamster, Panda, Cat, Opossum, Xenopus, Stickleback, Pufferfish, Zebrafish (84%).  Type of Immunogen: Synthetic peptide
Isotype:	IgG
Specificity:	Human FOSL1 / FRA1
Predicted Reactivity:	Percent identity by BLAST analysis: Human, Mouse, Rat, Dog, Bovine (100%) Rabbit, Pig (92%)

## Product Details

---

Zebrafish (84%).

Purification: Immunoaffinity purified

## Target Details

---

Target: FOSSL1

Alternative Name: FRA-1 / FOSSL1 ([FOSSL1 Products](#))

Background: Name/Gene ID: FOSSL1

Synonyms: FOSSL1, FOS-like antigen 1, Fos-related antigen 1, FRA, FOS-like antigen-1, FRA1, Fra-1

Gene ID: 8061

NCBI Accession: [NP\\_005429](#)

UniProt: [P15407](#)

## Application Details

---

Application Notes: Approved: IHC, IHC-P (5 µg/mL), WB (0.2 - 1 µg/mL)

Usage: Immunohistochemistry: This antibody was validated for use in immunohistochemistry on a panel of 21 formalin-fixed, paraffin-embedded (FFPE) human tissues after heat induced antigen retrieval in pH 6.0 citrate buffer. After incubation with the primary antibody, slides were incubated with biotinylated secondary antibody, followed by alkaline phosphatase-streptavidin and chromogen. The stained slides were evaluated by a pathologist to confirm staining specificity. The optimal working concentration for this antibody was determined to be 5 µg/mL.

Comment: Target Species of Antibody: Human

Restrictions: For Research Use only

## Handling

---

Format: Lyophilized

Reconstitution: Distilled water

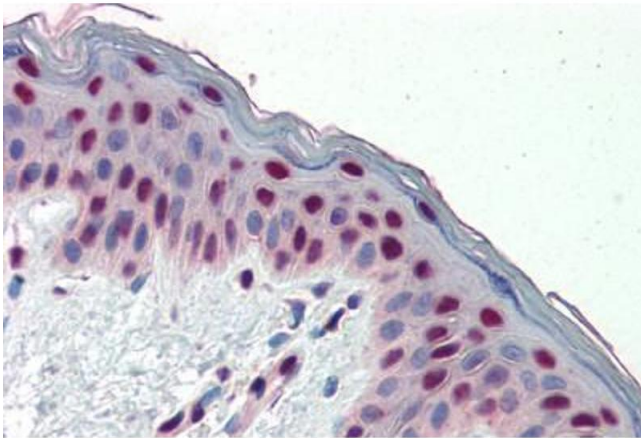
Concentration: Lot specific

Buffer: Lyophilized from PBS with 2 % sucrose

## Handling

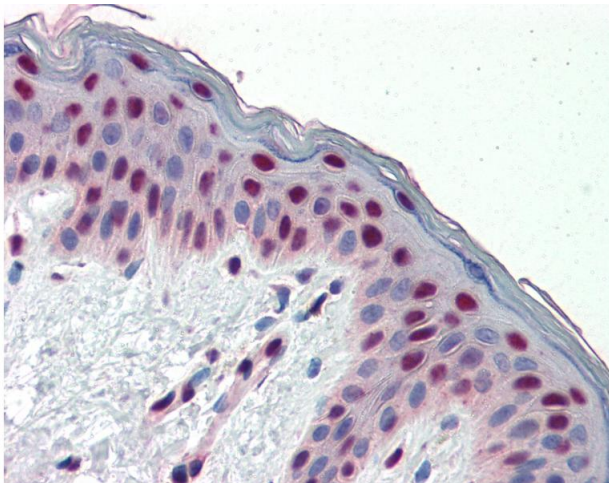
Handling Advice:	Avoid repeat freeze-thaw cycles.
Storage:	4 °C,-20 °C
Storage Comment:	Long term: -20°C, the use of 50% glycerol is recommended if storing aliquots in -20°C for long term use (up to 1 year) Short term (less than 1 week): 4°C. Avoid freeze-thaw cycles.

## Images



### Immunohistochemistry (Paraffin-embedded Sections)

**Image 1.** Human Skin (formalin-fixed, paraffin-embedded) stained with FOSL1 antibody ABIN462165 followed by biotinylated goat anti-rabbit IgG secondary antibody ABIN481713, alkaline phosphatase-streptavidin and chromogen.



### Immunohistochemistry

**Image 2.** Anti-FOSL1 / FRA1 antibody IHC of human skin. Immunohistochemistry of formalin-fixed, paraffin-embedded tissue after heat-induced antigen retrieval. Antibody concentration 5 ug/ml. This image was taken for the unconjugated form of this product. Othe ...