

Datasheet for ABIN462169
anti-GATA3 antibody (AA 36-85)

3 Images

[Go to Product page](#)

Overview

Quantity:	50 µg
Target:	GATA3
Binding Specificity:	AA 36-85
Reactivity:	Human, Mouse, Rat, Cow, Pig, Dog, Zebrafish (Danio rerio), Rabbit, Horse, Chicken, Sheep, Monkey, Hamster
Host:	Rabbit
Clonality:	Polyclonal
Conjugate:	This GATA3 antibody is un-conjugated
Application:	Western Blotting (WB), Immunohistochemistry (IHC), Immunohistochemistry (Paraffin-embedded Sections) (IHC (p))

Product Details

Brand:	IHC-plus™
Immunogen:	Synthetic peptide located between aa36-85 of human GATA3 (P23771, NP_002042). Percent identity by BLAST analysis: Human, Chimpanzee, Gorilla, Gibbon, Monkey, Galago, Mouse, Rat, Sheep, Hamster, Elephant, Dog, Bovine, Rabbit, Horse, Pig, Opossum, Zebra finch, Chicken (100%), Bat, Guinea pig, Trout, Salmon (92%), Zebrafish (84%). Type of Immunogen: Synthetic peptide
Isotype:	IgG
Specificity:	Human GATA3

Product Details

Predicted Reactivity: Percent identity by BLAST analysis: Human, Mouse, Rat, Sheep, Dog, Bovine, Rabbit, Horse, Pig, Chicken (100%) Guinea pig (92%) Zebrafish (84%).

Purification: Immunoaffinity purified

Target Details

Target: GATA3

Alternative Name: GATA3 ([GATA3 Products](#))

Background: Name/Gene ID: GATA3
Family: Transcription factor

Synonyms: GATA3, GATA-binding factor 3, HDRS, GATA binding protein 3, GATA-binding protein 3, HDR

Gene ID: 2625

NCBI Accession: [NP_002042](#)

UniProt: [P23771](#)

Pathways: [Hormone Transport](#), [Regulation of Hormone Metabolic Process](#), [Tube Formation](#)

Application Details

Application Notes: Approved: IHC, IHC-P (5 µg/mL), WB (0.2 - 1 µg/mL)

Usage: Immunohistochemistry: This antibody was validated for use in immunohistochemistry on a panel of 21 formalin-fixed, paraffin-embedded (FFPE) human tissues after heat induced antigen retrieval in pH 6.0 citrate buffer. After incubation with the primary antibody, slides were incubated with biotinylated secondary antibody, followed by alkaline phosphatase-streptavidin and chromogen. The stained slides were evaluated by a pathologist to confirm staining specificity. The optimal working concentration for this antibody was determined to be 5 µg/mL. Western Blot: Suggested dilution at 1 µg/mL in 5 % skim milk / PBS buffer, and HRP conjugated anti-Rabbit IgG should be diluted in 1:50000 - 100000 as second antibody. ELISA titer in peptide based assay: 1:1562500.

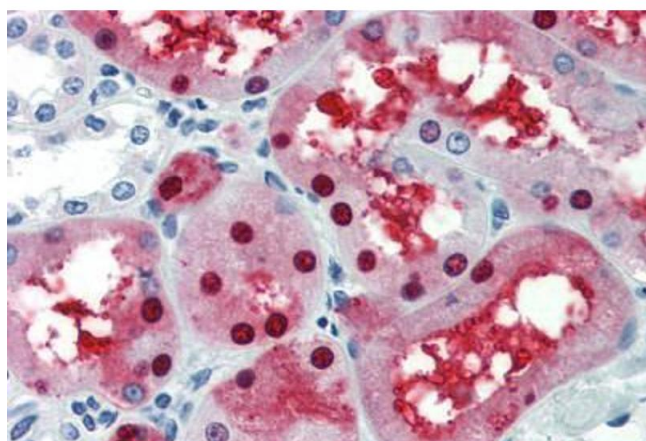
Comment: Target Species of Antibody: Human

Restrictions: For Research Use only

Handling

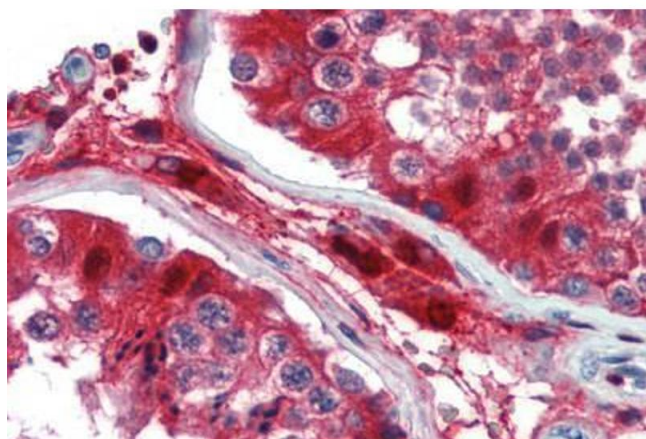
Format:	Lyophilized
Reconstitution:	Distilled water
Concentration:	Lot specific
Buffer:	Lyophilized from PBS with 2 % sucrose
Handling Advice:	Avoid repeat freeze-thaw cycles.
Storage:	4 °C,-20 °C
Storage Comment:	Long term: -20°C, the use of 50% glycerol is recommended if storing aliquots in -20°C for long term use (up to 1 year) Short term (less than 1 week): 4°C. Avoid freeze-thaw cycles.

Images



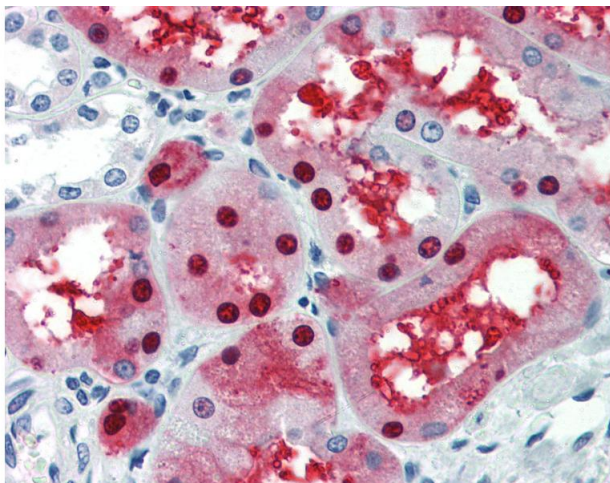
Immunohistochemistry (Paraffin-embedded Sections)

Image 1. Human Kidney (formalin-fixed, paraffin-embedded) stained with GATA3 antibody ABIN462169 followed by biotinylated goat anti-rabbit IgG secondary antibody ABIN481713, alkaline phosphatase-streptavidin and chromogen.



Immunohistochemistry (Paraffin-embedded Sections)

Image 2. Human Testis (formalin-fixed, paraffin-embedded) stained with GATA3 antibody ABIN462169 followed by biotinylated goat anti-rabbit IgG secondary antibody ABIN481713, alkaline phosphatase-streptavidin and chromogen.



Immunohistochemistry

Image 3. Anti-GATA3 antibody IHC of human kidney. Immunohistochemistry of formalin-fixed, paraffin-embedded tissue after heat-induced antigen retrieval. Antibody concentration 5 ug/ml. This image was taken for the unconjugated form of this product. Other for ...