

Datasheet for ABIN462170
anti-GATA6 antibody (C-Term)

4 Images

[Go to Product page](#)

Overview

Quantity:	50 µg
Target:	GATA6
Binding Specificity:	C-Term
Reactivity:	Human, Mouse, Rat, Cow, Guinea Pig, Horse, Bat, Monkey
Host:	Rabbit
Clonality:	Polyclonal
Conjugate:	This GATA6 antibody is un-conjugated
Application:	Western Blotting (WB), Immunohistochemistry (IHC), Immunohistochemistry (Paraffin-embedded Sections) (IHC (p))

Product Details

Brand:	IHC-plus™
Immunogen:	Synthetic peptide from C-Terminus of human GATA6 (Q92908, NP_005248). Percent identity by BLAST analysis: Human, Gorilla, Gibbon, Monkey, Galago, Marmoset, Elephant, Bat, Horse (100%), Sheep, Rabbit, Pig (92%), Rat, Panda, Bovine (85%), Guinea pig (84%), Mouse (78%). Type of Immunogen: Synthetic peptide
Isotype:	IgG
Specificity:	Human GATA6
Predicted Reactivity:	Percent identity by BLAST analysis: Human, Horse (100%) Sheep, Rabbit, Pig (92%) Rat, Bovine (85%) Guinea pig (84%).

Product Details

Purification: Immunoaffinity purified

Target Details

Target: GATA6

Alternative Name: GATA6 ([GATA6 Products](#))

Background: Name/Gene ID: GATA6

Synonyms: GATA6, GATA-binding factor 6, GATA-binding protein 6, GATA binding protein 6, Transcription factor GATA-6

Gene ID: 2627

NCBI Accession: [NP_005248](#)

UniProt: [Q92908](#)

Application Details

Application Notes: Approved: IHC, IHC-P (5 µg/mL), WB (0.2 - 1 µg/mL)

Usage: Immunohistochemistry: This antibody was validated for use in immunohistochemistry on a panel of 21 formalin-fixed, paraffin-embedded (FFPE) human tissues after heat induced antigen retrieval in pH 6.0 citrate buffer. After incubation with the primary antibody, slides were incubated with biotinylated secondary antibody, followed by alkaline phosphatase-streptavidin and chromogen. The stained slides were evaluated by a pathologist to confirm staining specificity. The optimal working concentration for this antibody was determined to be 5 µg/mL. Western Blot: Suggested dilution at 1 µg/mL in 5 % skim milk / PBS buffer, and HRP conjugated anti-Rabbit IgG should be diluted in 1:50000 - 100000 as second antibody. ELISA titer in peptide based assay: 1:312500.

Not recommended for: IF

Comment: Target Species of Antibody: Human

Restrictions: For Research Use only

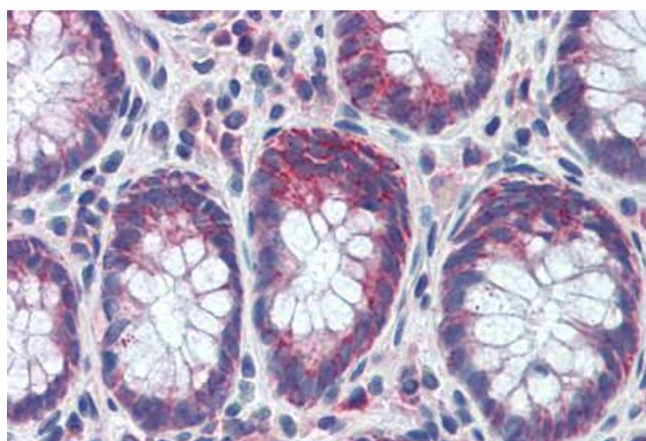
Handling

Format: Lyophilized

Handling

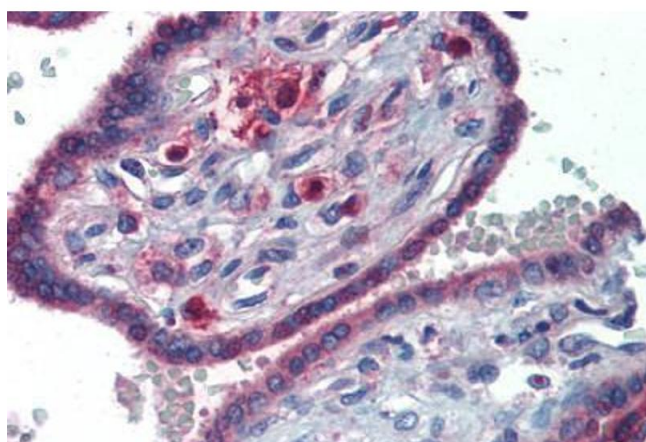
Reconstitution:	Distilled water
Concentration:	Lot specific
Buffer:	Lyophilized from PBS with 2 % sucrose
Handling Advice:	Avoid repeat freeze-thaw cycles.
Storage:	4 °C, -20 °C
Storage Comment:	Long term: -20°C, the use of 50% glycerol is recommended if storing aliquots in -20°C for long term use (up to 1 year) Short term (less than 1 week): 4°C. Avoid freeze-thaw cycles.

Images



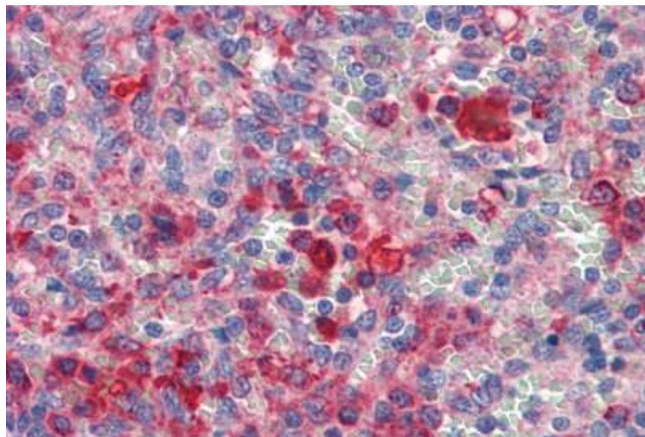
Immunohistochemistry (Paraffin-embedded Sections)

Image 1. Human Colon (formalin-fixed, paraffin-embedded) stained with GATA6 antibody ABIN462170 followed by biotinylated goat anti-rabbit IgG secondary antibody ABIN481713, alkaline phosphatase-streptavidin and chromogen.



Immunohistochemistry (Paraffin-embedded Sections)

Image 2. Human Placenta (formalin-fixed, paraffin-embedded) stained with GATA6 antibody ABIN462170 followed by biotinylated goat anti-rabbit IgG secondary antibody ABIN481713, alkaline phosphatase-streptavidin and chromogen.



Immunohistochemistry (Paraffin-embedded Sections)

Image 3. Human Spleen (formalin-fixed, paraffin-embedded) stained with GATA6 antibody ABIN462170 followed by biotinylated goat anti-rabbit IgG secondary antibody ABIN481713, alkaline phosphatase-streptavidin and chromogen.

Please check the [product details page](#) for more images. Overall 4 images are available for ABIN462170.