



[Go to Product page](#)

Datasheet for ABIN462174
anti-PAX4 antibody (AA 166-215)

4 Images

Overview

Quantity:	50 µg
Target:	PAX4
Binding Specificity:	AA 166-215
Reactivity:	Human
Host:	Rabbit
Clonality:	Polyclonal
Conjugate:	This PAX4 antibody is un-conjugated
Application:	Western Blotting (WB), Immunohistochemistry (IHC), Immunohistochemistry (Paraffin-embedded Sections) (IHC (p))

Product Details

Brand:	IHC-plus™
Immunogen:	Synthetic peptide located between aa166-215 of human PAX4 (A4D0Z1, NP_006184). Percent identity by BLAST analysis: Human, Chimpanzee, Gorilla, Baboon, Monkey (100%), Gibbon, Galago, Marmoset, Mouse, Rat, Elephant, Panda, Dog, Bovine, Bat, Rabbit, Horse, Pig, Guinea pig (92%). Type of Immunogen: Synthetic peptide
Isotype:	IgG
Specificity:	Human PAX4
Predicted Reactivity:	Percent identity by BLAST analysis: Human (100%) Mouse, Rat, Dog, Bovine, Rabbit, Pig (92%).

Product Details

Purification: Immunoaffinity purified

Target Details

Target: PAX4

Alternative Name: PAX4 ([PAX4 Products](#))

Background: Name/Gene ID: PAX4

Synonyms: PAX4, KPD, Paired box protein Pax-4, Paired domain gene 4, Paired box 4, Paired box gene 4, MODY9

Gene ID: 5078

NCBI Accession: [NP_006184](#)

UniProt: [O43316](#)

Application Details

Application Notes: Approved: IHC, IHC-P (5 µg/mL), WB (0.2 - 1 µg/mL)

Usage: Immunohistochemistry: This antibody was validated for use in immunohistochemistry on a panel of 21 formalin-fixed, paraffin-embedded (FFPE) human tissues after heat induced antigen retrieval in pH 6.0 citrate buffer. After incubation with the primary antibody, slides were incubated with biotinylated secondary antibody, followed by alkaline phosphatase-streptavidin and chromogen. The stained slides were evaluated by a pathologist to confirm staining specificity. The optimal working concentration for this antibody was determined to be 5 µg/mL.

Comment: Target Species of Antibody: Human

Restrictions: For Research Use only

Handling

Format: Lyophilized

Reconstitution: Distilled water

Concentration: Lot specific

Buffer: Lyophilized from PBS with 2 % sucrose

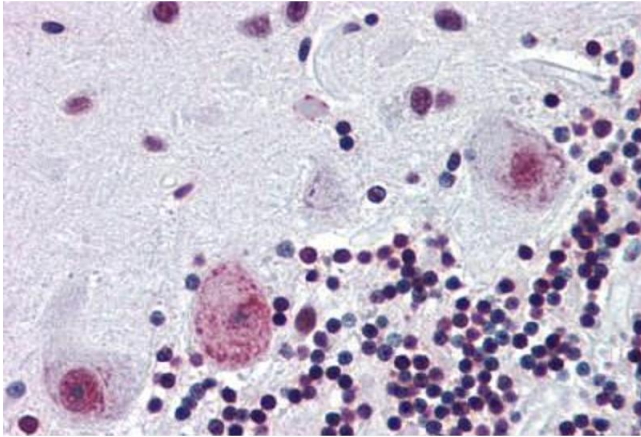
Handling Advice: Avoid repeat freeze-thaw cycles.

Handling

Storage: 4 °C, -20 °C

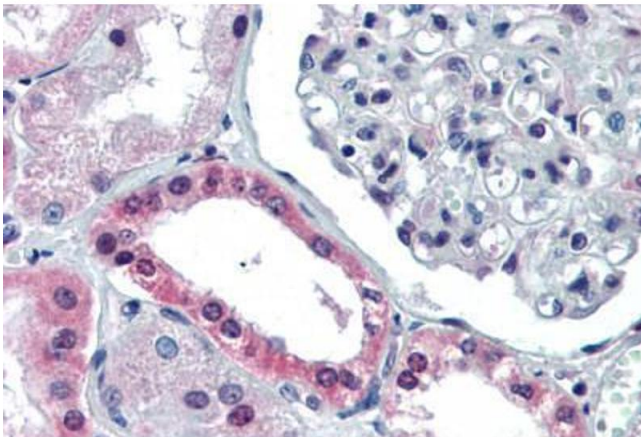
Storage Comment: Long term: -20°C, the use of 50% glycerol is recommended if storing aliquots in -20°C for long term use (up to 1 year)
Short term (less than 1 week): 4°C. Avoid freeze-thaw cycles.

Images



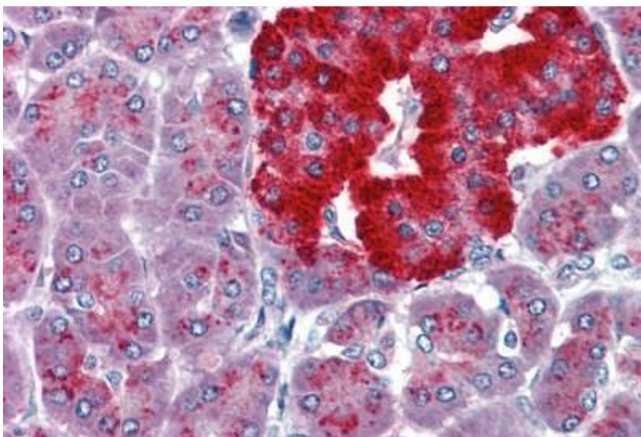
Immunohistochemistry (Paraffin-embedded Sections)

Image 1. Human Brain, Cerebellum (formalin-fixed, paraffin-embedded) stained with PAX4 antibody ABIN462174 followed by biotinylated goat anti-rabbit IgG secondary antibody ABIN481713, alkaline phosphatase-streptavidin and chromogen.



Immunohistochemistry (Paraffin-embedded Sections)

Image 2. Human Kidney (formalin-fixed, paraffin-embedded) stained with PAX4 antibody ABIN462174 followed by biotinylated goat anti-rabbit IgG secondary antibody ABIN481713, alkaline phosphatase-streptavidin and chromogen.



Immunohistochemistry (Paraffin-embedded Sections)

Image 3. Human Pancreas (formalin-fixed, paraffin-embedded) stained with PAX4 antibody ABIN462174 followed by biotinylated goat anti-rabbit IgG secondary antibody ABIN481713, alkaline phosphatase-streptavidin and chromogen.

Images

Please check the [product details page](#) for more images. Overall 4 images are available for ABIN462174.