

Datasheet for ABIN462176
anti-PAX7 antibody (AA 167-216)

4 Images

[Go to Product page](#)

Overview

Quantity:	50 µg
Target:	PAX7
Binding Specificity:	AA 167-216
Reactivity:	Human, Mouse, Rat, Chicken, Dog, Guinea Pig, Cow, Rabbit, Bat, Monkey
Host:	Rabbit
Clonality:	Polyclonal
Conjugate:	This PAX7 antibody is un-conjugated
Application:	Western Blotting (WB), Immunohistochemistry (IHC), Immunohistochemistry (Paraffin-embedded Sections) (IHC (p))

Product Details

Brand:	IHC-plus™
Immunogen:	Synthetic peptide located between aa167-216 of human PAX7 (P23759, NP_002575). Percent identity by BLAST analysis: Human, Chimpanzee, Gorilla, Orangutan, Gibbon, Monkey, Galago, Marmoset, Mouse, Rat, Elephant, Panda, Dog, Bovine, Bat, Rabbit, Guinea pig, Turkey, Zebra finch, Chicken (100%), Xenopus, Salmon, Zebrafish (92%). Type of Immunogen: Synthetic peptide
Isotype:	IgG
Specificity:	Human PAX7
Predicted Reactivity:	Percent identity by BLAST analysis: Human, Mouse, Rat, Dog, Bovine, Rabbit, Guinea pig,

Product Details

Chicken (100%) Xenopus, Zebrafish (92%).

Purification: Immunoaffinity purified

Target Details

Target: PAX7

Alternative Name: PAX7 ([PAX7 Products](#))

Background: Name/Gene ID: PAX7

Synonyms: PAX7, HUP1, Paired box 7, Paired box gene 7, Paired box homeotic gene 7, Paired box protein Pax-7, RMS2, Paired domain gene 7, PAX7 transcriptional factor, PAX7B

Gene ID: 5081

NCBI Accession: [NP_002575](#)

UniProt: [P23759](#)

Application Details

Application Notes: Approved: IHC, IHC-P (5 µg/mL), WB (0.05 µg/mL)

Usage: Immunohistochemistry: This antibody was validated for use in immunohistochemistry on a panel of 21 formalin-fixed, paraffin-embedded (FFPE) human tissues after heat induced antigen retrieval in pH 6.0 citrate buffer. After incubation with the primary antibody, slides were incubated with biotinylated secondary antibody, followed by alkaline phosphatase-streptavidin and chromogen. The stained slides were evaluated by a pathologist to confirm staining specificity. The optimal working concentration for this antibody was determined to be 5 µg/mL.

Comment: Target Species of Antibody: Human

Restrictions: For Research Use only

Handling

Format: Lyophilized

Reconstitution: Distilled water

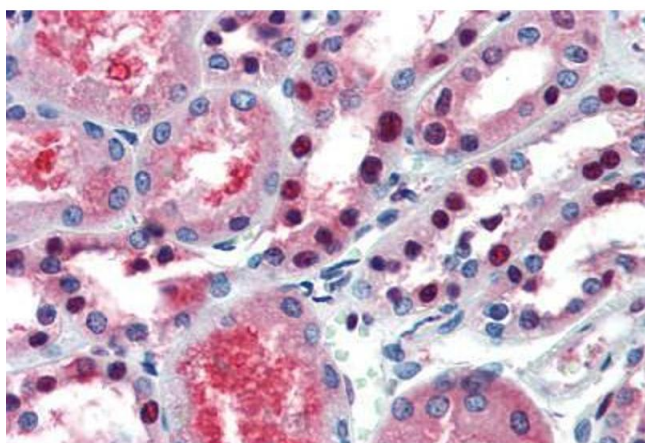
Concentration: Lot specific

Buffer: Lyophilized from PBS with 2 % sucrose

Handling

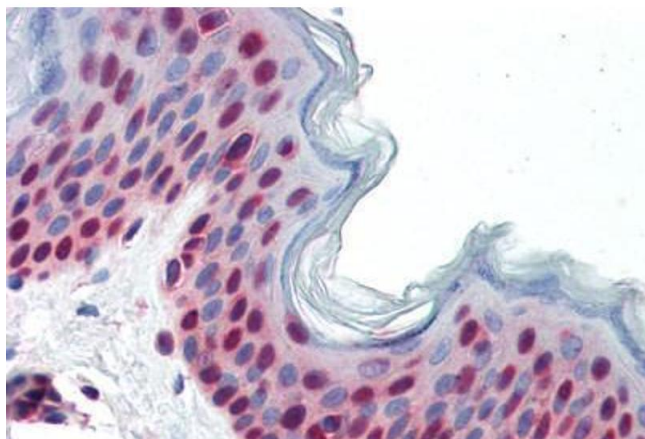
Handling Advice:	Avoid repeat freeze-thaw cycles.
Storage:	4 °C, -20 °C
Storage Comment:	Long term: -20°C, the use of 50% glycerol is recommended if storing aliquots in -20°C for long term use (up to 1 year) Short term (less than 1 week): 4°C. Avoid freeze-thaw cycles.

Images



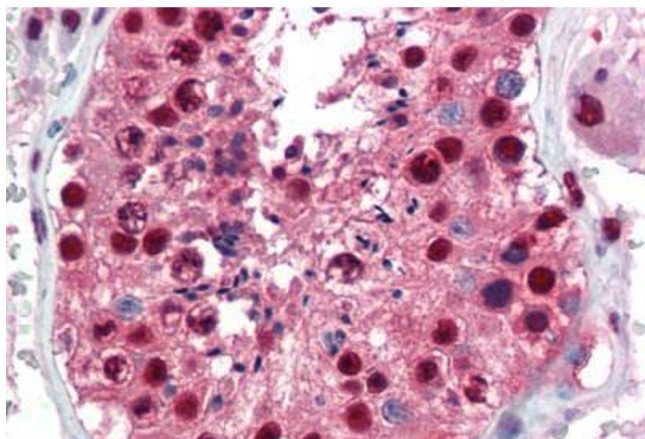
Immunohistochemistry (Paraffin-embedded Sections)

Image 1. Human Kidney (formalin-fixed, paraffin-embedded) stained with PAX7 antibody ABIN462176 followed by biotinylated goat anti-rabbit IgG secondary antibody ABIN481713, alkaline phosphatase-streptavidin and chromogen.



Immunohistochemistry (Paraffin-embedded Sections)

Image 2. Human Skin (formalin-fixed, paraffin-embedded) stained with PAX7 antibody ABIN462176 followed by biotinylated goat anti-rabbit IgG secondary antibody ABIN481713, alkaline phosphatase-streptavidin and chromogen.



Immunohistochemistry (Paraffin-embedded Sections)

Image 3. Human Testis (formalin-fixed, paraffin-embedded) stained with PAX7 antibody ABIN462176 followed by biotinylated goat anti-rabbit IgG secondary antibody ABIN481713, alkaline phosphatase-streptavidin and chromogen.

Please check the [product details page](#) for more images. Overall 4 images are available for ABIN462176.