

Datasheet for ABIN462190
anti-TCF21 antibody (AA 42-91)



[Go to Product page](#)

4 Images

Overview

Quantity:	50 µg
Target:	TCF21
Binding Specificity:	AA 42-91
Reactivity:	Human, Mouse, Rat, Dog, Rabbit, Cow, Guinea Pig, Horse, Bat, Hamster, Pig
Host:	Rabbit
Clonality:	Polyclonal
Conjugate:	This TCF21 antibody is un-conjugated
Application:	Western Blotting (WB), Immunohistochemistry (Paraffin-embedded Sections) (IHC (p)), Immunohistochemistry (IHC)

Product Details

Brand:	IHC-plus™
Immunogen:	Synthetic peptide located between aa42-91 of human TCF21 (O43680, NP_003197). Percent identity by BLAST analysis: Human, Chimpanzee, Gorilla, Monkey, Galago, Mouse, Rat, Hamster, Elephant, Panda, Dog, Bovine, Bat, Rabbit, Horse, Pig, Guinea pig (100%), Gibbon, Marmoset (92%), Opossum, Turkey, Zebra finch, Chicken, Platypus (85%). Type of Immunogen: Synthetic peptide
Isotype:	IgG
Specificity:	Human TCF21
Predicted Reactivity:	Percent identity by BLAST analysis: Human, Mouse, Rat, Dog, Bovine, Pig (100%) Chicken (85%).

Product Details

Purification: Immunoaffinity purified

Target Details

Target: TCF21

Alternative Name: TCF21 / Epicardin ([TCF21 Products](#))

Background: Name/Gene ID: TCF21
Family: Transcription factor

Synonyms: TCF21, Capsulin, BHLHa23, Epicardin, Pod-1, Transcription factor 21, TCF-21, POD1, Podocyte-expressed 1

Gene ID: 6943

NCBI Accession: [NP_003197](#)

UniProt: [O43680](#)

Pathways: [Intracellular Steroid Hormone Receptor Signaling Pathway](#), [Regulation of Intracellular Steroid Hormone Receptor Signaling](#)

Application Details

Application Notes: Approved: IHC, IHC-P (5 µg/mL), WB (0.2 - 1 µg/mL)

Usage: Immunohistochemistry: This antibody was validated for use in immunohistochemistry on a panel of 21 formalin-fixed, paraffin-embedded (FFPE) human tissues after heat induced antigen retrieval in pH 6.0 citrate buffer. After incubation with the primary antibody, slides were incubated with biotinylated secondary antibody, followed by alkaline phosphatase-streptavidin and chromogen. The stained slides were evaluated by a pathologist to confirm staining specificity. The optimal working concentration for this antibody was determined to be 5 µg/mL.

Comment: Target Species of Antibody: Human

Restrictions: For Research Use only

Handling

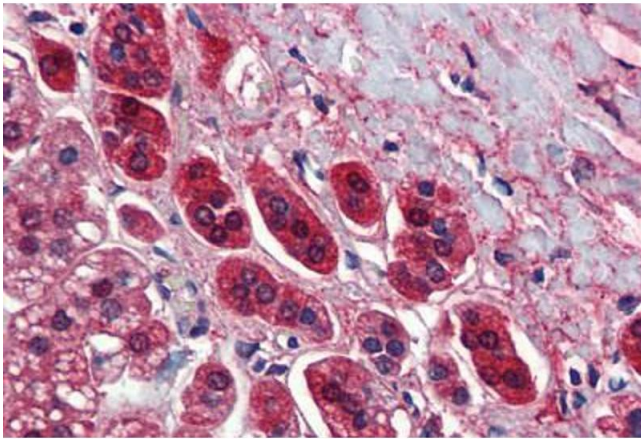
Format: Lyophilized

Reconstitution: Distilled water

Handling

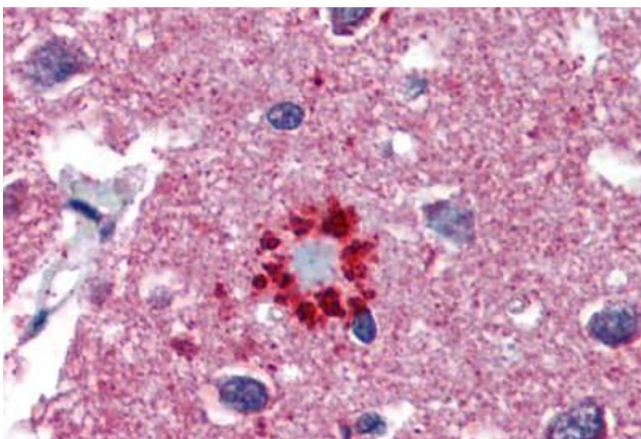
Concentration:	Lot specific
Buffer:	Lyophilized from PBS with 2 % sucrose
Handling Advice:	Avoid repeat freeze-thaw cycles.
Storage:	4 °C,-20 °C
Storage Comment:	Long term: -20°C, the use of 50% glycerol is recommended if storing aliquots in -20°C for long term use (up to 1 year) Short term (less than 1 week): 4°C. Avoid freeze-thaw cycles.

Images



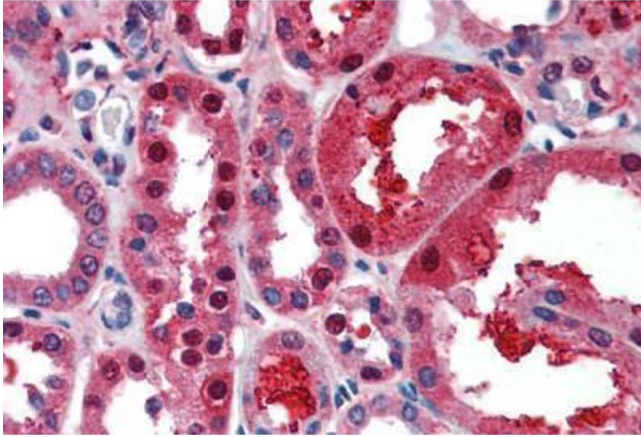
Immunohistochemistry (Paraffin-embedded Sections)

Image 1. Human Adrenal (formalin-fixed, paraffin-embedded) stained with TCF21 antibody ABIN462190 followed by biotinylated goat anti-rabbit IgG secondary antibody ABIN481713, alkaline phosphatase-streptavidin and chromogen.



Immunohistochemistry (Paraffin-embedded Sections)

Image 2. Human Brain, Cortex, Senile Plaque (formalin-fixed, paraffin-embedded) stained with TCF21 antibody ABIN462190 followed by biotinylated goat anti-rabbit IgG secondary antibody ABIN481713, alkaline phosphatase-streptavidin and chromogen.



Immunohistochemistry (Paraffin-embedded Sections)

Image 3. Human Kidney (formalin-fixed, paraffin-embedded) stained with TCF21 antibody ABIN462190 followed by biotinylated goat anti-rabbit IgG secondary antibody ABIN481713, alkaline phosphatase-streptavidin and chromogen.

Please check the [product details page](#) for more images. Overall 4 images are available for ABIN462190.