



[Go to Product page](#)

Datasheet for ABIN462200

anti-SSX4 antibody (AA 108-157)

3 Images

Overview

Quantity:	50 µg
Target:	SSX4
Binding Specificity:	AA 108-157
Reactivity:	Human
Host:	Rabbit
Clonality:	Polyclonal
Conjugate:	This SSX4 antibody is un-conjugated
Application:	Western Blotting (WB), Immunohistochemistry (IHC), Immunohistochemistry (Paraffin-embedded Sections) (IHC (p))

Product Details

Brand:	IHC-plus™
Immunogen:	Synthetic peptide located between aa108-157 of human SSX4 (O60224, NP_005627). Percent identity by BLAST analysis: Human, Chimpanzee, Gorilla (100%), Monkey (85%), Gibbon (80%). Type of Immunogen: Synthetic peptide
Isotype:	IgG
Specificity:	Human SSX4
Predicted Reactivity:	Percent identity by BLAST analysis: Human (100%).
Purification:	Immunoaffinity purified

Target Details

Target:	SSX4
Alternative Name:	SSX4 (SSX4 Products)
Background:	Name/Gene ID: SSX4 Synonyms: SSX4, CT5.4, Cancer/testis antigen 5.4, Protein SSX4, SSX4A, SSX4B
Gene ID:	6759
NCBI Accession:	NP_005627

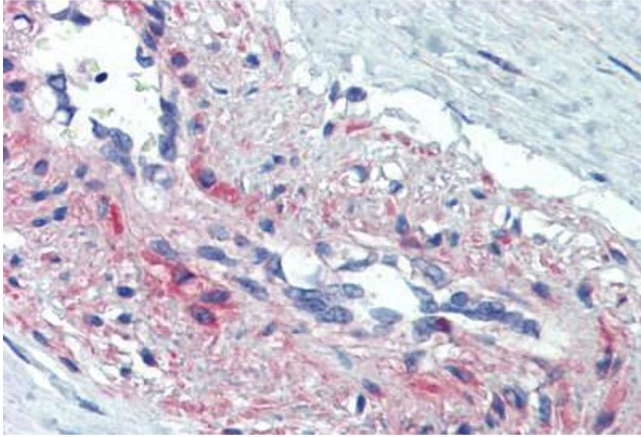
Application Details

Application Notes:	Approved: IHC, IHC-P (5 µg/mL), WB (0.2 - 1 µg/mL) Usage: Immunohistochemistry: This antibody was validated for use in immunohistochemistry on a panel of 21 formalin-fixed, paraffin-embedded (FFPE) human tissues after heat induced antigen retrieval in pH 6.0 citrate buffer. After incubation with the primary antibody, slides were incubated with biotinylated secondary antibody, followed by alkaline phosphatase-streptavidin and chromogen. The stained slides were evaluated by a pathologist to confirm staining specificity. The optimal working concentration for this antibody was determined to be 5 µg/mL. Western Blot: Suggested dilution at 1 µg/mL in 5 % skim milk / PBS buffer, and HRP conjugated anti-Rabbit IgG should be diluted in 1:50000 - 100000 as second antibody. ELISA titer in peptide based assay: 1:312500.
Comment:	Target Species of Antibody: Human
Restrictions:	For Research Use only

Handling

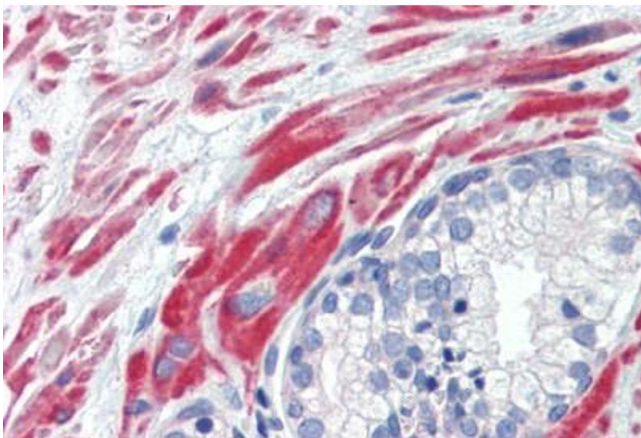
Format:	Lyophilized
Reconstitution:	Distilled water
Concentration:	Lot specific
Buffer:	Lyophilized from PBS with 2 % sucrose
Storage:	4 °C,-20 °C
Storage Comment:	Long term: -20°C, the use of 50% glycerol is recommended if storing aliquots in -20°C for long term use (up to 1 year)

Short term (less than 1 week): 4°C. Avoid freeze-thaw cycles.



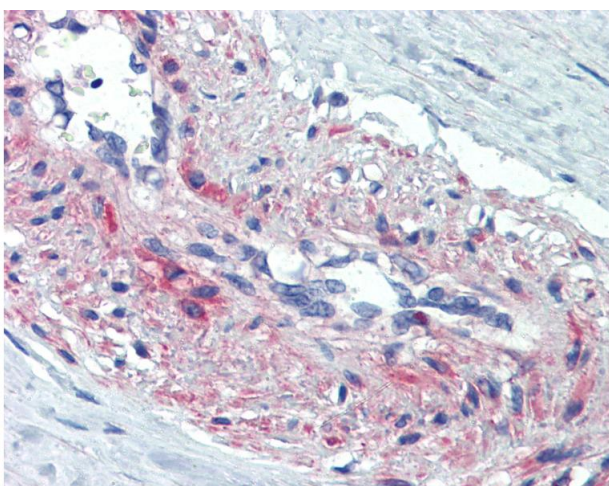
Immunohistochemistry (Paraffin-embedded Sections)

Image 1. Human Vessel, Smooth Muscle (formalin-fixed, paraffin-embedded) stained with SSX4 antibody ABIN462200 followed by biotinylated goat anti-rabbit IgG secondary antibody ABIN481713, alkaline phosphatase-streptavidin and chromogen.



Immunohistochemistry (Paraffin-embedded Sections)

Image 2. Human Prostate (formalin-fixed, paraffin-embedded) stained with SSX4 antibody ABIN462200 followed by biotinylated goat anti-rabbit IgG secondary antibody ABIN481713, alkaline phosphatase-streptavidin and chromogen.



Immunohistochemistry

Image 3. Anti-SSX4 antibody IHC of human vessel, smooth muscle. Immunohistochemistry of formalin-fixed, paraffin-embedded tissue after heat-induced antigen retrieval. Antibody concentration 5 ug/ml. This image was taken for the unconjugated form of this prod ...