

Datasheet for ABIN462203
anti-ATF4 antibody (N-Term)

4 Images

[Go to Product page](#)

Overview

Quantity:	50 µg
Target:	ATF4
Binding Specificity:	N-Term
Reactivity:	Human, Mouse
Host:	Rabbit
Clonality:	Polyclonal
Conjugate:	This ATF4 antibody is un-conjugated
Application:	Western Blotting (WB), Immunohistochemistry (IHC), Immunohistochemistry (Paraffin-embedded Sections) (IHC (p))

Product Details

Brand:	IHC-plus™
Immunogen:	Synthetic peptide from N-Terminus of mouse ATF4 (Q61328, NP_033846). Percent identity by BLAST analysis: Mouse (100%). Type of Immunogen: Synthetic peptide
Isotype:	IgG
Specificity:	Mouse ATF4
Predicted Reactivity:	Percent identity by BLAST analysis: Mouse (100%).
Purification:	Immunoaffinity purified

Target Details

Target:	ATF4
Alternative Name:	ATF4 (ATF4 Products)
Background:	Name/Gene ID: ATF4 Family: Transcription factor Synonyms: ATF4, CREB-2, CREB2, TXREB, DNA-binding protein TAXREB67, TAXREB67
Gene ID:	468
NCBI Accession:	NP_033846
UniProt:	P18848
Pathways:	Thyroid Hormone Synthesis , Myometrial Relaxation and Contraction , ER-Nucleus Signaling , Unfolded Protein Response

Application Details

Application Notes:	Approved: IHC, IHC-P (5 µg/mL), WB Usage: Immunohistochemistry: This antibody was validated for use in immunohistochemistry on a panel of 21 formalin-fixed, paraffin-embedded (FFPE) human tissues after heat induced antigen retrieval in pH 6.0 citrate buffer. After incubation with the primary antibody, slides were incubated with biotinylated secondary antibody, followed by alkaline phosphatase-streptavidin and chromogen. The stained slides were evaluated by a pathologist to confirm staining specificity. The optimal working concentration for this antibody was determined to be 5 µg/mL.
Comment:	Target Species of Antibody: Mouse
Restrictions:	For Research Use only

Handling

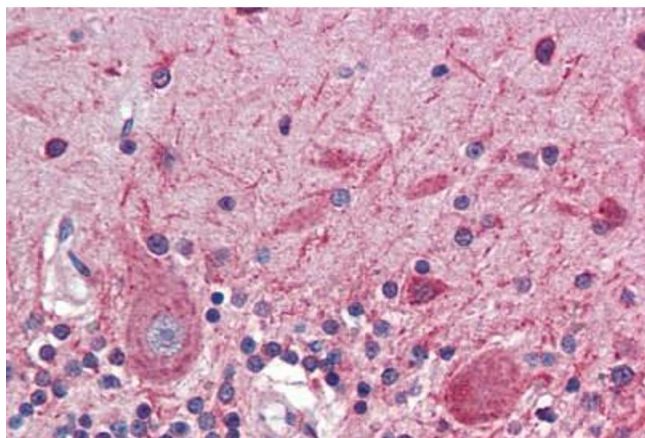
Format:	Lyophilized
Reconstitution:	Distilled water
Concentration:	Lot specific
Buffer:	Lyophilized from PBS with 2 % sucrose
Handling Advice:	Avoid repeat freeze-thaw cycles.

Handling

Storage: 4 °C, -20 °C

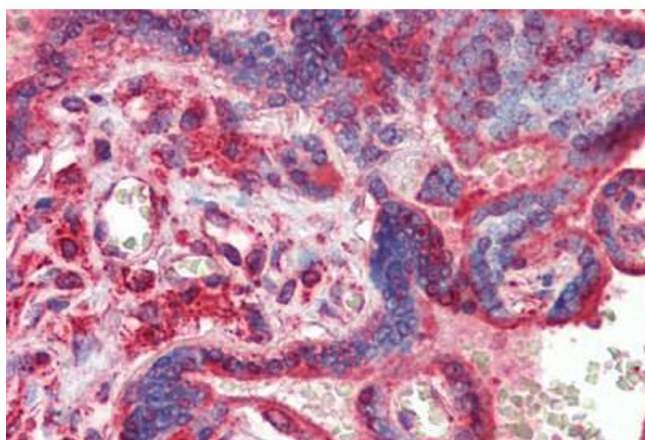
Storage Comment: Long term: -20°C, the use of 50% glycerol is recommended if storing aliquots in -20°C for long term use (up to 1 year)
Short term (less than 1 week): 4°C. Avoid freeze-thaw cycles.

Images



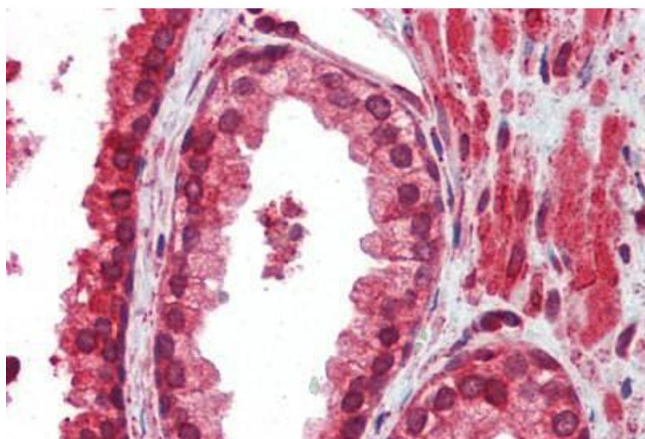
Immunohistochemistry (Paraffin-embedded Sections)

Image 1. Human Brain, Cerebellum (formalin-fixed, paraffin-embedded) stained with ATF4 antibody ABIN462203 followed by biotinylated goat anti-rabbit IgG secondary antibody ABIN481713, alkaline phosphatase-streptavidin and chromogen.



Immunohistochemistry (Paraffin-embedded Sections)

Image 2. Human Placenta (formalin-fixed, paraffin-embedded) stained with ATF4 antibody ABIN462203 followed by biotinylated goat anti-rabbit IgG secondary antibody ABIN481713, alkaline phosphatase-streptavidin and chromogen.



Immunohistochemistry (Paraffin-embedded Sections)

Image 3. Human Prostate (formalin-fixed, paraffin-embedded) stained with ATF4 antibody ABIN462203 followed by biotinylated goat anti-rabbit IgG secondary antibody ABIN481713, alkaline phosphatase-streptavidin and chromogen.

Images

Please check the [product details page](#) for more images. Overall 4 images are available for ABIN462203.