

Datasheet for ABIN462212
anti-NR1H3 antibody (C-Term)

4 Images

[Go to Product page](#)

Overview

Quantity:	50 µg
Target:	NR1H3
Binding Specificity:	C-Term
Reactivity:	Human, Mouse, Rat, Cow, Xenopus laevis, Dog, Goat, Horse, Rabbit, Pig, Guinea Pig, Zebrafish (Danio rerio), Monkey, Bat, Chicken, Hamster
Host:	Rabbit
Clonality:	Polyclonal
Conjugate:	This NR1H3 antibody is un-conjugated
Application:	Western Blotting (WB), Immunohistochemistry (IHC), Immunohistochemistry (Paraffin-embedded Sections) (IHC (p))

Product Details

Brand:	IHC-plus™
Immunogen:	Synthetic peptide from C-Terminus of human NR1H3 (Q13133, NP_005684). Percent identity by BLAST analysis: Human, Chimpanzee, Gorilla, Orangutan, Gibbon, Monkey, Galago, Marmoset, Mouse, Rat, Goat, Hamster, Elephant, Panda, Dog, Bovine, Bat, Rabbit, Horse, Pig, Guinea pig, Turkey, Zebra finch, Chicken, Platypus, Lizard, Xenopus, Trout, Salmon, Stickleback, Zebrafish (100%). Type of Immunogen: Synthetic peptide
Isotype:	IgG

Product Details

Specificity:	Human NR1H3 / LXR Alpha
Predicted Reactivity:	Percent identity by BLAST analysis: Human, Mouse, Rat, Dog, Bovine, Goat, Pig, Guinea pig, Chicken, Zebrafish (100%).
Purification:	Immunoaffinity purified

Target Details

Target:	NR1H3
Alternative Name:	NR1H3 / LXR Alpha (NR1H3 Products)
Background:	<p>Name/Gene ID: NR1H3</p> <p>Subfamily: NR1 Thyroid hormone-like</p> <p>Family: NHR</p> <p>Synonyms: NR1H3, Liver X receptor alpha, LXRA, LXR-a, Oxysterols receptor LXR-alpha, LXR alpha, Lxralpha, RLD-1</p>
Gene ID:	10062
NCBI Accession:	NP_005684
UniProt:	Q13133
Pathways:	Nuclear Receptor Transcription Pathway , Steroid Hormone Mediated Signaling Pathway , Nuclear Hormone Receptor Binding , Cellular Response to Molecule of Bacterial Origin , Hepatitis C

Application Details

Application Notes:	<p>Approved: IHC, IHC-P (5 µg/mL), WB</p> <p>Usage: Immunohistochemistry: This antibody was validated for use in immunohistochemistry on a panel of 21 formalin-fixed, paraffin-embedded (FFPE) human tissues after heat induced antigen retrieval in pH 6.0 citrate buffer. After incubation with the primary antibody, slides were incubated with biotinylated secondary antibody, followed by alkaline phosphatase-streptavidin and chromogen. The stained slides were evaluated by a pathologist to confirm staining specificity. The optimal working concentration for this antibody was determined to be 5 µg/mL. ELISA titer using peptide based assay: 1:62500. Western Blot: Suggested dilution at 1 µg/mL in 5 % skim milk / PBS buffer, and HRP conjugated anti-Rabbit IgG should be diluted in 1:50000 -</p>
--------------------	--

Application Details

100000 as second antibody.

Comment: Target Species of Antibody: Human

Restrictions: For Research Use only

Handling

Format: Lyophilized

Reconstitution: Distilled water

Concentration: Lot specific

Buffer: Lyophilized from PBS with 2 % sucrose

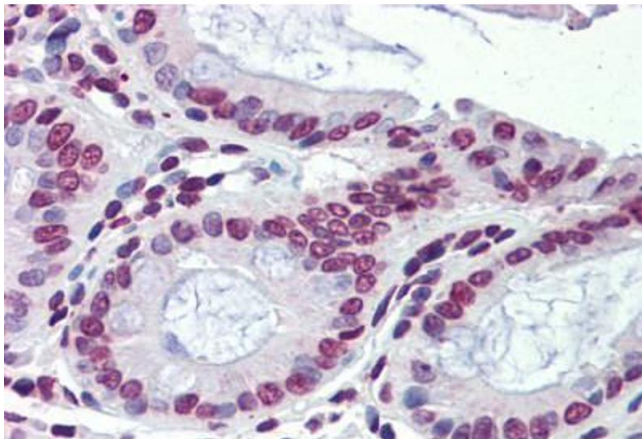
Handling Advice: Avoid repeat freeze-thaw cycles.

Storage: 4 °C, -20 °C

Storage Comment: Long term: -20°C, the use of 50% glycerol is recommended if storing aliquots in -20°C for long term use (up to 1 year)

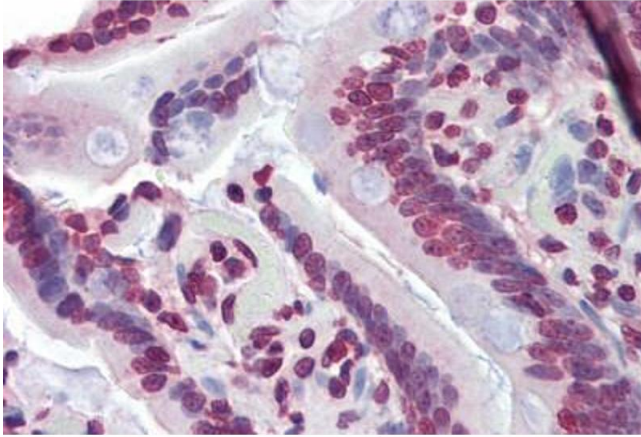
Short term (less than 1 week): 4°C. Avoid freeze-thaw cycles.

Images



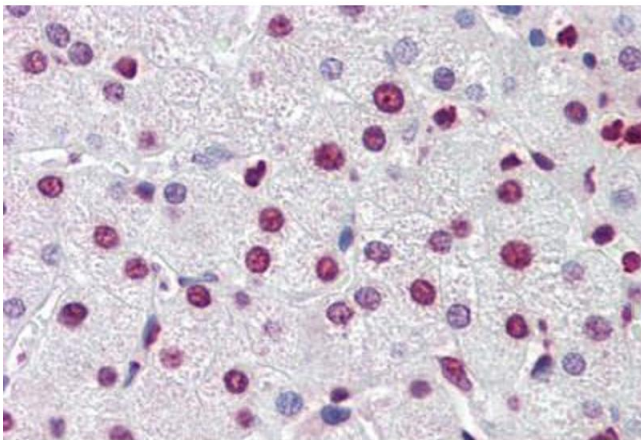
Immunohistochemistry (Paraffin-embedded Sections)

Image 1. Human Colon (formalin-fixed, paraffin-embedded) stained with NR1H3 antibody ABIN462212 followed by biotinylated goat anti-rabbit IgG secondary antibody ABIN481713, alkaline phosphatase-streptavidin and chromogen.



Immunohistochemistry (Paraffin-embedded Sections)

Image 2. Human Small Intestine (formalin-fixed, paraffin-embedded) stained with NR1H3 antibody ABIN462212 followed by biotinylated goat anti-rabbit IgG secondary antibody ABIN481713, alkaline phosphatase-streptavidin and chromogen.



Immunohistochemistry (Paraffin-embedded Sections)

Image 3. Human Liver (formalin-fixed, paraffin-embedded) stained with NR1H3 antibody ABIN462212 followed by biotinylated goat anti-rabbit IgG secondary antibody ABIN481713, alkaline phosphatase-streptavidin and chromogen.

Please check the [product details page](#) for more images. Overall 4 images are available for ABIN462212.