

Datasheet for ABIN462213  
**anti-LDOC1 antibody (N-Term)**

## 4 Images

[Go to Product page](#)

## Overview

Quantity:	50 µg
Target:	LDOC1
Binding Specificity:	N-Term
Reactivity:	Human, Cow, Rabbit, Dog, Guinea Pig, Pig
Host:	Rabbit
Clonality:	Polyclonal
Conjugate:	This LDOC1 antibody is un-conjugated
Application:	Immunohistochemistry (IHC), Western Blotting (WB), Immunohistochemistry (Paraffin-embedded Sections) (IHC (p))

## Product Details

Brand:	IHC-plus™
Immunogen:	Synthetic peptide from N-Terminus of human LDOC1 (O95751, NP_036449). Percent identity by BLAST analysis: Human, Chimpanzee, Gorilla, Gibbon, Galago, Marmoset, Panda, Bovine, Rabbit, Pig, Guinea pig (100%), Monkey, Bat, Horse (92%), Dog (85%).  Type of Immunogen: Synthetic peptide
Isotype:	IgG
Specificity:	Human LDOC1
Predicted Reactivity:	Percent identity by BLAST analysis: Human, Bovine, Rabbit, Pig, Guinea pig (100%) Dog (85%).
Purification:	Immunoaffinity purified

## Target Details

Target:	LDOC1
Alternative Name:	LDOC1 ( <a href="#">LDOC1 Products</a> )
Background:	Name/Gene ID: LDOC1  Synonyms: LDOC1, Breast cancer, up-regulated 1, Mart7, BCUR1, Mar7, Protein LDOC1
Gene ID:	23641
NCBI Accession:	<a href="#">NP_036449</a>
UniProt:	<a href="#">O95751</a>

## Application Details

Application Notes:	Approved: IHC, IHC-P (5 µg/mL), WB (0.2 - 1 µg/mL)  Usage: Immunohistochemistry: This antibody was validated for use in immunohistochemistry on a panel of 21 formalin-fixed, paraffin-embedded (FFPE) human tissues after heat induced antigen retrieval in pH 6.0 citrate buffer. After incubation with the primary antibody, slides were incubated with biotinylated secondary antibody, followed by alkaline phosphatase-streptavidin and chromogen. The stained slides were evaluated by a pathologist to confirm staining specificity. The optimal working concentration for this antibody was determined to be 5 µg/mL. Western Blot: Suggested dilution at 1 µg/mL in 5 % skim milk / PBS buffer, and HRP conjugated anti-Rabbit IgG should be diluted in 1:50000 - 100000 as second antibody. ELISA titer in peptide based assay: 1:12500.
Comment:	Target Species of Antibody: Human
Restrictions:	For Research Use only

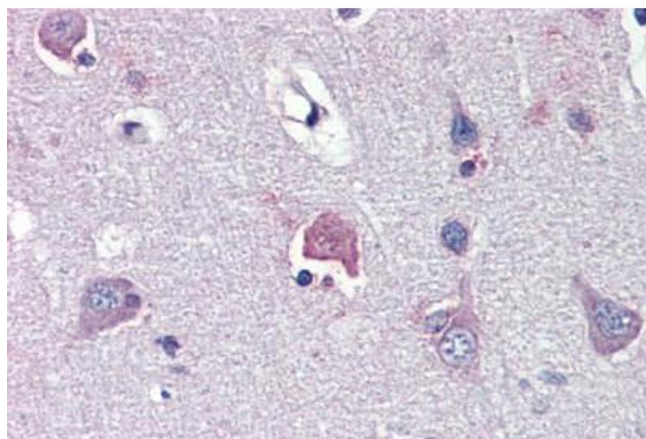
## Handling

Format:	Lyophilized
Reconstitution:	Reconstitute with 50 µL sterile ddH2O.
Concentration:	Lot specific
Buffer:	Lyophilized from PBS with 2 % sucrose
Handling Advice:	Avoid repeat freeze-thaw cycles.
Storage:	4 °C, -20 °C

## Handling

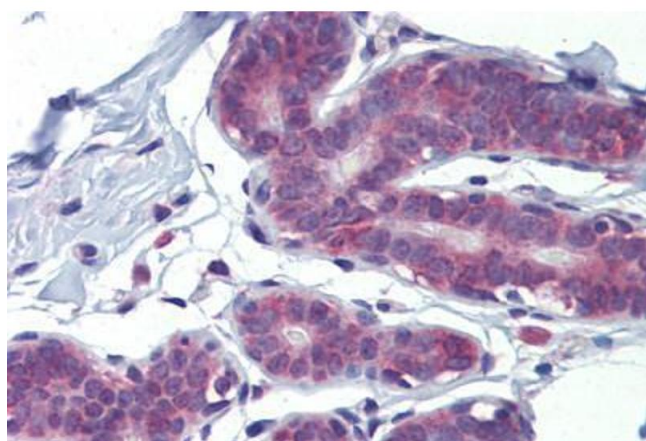
Storage Comment: Long term: -20°C, the use of 50% glycerol is recommended if storing aliquots in -20°C for long term use (up to 1 year)  
Short term (less than 1 week): 4°C. Avoid freeze-thaw cycles.

## Images



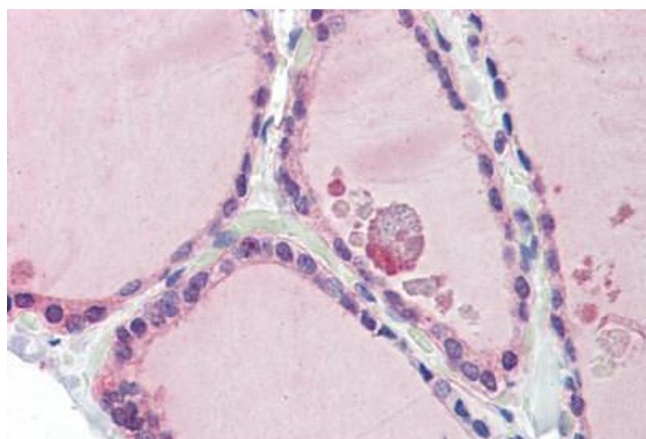
### Immunohistochemistry (Paraffin-embedded Sections)

**Image 1.** Human Brain, Cortex (formalin-fixed, paraffin-embedded) stained with LDOC1 antibody ABIN462213 followed by biotinylated goat anti-rabbit IgG secondary antibody ABIN481713, alkaline phosphatase-streptavidin and chromogen.



### Immunohistochemistry (Paraffin-embedded Sections)

**Image 2.** Human Breast (formalin-fixed, paraffin-embedded) stained with LDOC1 antibody ABIN462213 followed by biotinylated goat anti-rabbit IgG secondary antibody ABIN481713, alkaline phosphatase-streptavidin and chromogen.



### Immunohistochemistry (Paraffin-embedded Sections)

**Image 3.** Human Thyroid (formalin-fixed, paraffin-embedded) stained with LDOC1 antibody ABIN462213 followed by biotinylated goat anti-rabbit IgG secondary antibody ABIN481713, alkaline phosphatase-streptavidin and chromogen.

Please check the [product details page](#) for more images. Overall 4 images are available for ABIN462213.